

## Central Lancashire Online Knowledge (CLoK)

Title	Galaxy And Mass Assembly (GAMA): trends in galaxy colours, morphology, and stellar populations with large-scale structure, group, and pair environments
Type	Article
URL	<a href="https://clock.uclan.ac.uk/15125/">https://clock.uclan.ac.uk/15125/</a>
DOI	<a href="https://doi.org/10.1093/mnras/stv1176">https://doi.org/10.1093/mnras/stv1176</a>
Date	2015
Citation	Alpaslan, M, Driver, S, Robotham, ASG, Obreschkow, D, Andrae, E, Cluver, M, Kelvin, LS, Lange, R, Owers, M et al (2015) Galaxy And Mass Assembly (GAMA): trends in galaxy colours, morphology, and stellar populations with large-scale structure, group, and pair environments. Monthly Notices of the Royal Astronomical Society, 451 (3). pp. 3249-3268. ISSN 0035-8711
Creators	Alpaslan, M, Driver, S, Robotham, ASG, Obreschkow, D, Andrae, E, Cluver, M, Kelvin, LS, Lange, R, Owers, M, Taylor, EN and et al.

It is advisable to refer to the publisher's version if you intend to cite from the work.  
<https://doi.org/10.1093/mnras/stv1176>

For information about Research at UCLan please go to <http://www.uclan.ac.uk/research/>

All outputs in CLoK are protected by Intellectual Property Rights law, including Copyright law. Copyright, IPR and Moral Rights for the works on this site are retained by the individual authors and/or other copyright owners. Terms and conditions for use of this material are defined in the <http://clock.uclan.ac.uk/policies/>

# Galaxy And Mass Assembly (GAMA): trends in galaxy colours, morphology, and stellar populations with large-scale structure, group, and pair environments

Mehmet Alpaslan,<sup>1,2,3★</sup> Simon Driver,<sup>2,3</sup> Aaron S. G. Robotham,<sup>3</sup>  
 Danail Obreschkow,<sup>3</sup> Ellen Andrae,<sup>4</sup> Michelle Cluver,<sup>5</sup> Lee S. Kelvin,<sup>6</sup>  
 Rebecca Lange,<sup>3</sup> Matt Owers,<sup>7,8</sup> Edward N. Taylor,<sup>9</sup> Stephen K. Andrews,<sup>3</sup>  
 Steven Bamford,<sup>10</sup> Joss Bland-Hawthorn,<sup>11</sup> Sarah Brough,<sup>8</sup> Michael J. I. Brown,<sup>12</sup>  
 Matthew Colless,<sup>13</sup> Luke J. M. Davies,<sup>3</sup> Elizabeth Eardley,<sup>14</sup> Meiert W. Grootes,<sup>4</sup>  
 Andrew M. Hopkins,<sup>8</sup> Rebecca Kennedy,<sup>10</sup> Jochen Liske,<sup>15</sup> Maritza A. Lara-López,<sup>16</sup>  
 Ángel R. López-Sánchez,<sup>7,8</sup> Jon Loveday,<sup>17</sup> Barry F. Madore,<sup>18</sup> Smriti Mahajan,<sup>19</sup>  
 Martin Meyer,<sup>3</sup> Amanda Moffett,<sup>3</sup> Peder Norberg,<sup>20</sup> Samantha Penny,<sup>21</sup>  
 Kevin A. Pimbblet,<sup>12,22</sup> Cristina C. Popescu,<sup>23,24</sup> Mark Seibert<sup>18</sup> and Richard Tuffs<sup>4</sup>

*Affiliations are listed at the end of the paper*

Accepted 2015 May 18. Received 2015 May 18; in original form 2015 March 4

## ABSTRACT

We explore trends in galaxy properties with Mpc-scale structures using catalogues of environment and large-scale structure from the Galaxy And Mass Assembly (GAMA) survey. Existing GAMA catalogues of large-scale structure, group, and pair membership allow us to construct galaxy stellar mass functions for different environmental types. To avoid simply extracting the known underlying correlations between galaxy properties and stellar mass, we create a mass matched sample of galaxies with stellar masses within  $9.5 \leq \log M_*/h^{-2} M_\odot \leq 11$  for each environmental population. Using these samples, we show that mass normalized galaxies in different large-scale environments have similar energy outputs,  $u - r$  colours, luminosities, and morphologies. Extending our analysis to group and pair environments, we show that galaxies that are not in groups or pairs exhibit similar characteristics to each other regardless of broader environment. For our mass controlled sample, we fail to see a strong dependence of Sérsic index or galaxy luminosity on halo mass, but do find that it correlates very strongly with colour. Repeating our analysis for galaxies that have not been mass controlled introduces and amplifies trends in the properties of galaxies in pairs, groups, and large-scale structure, indicating that stellar mass is the most important predictor of the galaxy properties we examine, as opposed to environmental classifications.

**Key words:** galaxies: clusters: general – galaxies: evolution – galaxies: luminosity function, mass function – galaxies: stellar content – large-scale structure of Universe.

## 1 INTRODUCTION

No galaxy is an island. The close surroundings of a galaxy (i.e. within a few tens of Mpc) play an important role in shaping its evolution (e.g. Avila-Reese et al. 2005; Blanton et al. 2005; Hahn et al.

2007; Fakhouri & Ma 2009). Stellar populations are particularly sensitive to environment: the proximity of nearby or merging galaxies has been shown to trigger gas collapse within galaxies, which leads to an increased rate of star formation (Toomre & Toomre 1972; Quinn, Hernquist & Fullagar 1993; Lewis et al. 2002; Gomez et al. 2003; Porter et al. 2008). Other observational signatures of environmental effects include differences in colour (Kreckel et al. 2012), stellar mass (Chabrier 2003), morphology (Dressler 1980; Butcher

\* E-mail: [mehmet.alpaslan@nasa.gov](mailto:mehmet.alpaslan@nasa.gov)

& Oemler 1984; Dressler et al. 1997), the luminosity function (Croton et al. 2005; McNaught-Roberts et al. 2014), and disrupting the gas content of a galaxy (Benítez-Llambay et al. 2013; Beygu et al. 2013).

Beyond the close surroundings of a galaxy, there is also ample evidence to show that, for galaxies in a cluster, the cluster environment has some influence on its properties. Galaxies do appear to be more red in denser environments (e.g. Baldry et al. 2006; Bamford et al. 2009; Peng et al. 2010). On the other hand, star formation appears to be suppressed in galaxies that are infalling into clusters (Lewis et al. 2002; Balogh 2007), though more recent work by Brough et al. (2013) fails to detect significant trends in star formation rates with environment. Similarly, recent work by Wijesinghe et al. (2012) determines that star formation rates of morphologically classified galaxies depend, to first order, on stellar mass and not environment. Another well-known phenomenon is the tendency for galaxies in different group environments to have distinct luminosity functions (e.g. Norberg et al. 2002; DePropris et al. 2003; Croton et al. 2005; Zehavi et al. 2005, 2011; Robotham et al. 2006; Robotham, Phillipps & De Propris 2010b; Masaki, Lin & Yoshida 2013; Eardley et al. 2015; McNaught-Roberts et al. 2014).

Galaxies, however, do not just live amongst their immediate neighbours; instead, they are embedded within the complex large-scale structure of the Universe. This structure is characterized by long, linear filaments of galaxies that stretch between highly dense clusters containing a vast number of galaxies. In between filaments and clusters lie voids, which are largely empty regions of space that contain a mere handful of galaxies per unit volume. Does this so-called cosmic web have any noticeable impact on galaxies? In other words, is a galaxy in a filament distinctly and systematically different from that inside a void?

Research in understanding the cosmic web is actively ongoing. A number of algorithms and methods exist to detect and classify large-scale structure (e.g. Doroshkevich et al. 2004; Pimblet 2005; Colberg 2007; Forero-Romero et al. 2009; Murphy, Eke & Frenk 2011; Cautun, van de Weygaert & Jones 2012; Smith et al. 2012; Alpaslan et al. 2014a; Eardley et al. 2015). These algorithms primarily focus on using positional (and where possible, velocity) information in the distribution of galaxies to trace and identify not only filamentary structures, but also voids and clusters (often referred to as ‘knots’). These sophisticated algorithms, together with current-generation redshift surveys, make it possible to compare and correlate the properties of galaxies found in a range of environments.

The Galaxy and Mass Assembly (GAMA)<sup>1</sup> survey (Driver et al. 2009, 2011; Liske et al., in preparation) is a joint European-Australian project which combines multiwavelength photometric data from a large number of ground- and space-based programmes with a highly complete spectroscopic campaign conducted using the AAOmega spectrograph on the Anglo-Australian Telescope (AAT) at Siding Spring Observatory, Australia. At the time of writing, GAMA has access to data in the following bands (see Driver et al., in preparation): *Galaxy Evolution Explorer* (GALEX; FUV, NUV), Sloan Digital Sky Survey (SDSS; *ugriz*), UKIRT Infrared Deep Sky Survey (UKIDSS; *YJHK*), VISTA Kilo-degree Infrared Galaxy survey (VIKING; *ZYJHK*), *Wide-Field Infrared Survey Explorer* (WISE; *W1-4*; MIR), and *Herschel-ATLAS* (PACS, SPIRE; FIR) and Giant Metrewave Radio Telescope and shortly Australian Square Kilometre Array (SKA) Pathfinder (ASKAP; radio). The

spectroscopic component of the survey contains  $\sim 250\,000$  spectra for galaxies out to  $r = 19.8$  mag across five fields: centred at  $\alpha = 9^{\text{h}}$ ,  $\delta = 0.5$  deg (G09),  $\alpha = 12^{\text{h}}$ ,  $\delta = -0.5$  deg (G12),  $\alpha = 14^{\text{h}} 30^{\text{m}}$ ,  $\delta = 0.5$  deg (G15),  $\alpha = 2^{\text{h}}$ ,  $\delta = -8.125$  deg (G02), and  $\alpha = 23^{\text{h}}$  and  $\delta = -32.5$  deg (G23). The three equatorial fields (G09, G12, and G15) are  $12 \times 5$  deg each, and the two southern fields (G02 and G23) are, respectively,  $8.6 \times 2.5$  and  $12 \times 5$  deg.

One of the principal advantages of GAMA for studies of intergalactic structure is the high spectroscopic target density, which averages to 1050 galaxies per square degree, and a spectroscopic completeness of 98.42 per cent in the three equatorial fields, with associated velocity uncertainties of  $\sigma_v \approx 50$  km s<sup>-1</sup> (Liske et al. 2014). This is achieved via an observing strategy which revisits the same patch of sky, on average, 10.3 to 10.9 times (Liske et al., in preparation), with different fibre configurations on the 2dF instrument, in order to observe every possible target (Robotham et al. 2010a). These highly complete and dense data have led to the creation of the GAMA Galaxy Group Catalogue (G<sup>3</sup>C; Robotham et al. 2011) and the GAMA Large Scale Structure Catalogue (GLSSC; Alpaslan et al. 2014a), both of which will be discussed in greater detail in Section 2. These data sets allow us to tackle outstanding questions on galaxy evolution from an empirical perspective, and will help in placing robust constraints on how the large-scale structure of the Universe affects galaxy evolution, particularly morphology, colour, and stellar populations. Ultimately, a detailed study of the gas content will also be required, which is possible via projects such as the ASKAP DINGO survey (Meyer 2009).

In this work, we seek to make some initial advances into understanding to what extent (if at all) large-scale structure has an impact on the evolution of galaxies. Given the broadness of this topic, we choose to focus on a few, relatively well understood properties of galaxies: colour, brightness, morphological properties (Sérsic index, ellipticity, effective radius, and visually identified structure), gas metallicity, and total spectral energy density. For each of these properties, we seek to find any possible trends related to large-scale structure. In other words, do galaxies that exist in different types of large-scale structure inhabit different parts of the parameter space of galaxy properties? How do these trends compare to those of galaxies in groups or pairs?

In Section 2 we give further detail on the G<sup>3</sup>C and the GLSSC, as well as other GAMA catalogues of the various galaxy properties that were used in this investigation. In Section 3, we display galaxy stellar mass functions (GSMFs) for GAMA galaxies in different environments. Section 4 begins by defining a mass normalized sample of galaxies, which we then use to look for trends in galaxy properties within different types of environment. Finally, in Section 5 we briefly examine consequences of our mass normalization process and repeat our analysis for different mass ranges. In Section 6, we discuss these results and summarize them. Throughout this paper, consistent with the cosmology used in Robotham et al. (2011), Merson et al. (2013), and Alpaslan et al. (2014a), we adopt  $\Omega_m = 0.25$ ,  $\Omega_\Lambda = 0.75$ ,  $H_0 = 100$  h km s<sup>-1</sup> Mpc<sup>-1</sup>. All of the analysis in this work has been done using the R programming language (R Core Team 2014).

## 2 DATA

The large-scale catalogue we use is the GLSSC (FilamentFindingv01; Alpaslan et al. 2014a), an observationally motivated catalogue of large-scale structure. It classifies galaxies into the three equatorial GAMA fields as belonging to filaments or voids. The catalogue also introduces a third,

<sup>1</sup> <http://www.gama-survey.org/>

interstitial structure of galaxies dubbed ‘tendrils,’ which typically consist of delicate (but coherent) strings of 6–10 galaxies that emerge from filaments and terminate either in voids or in other filaments. Tendrils are discussed in greater detail in Alpaslan et al. (2014b). The catalogue contains 45 542 galaxies with  $M_r \leq -19.77 + 5 \log h$  mag across all three equatorial fields, each assigned to a filament, tendril, or void. The full sample of galaxies is volume limited to  $M_r \leq -19.77 + 5 \log h$  mag and extends out to  $z = 0.213$ . Considering the GAMA selection cut of  $r = 19.8$  mag, this redshift and its associated absolute magnitude cut are chosen such that they maximize the number of galaxies in the GLSSC. The catalogue also identifies 643 filaments, composed of an average of eight groups and spanning up to  $100 h^{-1}$  Mpc. The appendix of Alpaslan et al. (2014a) goes into further detail on the actual composition of the catalogue.

At its heart, the algorithm that generates the GLSSC relies on a slightly modified *minimal spanning tree* (MST) algorithm, similar to that of Doroshkevich et al. (2004) and Colberg (2007) and uses a multiple-pass approach, similar to Murphy et al. (2011). Initially, a volume-limited sample of groups from the  $G^3C$  are used as nodes of an MST to identify filaments; galaxies within a distance  $r$  of each filament are then associated with that filament. These galaxies, within and outside of groups, are together referred to as filament galaxies. The remaining galaxies (not in filaments) are processed through a second MST to identify tendrils and tendril galaxies, and any galaxy beyond a distance  $q$  from a tendril is considered to be a very isolated galaxy, which we call a void galaxy. Note that this approach makes no attempt to physically identify voids. The values for  $r$  and  $q$  are chosen such that the two-point correlation function  $\xi_2(r)$  of void galaxies is minimized, i.e. our fiducial assumption is that voids should have a minimal amount of coherent structure due to the low net accelerations experienced over the lifetime of the Universe. A third parameter,  $b$ , represents the maximum allowed distance between groups in order for them to be considered to be in the same filament; this is chosen such that at least 90 per cent of groups with  $L_* \geq 10^{11} L_\odot$  are located in filaments. The GLSSC is generated with  $b = 5.75 h^{-1}$  Mpc,  $r = 4.12 h^{-1}$  Mpc, and  $q = 4.56 h^{-1}$  Mpc.

## 2.1 Additional GAMA catalogues

Here we briefly introduce each of the other catalogues that are used for the analysis in this work. Where possible, we reference the publication that accompanies the catalogue, and suggest that the more curious reader refer to these for additional detail. Where no reference is given, the catalogue has been provided by one of the authors of this paper. We consider only data for galaxies in the three equatorial GAMA fields.

### 2.1.1 Galaxy spectra

This catalogue (SpecCatv25; Liske et al., in preparation) contains spectra for all galaxies observed using the 2dF instrument at the AAT in Australia, for GAMA. Spectra obtained at the AAT were redshifted by observers at the telescope, as well as via an automated algorithm AUTOZ [see Baldry et al. (2014) for details on AUTOZ, and Liske et al. (in preparation) for details on the spectroscopic campaign]. On average, redshift measurements for the spectra have an associated error  $\sigma$  of approximately  $27 \text{ km s}^{-1}$ , and only 0.2 per cent of redshifts are considered to be incorrect (Baldry et al. 2014; Liske et al., in preparation). Some spectra from previous surveys (e.g. SDSS) are also included in this catalogue. These spectra (and the

redshifts derived from them) form the most important data set for the catalogues of environment discussed below.

### 2.1.2 The GAMA Group Catalogue ( $G^3C$ )

The  $G^3C$  (GroupFindingv07; Robotham et al. 2011) is a group catalogue that has been put together using a slightly modified friends-of-friends algorithm that considers galaxies to be in a group if they are grouped both along the line of sight and when projected on to the sky. This successfully accounts for redshift space distortions caused by the peculiar velocities of galaxies in groups. The catalogue contains 23 838 groups with two or more members out to  $r = 19.8$  mag; these groups contain approximately 40 per cent of all galaxies in GAMA. This catalogue also provides galaxy pairing information, which is also used in this work and studied in Robotham et al. (2014). Parameters for the group-finding algorithm is calibrated by being run on a series of GAMA mock galaxy catalogues, described in Merson et al. (2013), and the optimal linking lengths have been verified as theoretically optimal in recent work by Duarte & Mamon (2014). The mock catalogues are designed to mimic the geometry of the fields observed by GAMA, as well as replicate the galaxy luminosity function of the survey. They are assembled by populating haloes taken from the Millennium Simulation (Springel et al. 2005) using the Bower et al. (2006) GALFORM semi-analytic galaxy formation model.

### 2.1.3 Aperture-matched photometry

Aperture-matched photometry for GAMA (ApMatchedCatv05; Liske et al., in preparation) is measured by running SExtractor (Bertin & Arnouts 1996; Bertin 2011) on imaging data from the SDSS and UKIDSS (for the *ugriz* bands and *YJHK* bands, respectively) in aperture-matched mode. This allows us to place apertures on sources in the *r* band (as this has the highest imaging quality and defines the main survey spectroscopic sample selection) and measure fluxes in all bands. The imaging data have been preprocessed into a series of 27 (9 bands  $\times$  3 fields) large mosaics using SWARP (Bertin et al. 2002) and have been normalized to a common zero-point and convolved to a common point spread function (PSF) of 2 arcsec (see Hill et al. 2011 and Driver et al., in preparation).

### 2.1.4 Stellar masses

The GAMA stellar masses (StellarMassesv16; Taylor et al. 2011) are estimated using photometry in the rest-frame *ugriz* bands from the aperture-matched catalogue ApMatchedCatv05, to which a series of synthetic spectra are fitted. The spectra are designed to incorporate an exponentially decaying star formation history, using Bruzual & Charlot (2003) models with a Chabrier (2003) initial mass function (IMF) and the Calzetti et al. (2000) dust obscuration law. The stellar masses are determined by integrals that are weighted to the probability of each fit. This catalogue also provides dust and extinction-corrected apparent and absolute magnitudes, as well as rest-frame and extinction-corrected (Galactic and self-attenuation)  $u - r$  and  $g - i$  colours, which are also used in this work. The extinction corrections are estimated during the synthetic spectral fits and have associated uncertainties of  $A_v \approx 0.15$  mag (Taylor et al. 2014), but this is likely to be an overestimation as the random errors on the rest-frame colours are of the order of 0.05 mag. As explained in Taylor et al. (2014), the amount of dust from which  $A_v$  is derived for each galaxy cannot be negative, leading to a possible

overestimation of  $A_v$  for dust-poor galaxies. This will translate into an error in  $(g - i)$  colours of up to 0.1 mag; however, these errors have no discernible impact on our results.

### 2.1.5 Sérsic photometry and morphology

This catalogue provides single-component Sérsic fits of galaxies, computed (`SersicPhotometryv07`) using the `SIGMA` software which wraps around various astronomy packages including `GALFIT3` (Peng et al. 2011; Kelvin et al. 2012). Along with providing a Sérsic index  $n_r$  for each galaxy, this catalogue also provides some other morphological parameters such as effective radius  $R_e$  and ellipticity, defined as  $1 - b/a$ , where  $a$  and  $b$  are the semimajor and semiminor axes of the galaxy. An ellipticity value of 0 is given to galaxies whose semimajor and semiminor axes are equal (i.e. round galaxies).

### 2.1.6 Emission line measurements and metallicities

This catalogue measures fluxes and equivalent widths for spectra for all GAMA galaxies. Measurements are made for 11 different emission features, including  $H\alpha$ ,  $H\beta$ ,  $O_{III} \lambda 5007$ , and  $N_{II} \lambda 6583$ , using single- and double-Gaussian fits to continuum-subtracted spectra. This is done in a manner similar to that described in Gunawardhana et al. (2013). Gas metallicities of galaxies are then calculated using the O3N2 index. This is defined as

$$O3N2 = \log_{10} \left( \frac{[O_{III}] \lambda 5007 / H\beta}{[N_{II}] \lambda 6583 / H\alpha} \right) \quad (1)$$

from which it is possible to calculate the O/H metallicity indicator as  $[12 + \log(O/H)] = 8.73 - 0.32 \times O3N2$  as per the prescription of Pettini & Pagel (2004). Line strengths are emission measurements and have been corrected for dust attenuation, and have been calibrated to match metallicities given by Tremonti et al. (2004), as per the prescription given in Lara-Lopez et al. (2013).

### 2.1.7 GALEX photometry

This catalogue provides *GALEX* NUV and FUV photometry for the GAMA II equatorial survey regions. The *GALEX* ultraviolet catalogue (`GalexPhotometryv02`; Andrae et al., in preparation) is a combination of archival data and pointed observations on equatorial GAMA fields. The archival data have been used to extend the ultraviolet coverage of the GAMA regions as much as possible.

### 2.1.8 WISE photometry

Photometry for the four mid-infrared *WISE* bands is provided in `WisePhotometryv01` for GAMA galaxies in all three equatorial fields that are matched to *WISE* observations. The catalogue does not include sources that have no GAMA match within 3 arcsec of a *WISE* source (see Cluver et al. 2014 for details). The photometry for each source is from the *WISE* All-Sky Data Release with standard aperture measurements for unresolved sources and isophotal photometry for resolved sources. Profile-fit measurements are also provided.

### 2.1.9 Multiband photometry

The process of amalgamating data from multiple sources into a single photometry catalogue (`20BandPhotomv02`) is described in

Driver et al. (in preparation) and builds on the work described in Hill et al. (2011); here we provide a brief summary. The *GALEX* (FUV, NUV), aperture-matched photometry ( $u - K$ ), and *WISE* (*W1-4*) catalogues are combined to PACS and SPIRE photometry derived from the PACS/SPIRE maps by measuring the flux in the appropriate optically defined aperture convolved with the appropriate PACS/SPIRE PSF.<sup>2</sup> This combination is done by exact name matching to unique identifiers that are given to each matching galaxy using `TOPCAT` (Taylor 2005). The combined catalogue is corrected for Galactic extinction using  $E(B - V)$  values provided by Schlegel, Finkbeiner & Davis (1998) and the coefficients listed in Liske et al. (in preparation). The final product is a catalogue that contains individual flux measurements in jansky across all bands for each individual GAMA galaxy, with dummy flux values included if that galaxy has not been surveyed in a particular band. These data are used only in Section 4.3.

### 2.1.10 Visual morphology

For a sub-sample of galaxies with  $0.002 \leq z \leq 0.1$ ,  $r < 19.8$  mag, this catalogue (`VisualMorphologyv02`) provides visual classifications of galaxy morphology as being either elliptical or non-elliptical. The classification was performed on postage stamps generated from three colour *giH*-band images with arctan scaling from the SDSS and VIKING or UKIDSS Large Area Survey data. The postage stamp sizes were set to a constant value of  $30 \text{ kpc} \times 30 \text{ kpc}$ , except if the implied size is greater than 100 pixels, in which case it was set to that value.

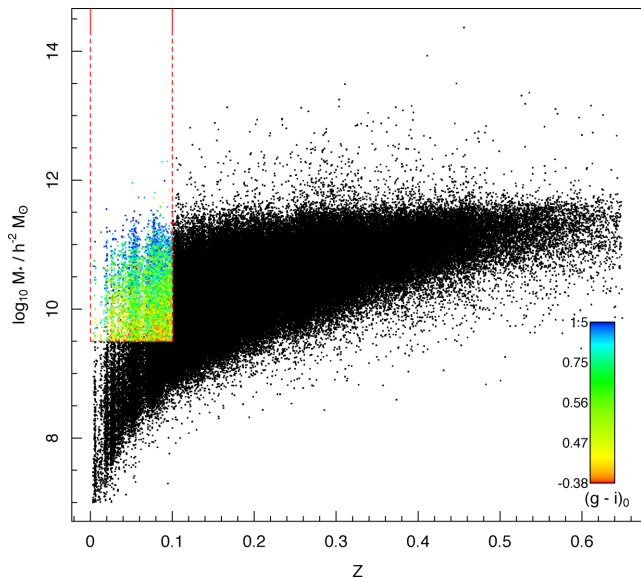
### 2.1.11 Surface density

The nearest-neighbour surface density,  $\Sigma_5$  (`EnvironmentMeasuresv5`; Brough et al. 2013), is calculated for all GAMA galaxies with reliable redshifts ( $nQ > 2$ ; Driver et al. 2011). The surface density is defined using the projected comoving distance to the fifth nearest neighbour ( $d_5$ ) with  $\pm 1000 \text{ km s}^{-1}$  within a volume-limited density-defining population:  $\Sigma_5 = 5/\pi d_5^2$ . The density-defining population has absolute SDSS Petrosian magnitudes  $M_r < M_{r, \text{limit}} - Qz$ ,  $k$ -corrected to  $z = 0$  following Loveday et al. (2012), where  $M_{r, \text{limit}} = 20.0$  mag and  $Q$  defines the expected evolution of  $M_r$  as a function of redshift ( $Q = 0.78$ ; Loveday et al., in preparation). Densities are then corrected for the survey  $r$ -band redshift completeness as  $\Sigma_5 = \Sigma_{5, \text{raw}} \times 1/\text{completeness}$ . Galaxies where the nearest survey edge is closer than the fifth nearest neighbour are flagged as upper limits.

## 2.2 Sample selection

Galaxy properties are well known to correlate with stellar mass. To ensure that we recover variations due to environment rather than these known stellar mass dependences, it is vital that we first remove the mass dependence from our sample. We do this by forcing our samples to be mass complete, using stellar mass data from the `StellarMassesv16` catalogue. We choose the limits  $z \leq 0.1$  and  $M_* \geq 10^{9.5} h^{-2} M_\odot$ , such that we can use the maximal number of galaxies from all catalogues considered in this work, each with

<sup>2</sup> Where objects overlap, care is taken to divide the flux between the two objects following the prescription outlined in appendix A of Bourne et al. (2012) (using the aperture-matched photometry catalogue as the input catalogue to deblend data); see also Driver et al. (in preparation).

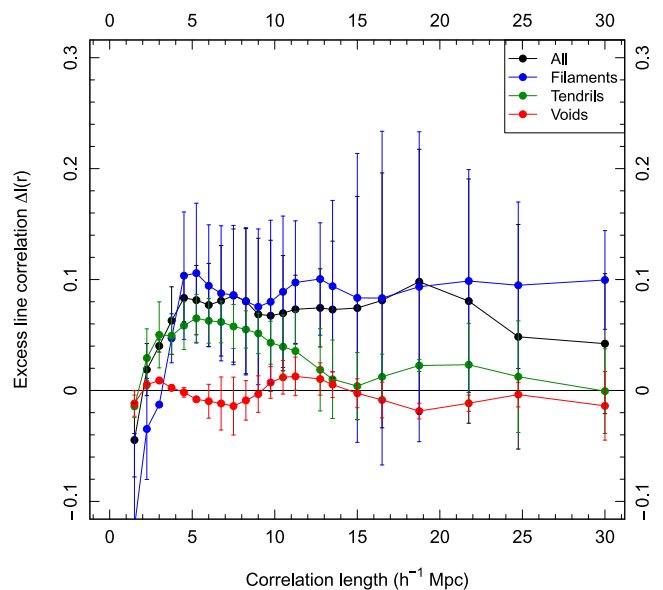


**Figure 1.** Stellar mass as a function of redshift for all GAMA galaxies. Galaxies with  $z \leq 0.1$  and  $M_* \geq 10^{9.5} h^{-2} M_\odot$  are coloured by their rest-frame  $g - i$  colour. Redshift and mass limits  $M_*$  are shown as red lines. These limits are chosen as they are shared by all the catalogues we consider in this work.

its own redshift limits. Our sample is shown in Fig. 1, where it is highlighted according to each galaxy’s rest-frame  $g - i$  colour, and the red lines mark our limits. In Alpaslan et al. (2014a), it is established that the GLSSC is mass complete only to  $\log M_*/h^{-2} M_\odot \geq 10.61$  (but does include galaxies of lower mass than this). To account for the discrepancy between this mass limit and our chosen sample, we take all galaxies with  $\log M_*/h^{-2} M_\odot \geq 9.5$  with  $z \leq 0.1$ , and  $M_r \leq -19.77 + 5 \log h$  mag and classify them as belonging to the same type of large-scale structure (i.e. filament, tendrils, or void) as their nearest neighbour using the GLSSC. Our low-mass large-scale structure sample contains 7195 volume-limited galaxies.

In Alpaslan et al. (2014b), we show that void galaxies in the GLSSC are isolated and not associated with any structures by making use of the line correlation function. Introduced in Obreschkow et al. (2013), the line correlation function  $l(r)$  measures the amount of linearity in structures of length  $r$  in a way that is analogous to how the two-point correlation function measures clustering on length-scales of  $r$ . The line correlation function takes the phase factor information of the galaxy density field [i.e.  $\hat{\epsilon}(\mathbf{k}) \equiv \hat{\delta}(\mathbf{k})/|\hat{\delta}(\mathbf{k})|$ ], where  $\hat{\delta}(\mathbf{k})$  is the Fourier transform (FT) of a galaxy density field  $\delta(\mathbf{r})$ ] and calculates the normalized three-point correlation of the inverse FT of  $\hat{\epsilon}(\mathbf{k})$  for three points on a straight line separated by a distance  $r$ . For an illustration of how the line correlation function can distinguish between random, spherical, and linear overdensities, we refer the reader to fig. 3 in Obreschkow et al. (2013).

We repeat this calculation for the galaxies in our low-mass GLSSC sample in order to confirm that the process of nearest galaxy association described above has not resulted in the association of galaxies in structures with void galaxies. As was done in Alpaslan et al. (2014b), we measure the filamentarity of each galaxy population by calculating its so-called excess line correlation with respect to a random points set. The excess line correlation is defined as  $\Delta l(r) = [l(r) - l_0(r)]\sqrt{f}$ , where  $l(r)$  is the line correlation of galaxies in the GLSSC placed into a box of side  $150 h^{-1}$  Mpc,  $l_0(r)$  is the line correlation of an equal number of galaxies placed

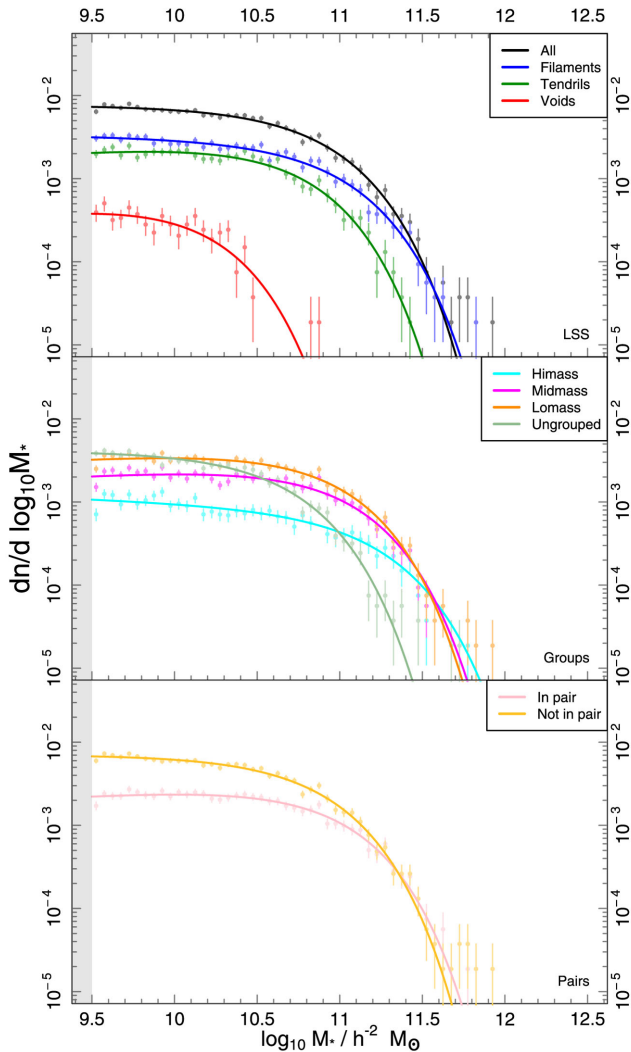


**Figure 2.** The excess line correlation  $\Delta l(r)$  of galaxies in filaments, tendrils, voids, and all galaxies shown in blue, green, red, and black, respectively. We compute  $\Delta l(r)$  individually for each population of galaxies in all three GAMA fields, and show the averaged results in this figure. The errors shown are the standard deviation in the excess line correlation across the three GAMA fields. Most notably, we still retain the 0 signal for void galaxies across large distances. Readers making a direct comparison between this figure and fig. 2 in Alpaslan et al. (2014b) must note that the line correlation calculation method has since been updated (see Wolstenhulme, Bonvin & Obreschkow 2015 for details). This is mainly reflected by a change in the vertical normalization of  $\Delta l(r)$ .

randomly into a cone identical to the GAMA geometry within this box, and  $f$  is the volume fraction of the GAMA fields within this box. Including  $f$  ensures that  $\Delta l(r)$  is approximately independent of the volume of the box (see section 3.4 in Obreschkow et al. 2013).

In Fig. 2, we show the excess line correlation of galaxies in the low-mass GLSSC sample averaged across all three equatorial GAMA fields. Notably, filament galaxies continue to have the highest  $\Delta l(r)$  signal, while void galaxies show no filamentarity. Errors shown are the variance of  $\Delta l(r)$  across all three GAMA fields, with the scatter due to the smaller number of points in this sample. The lack of filamentarity in the void galaxy sample confirms that we have not inadvertently associated galaxies within structures with the void galaxy population. Fig. 2 confirms the linearity (or lack thereof) present in the three large-scale structure classifications.

We further test our method by taking the GLSSC and randomly removing 50 per cent of the galaxies in each environment (filament, tendrils, and void). We then apply the reclassification scheme described in the beginning of this section to these removed galaxies, and compare that classification to what the GLSSC classification is. This random rejection process is realized 100 times, and the average recovery rate with the correct classification is 90 per cent for all three categories of large-scale structure (with a standard deviation sub-1 per cent, indicating that this process is robust to randomness). This high recovery rate is a strong indicator that the reclassification scheme does not create large biases in our large-scale structure sample. The  $\approx 10$  per cent of galaxies that are misclassified are usually those whose neighbours were also randomly removed, resulting in the nearest structure being of another type. Their spatial distribution is randomized within each realization, and the mean distance between a reclassified galaxy and its nearest neighbour is  $1.97 h^{-1}$  Mpc



**Figure 3.** GSMFs of galaxies in different environments by 0.1 dex bins in log-stellar mass, with single-Schechter function fits to each. The region shaded in grey marks our mass selection limit. Each panel shows GSMFs for galaxies in different types of environment: large-scale structure (top), groups (middle), and pairs (bottom), with the total GSMF for all galaxies shown as the black line in the top panel. Each set of GSMFs adds up to this total set. See fig. 3 in Kelvin et al. (2014) for GSMFs of galaxies by their morphological type.

for this test case, and approximately 10 per cent greater for the re-classification scheme used to generate the low-mass sample.

### 3 GSMFS BY ENVIRONMENT

In order to broaden our investigations beyond the simple filament, tendrill, and void sub-samples, we also look to now incorporate some of the additional information available within the GAMA data base, i.e. pairings and groups. Fig. 3 shows the GSMFs (see Baldry et al. 2012; Kelvin et al. 2014) of galaxies in a variety of different environments, including those in the low-mass GLSSC sample. The environmental types for which we calculate GSMFs in Fig. 3 are: filaments, tendrils, voids (as defined in the GLSSC), galaxies in groups with high-mass haloes, mid-mass haloes, and low-mass haloes (defined as  $M_H \geq 10^{14} M_\odot$ ,  $10^{13} \leq M_H \leq 10^{14} M_\odot$ , and  $M_H \leq 10^{13} M_\odot$ , respectively), galaxies not in groups, galaxies in

pairs, and galaxies not in pairs (any two galaxies with a physical projected separation of  $100 h^{-1}$  kpc and velocity separation of  $1000 \text{ km s}^{-1}$  are considered to be in a pair). Following the prescription of Kelvin et al. (2014), we calculate the GSMF in the form of a Schechter function:

$$\Phi(\tilde{M}) d\tilde{M} = \ln(10)\phi * 10^{(\tilde{M}-\tilde{M}^*)(\alpha+1)} \exp(-10^{(\tilde{M}-\tilde{M}^*)}) d\tilde{M} \quad (2)$$

where  $\tilde{M} \equiv \log_{10} M$ . The fit parameters for the stellar mass functions are given in Table 1. The errors in the parameters are estimated via jackknife resampling, with  $\sigma^2 = \frac{N-1}{N} \sum_{i=1}^N (x_i - x)^2$ , where  $x$  is the best-fitting parameter and  $x_i$  is the best-fitting parameter as given from a jackknife resampled version of the data. The jackknifing is done in such a way as to split the data into  $N = 10$  equal-sized bins. Across all populations, the slope at the low-mass end  $\alpha$  is statistically consistent with being constant. The rise at the low-mass end of the overall GAMA GSMF (Baldry et al. 2012) must therefore be caused by new low-mass populations being sampled, and not due to any fluctuations in the numbers of other populations below  $M_*$ .

## 4 ARE GALAXY PROPERTIES INFLUENCED BY LARGE-SCALE STRUCTURE?

### 4.1 Mass normalization

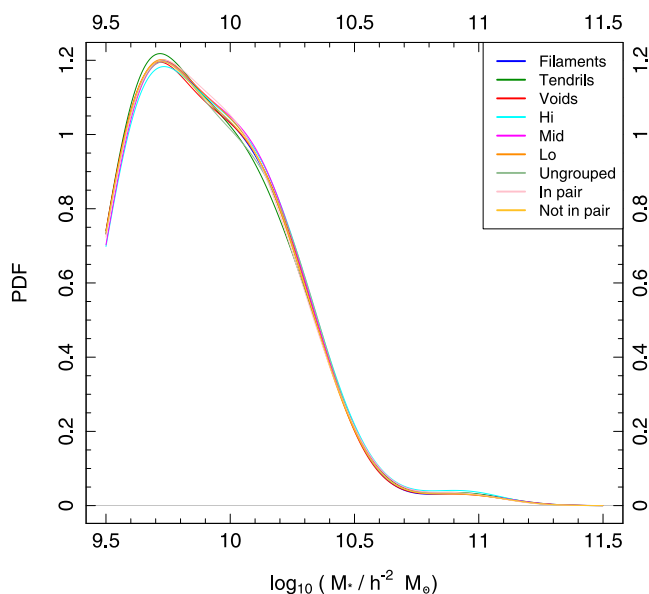
From Fig. 3 it is evident that galaxies in different environments have vastly different stellar mass functions. Given that stellar mass most directly influences galaxy evolution (e.g. Oesch et al. 2010; Robotham et al. 2013), performing our analysis on our galaxy sample is more likely to draw out trends in stellar mass, or conversely, blur out any trends caused by environment.

This mass segregation can be accounted for by resampling each environmental population of galaxies such that their GSMFs all match. In other words, we resample each population such that within the interval  $[\tilde{M}_*, \tilde{M}_* + d\tilde{M}_*]$  is equal across all galaxy populations. We split each population into bins of size 0.05 dex of stellar mass within  $9.5 \leq \log M_*/h^{-2} M_\odot \leq 11$ , and in each bin, randomly resample the galaxies in each population (except for the voids) so that their GSMF in that bin matches that of the void population in the same bin. Galaxies whose mass is greater than  $10^{11} \log M_*/h^{-2} M_\odot$  are discarded. The results of this process can be seen in Fig. 4, where we plot the probability distribution function (PDFs) of stellar masses of galaxies in different environments. We choose to match all populations to the GSMF of the void galaxy population, as this is the most extreme (and because we cannot ‘upscale’ that GSMF to the others). The stellar mass normalized samples are therefore random subsets of each galaxy sample that have the same mass distribution as the void sample. From here on, whenever we refer to a particular population of galaxies, we always refer to a sub-sample with mass matching, meaning that we are discussing galaxies whose stellar mass is within  $9.5 \leq \log M_*/h^{-2} M_\odot \leq 11$ . Fig. 5 shows the relative fraction of galaxies in their environments, split by large-scale structure, group membership, and pair membership.

For the remainder of this paper, we will combine our mass normalized environmental populations of galaxies with the various catalogues introduced in the preceding section. The sample we use is the galaxies that are common to all catalogues and are within our specified mass and redshift ranges. When mass normalized, this sample contains 28 781 galaxies. The sample size increases to 35 850 galaxies when the mass normalization is removed. Note that all environmental categories of galaxies are mass matched independently.

**Table 1.** Parameters for the single-Schechter function GSMF fits shown in Fig. 3. The columns show the knee in the Schechter function ( $M^*$ ), the slope at the low-mass end ( $\alpha$ ), the normalization ( $\phi^*$ ; in units of  $\text{dex}^{-1} \text{Mpc}^{-3}$ ), and the goodness of fit  $\chi^2/\nu$ . The fractional integrated stellar mass from the fits is also shown, for subdivisions of environment (marked by the horizontal lines in the table). Errors are estimated from jackknife resampling.

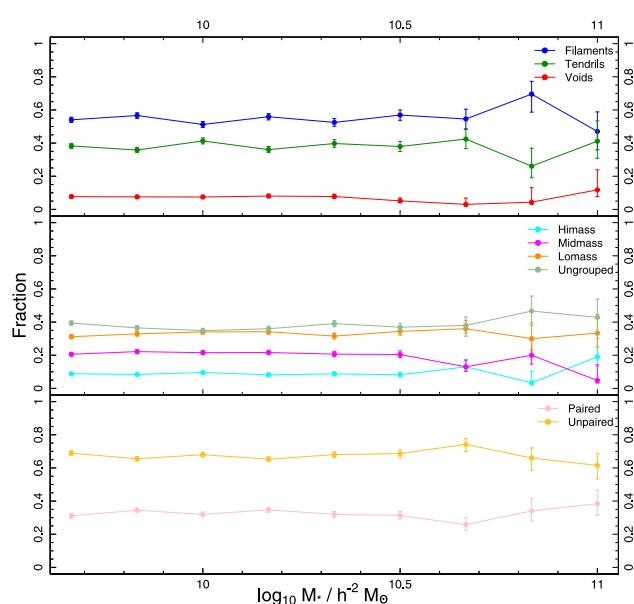
	$\log M^*/M_\odot$	$\alpha$	$\phi^*/10^{-3}$	$\chi^2/\nu$	$\int \Phi(M) dM$
All	$10.82 \pm 0.02$	$-0.97 \pm 0.02$	$2.00 \pm 0.13$	1.16	100 per cent
Filaments	$10.88 \pm 0.02$	$-0.99 \pm 0.02$	$1.52 \pm 0.07$	1.2	57 per cent
Tendrils	$10.66 \pm 0.03$	$-0.86 \pm 0.05$	$1.55 \pm 0.01$	1.09	39 per cent
Voids	$10.31 \pm 0.55$	$-1.24 \pm 0.62$	$0.15 \pm 0.19$	2.31	4 per cent
HiMass	$11.16 \pm 0.10$	$-1.06 \pm 0.07$	$0.27 \pm 0.06$	1.25	10 per cent
Mid-mass	$10.93 \pm 0.025$	$-0.87 \pm 0.02$	$1.12 \pm 0.05$	1.59	24 per cent
LoMass	$10.86 \pm 0.02$	$-0.87 \pm 0.02$	$1.74 \pm 0.06$	1.16	36 per cent
Ungrp	$10.64 \pm 0.04$	$-1.07 \pm 0.03$	$1.35 \pm 0.11$	1.60	30 per cent
InPair	$10.89 \pm 0.02$	$-0.87 \pm 0.03$	$1.22 \pm 0.06$	1.28	30 per cent
NotinPair	$10.80 \pm 0.02$	$-1.02 \pm 0.02$	$2.50 \pm 0.12$	1.01	70 per cent



**Figure 4.** Kernel density estimates of the stellar mass distribution in mass normalized galaxy populations (colour coded in the same way as Fig. 3). The bumps in density are due to Poisson noise in the void sample, which are then reproduced in the other populations by design.

#### 4.2 Colour, brightness, and morphology

Recent work studying the properties of void galaxies has shown them to be predominantly bluer and fainter with respect to their counterparts in higher density regions (e.g. Kreckel et al. 2012). Conversely, work by Eardley et al. (2015) which uses a tidal tensor description to classify GAMA galaxies into knots, filaments, sheets, and voids finds that the luminosity function of galaxies is independent from their large-scale structure classification. In this work, we present a comparison of a number of visual and photometric properties of galaxies in Fig. 6, where the  $r$ -band effective radius  $R_e$ ,  $r$ -band ellipticity,  $r$ -band absolute magnitude  $M_r$ , rest-frame and extinction-corrected  $u - r$  colour, and  $r$ -band Sérsic index  $n_r$  of galaxies in filaments, tendrils, and voids (in blue, green, and red, respectively) are compared to each other. The figure is arranged as a grid, with the scatter plots showing relationships between these various parameters, while the 1D histograms at the end of each



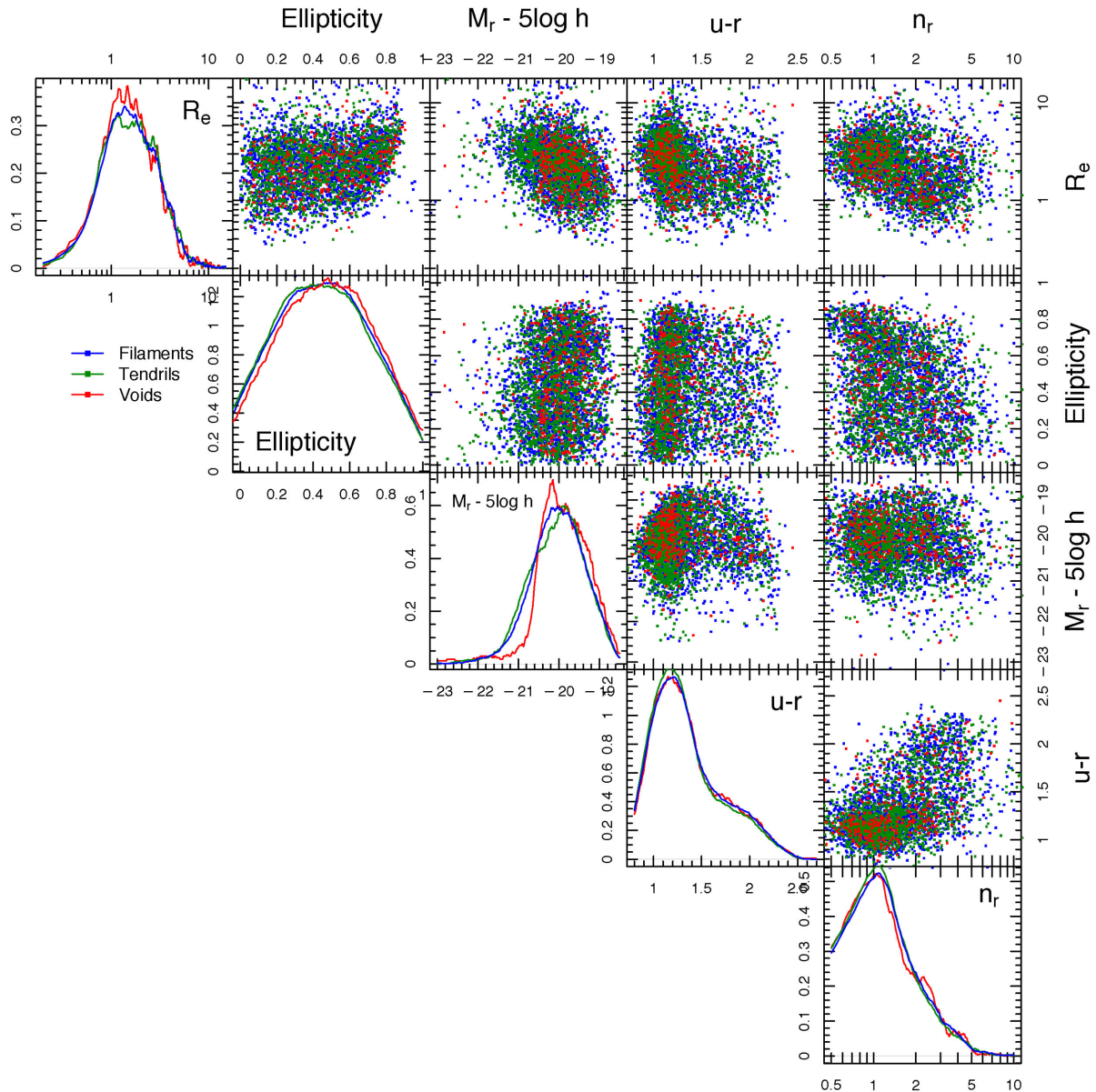
**Figure 5.** Fractional distribution of mass matched galaxies in different environments as a function of stellar mass bins. Note that the fractions are calculated within each environment type [for example, the fraction of galaxies in pairs is given as  $N_{\text{pair}}/(N_{\text{pair}} + N_{\text{notpair}})$ ]. Errors shown are calculated by sampling the Beta distribution (Cameron 2013).

row represent the distribution of that single parameter for the three populations of galaxies.

When we produce our mass normalized samples, we do not attempt to normalize for location within groups (i.e. dark matter haloes), so it is plausible that the fraction of satellite galaxies differs between the various samples. However, as discussed below, this does not appear to produce artificial differences between the void, tendril, and filament samples.

No population of galaxies uniquely inhabits a particular corner of the parameter spaces we are studying (for example, filament galaxies are not exclusively red, and do show some signal of bimodality in colour). In the context of the properties shown in this figure, large-scale structure has little impact on galaxy properties, beyond determining the form of the GSMF which is an important environmental effect in itself. There are no statistically significant



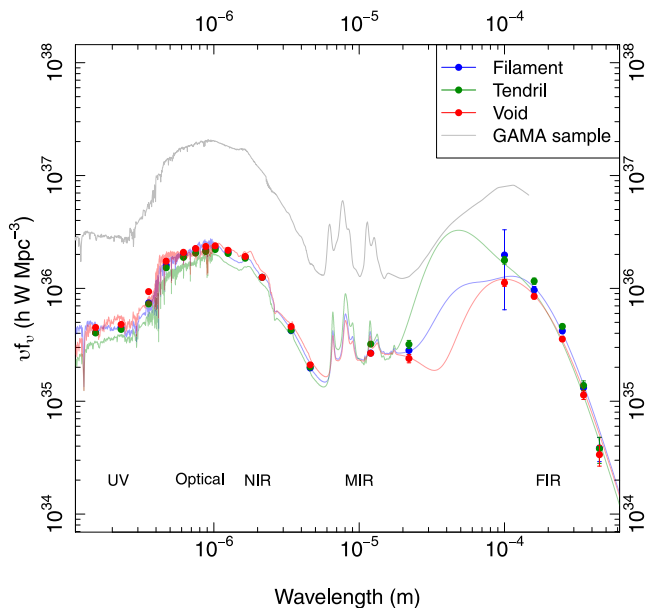


**Figure 6.** 1D and 2D distributions of galaxies as a function of effective radius, ellipticity, absolute magnitude  $M_r$ ,  $u-r$  colour, and  $r$ -band Sérsic index  $n_r$  for mass normalized galaxies in filaments, tendrils, and voids (shown as blue, green, and red lines and points, respectively). Each frame plots two of these parameters against each other, while the histograms show the distributions of each one individually. Aside from very subtle differences in the distribution of ellipticity, effective radius, and absolute magnitude, there is very little difference in the properties of galaxies in the three environments.

differences between the colour and Sérsic index of galaxies in filaments, tendrils, and voids; performing a two-sample Kolmogorov-Smirnov test between the  $u-r$  and  $n_r$  values for all three populations yields  $P$  values far exceeding 0.05, indicating that they are consistent with having been drawn from the same distribution. We only see subtle differences with respect to their effective radius and ellipticity. The difference in ellipticity might therefore be an indicator of discs being more prevalent in voids. The absolute magnitudes of void galaxies suggest that they are slightly, but consistently fainter than galaxies in filaments and tendrils. Given that this is a mass controlled sample, this implies a systematically higher mass-to-light ratio for void galaxies and is consistent with the picture of galaxies in more dense environments being able to accumulate a larger, brighter stellar population.

### 4.3 Total energy output

The cosmic spectral energy density (CSED; Driver et al. 2013a) describes the total energy being generated by galaxies within a representative volume of the Universe at a given epoch. The CSED provides an empirical measurement of the energy budget of a population of galaxies by wavelength, which is instrumental in understanding the different physics and stellar populations of different types of galaxies. An attractive feature of the CSED is that it can be modelled (e.g. Somerville et al. 2012; Driver et al. 2013b) given a priori knowledge of the cosmic star formation history, IMF, a stellar population model, and a dust attenuation model. Following the prescription of Driver et al. (2013a), we construct CSEDs of galaxies in filaments, tendrils, and voids across 20 bands in the FUV–FIR range. We focus on this wavelength range as it is entirely dominated



**Figure 7.** Total flux densities in 20 bands for mass normalized galaxies in filaments, tendrils, and voids, shown in blue, green, and red, respectively. The CSED shown in grey has been taken from Driver et al. (2013a) and shows an example of a typical GAMA galaxy SED. It has been scaled to lie above the points.

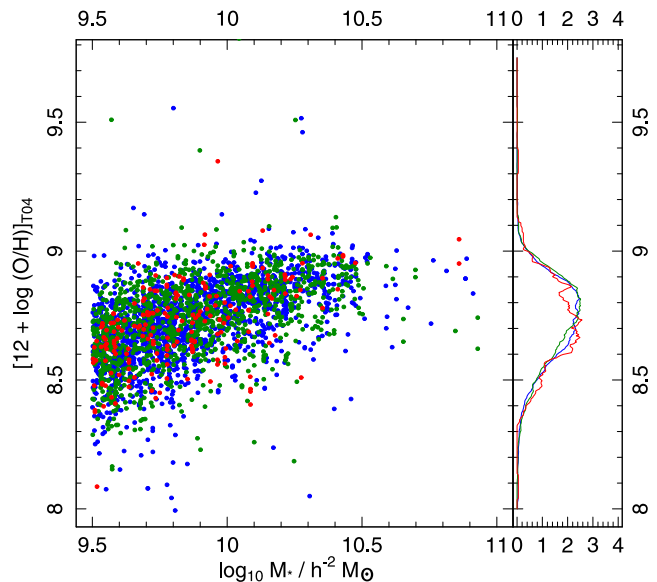
either by direct starlight (FUV to NIR) or reprocessed starlight that has been re-emitted by dust (FIR). At  $z \leq 0.1$ , the impact of AGN at these wavelengths is negligible (Driver et al. 2008, 2013a).

We construct our CSEDs by first summing up the luminosities of galaxies with photometry in all 20 bands that reside in filaments, tendrils, and voids; we consider only galaxies that are observed in all bands. This sum gives the luminosity density of those galaxies which can then be converted to an observed energy density  $\epsilon_{\text{obs}}$  by multiplying by the effective mean frequency of each filter or band. The intrinsic energy density is then  $\epsilon_{\text{int}} = \epsilon_{\text{obs}}/p_{\text{esc}, \lambda}$ , where  $p_{\text{esc}, \lambda}$  is the mean photon escape fraction for each band, derived as in Driver et al. (2007) using the dust attenuation model of Tuffs et al. (2004, see also Popescu et al. 2011). Finally, we normalize the energy densities in all bands to that of the  $K$  band, and show the results in Fig. 7. The data points represent the flux in each band, and we use MAGPHYS (Multi-wavelength Analysis of Galaxy Physical Properties; da Cunha et al. 2011) to fit an unattenuated CSED to each data set; these fits are designed to be for illustrative purposes only.

Fig. 7 shows some differences between the energy outputs of galaxies in different large-scale environments. Void galaxies show a very subtle decrease in emission in the FIR/submm bands. It is clear from the fits shown in this figure that the dust content is very poorly constrained, and so we cannot make statistically significant statements about the meaning of this small difference.

#### 4.4 Metallicity

Measuring the abundance of metals in the gas of galaxies is a strong indicator of the chemical reprocessing that has taken place in their stars, as well as the presence of heavier elements in their interstellar medium that have accumulated as a result of previous generations of star formation. Different elemental abundances can be affected by a number of dynamical processes, and are sensitive to environment, as well as stellar mass (e.g. Foster et al. 2012; Lara-Lopez et al.



**Figure 8.** Metallicities and stellar masses from EmLinesGAMAIIV01 and StellarMassesv16 shown for mass normalized filament, tendril, and void galaxies in blue, green, and red, respectively.

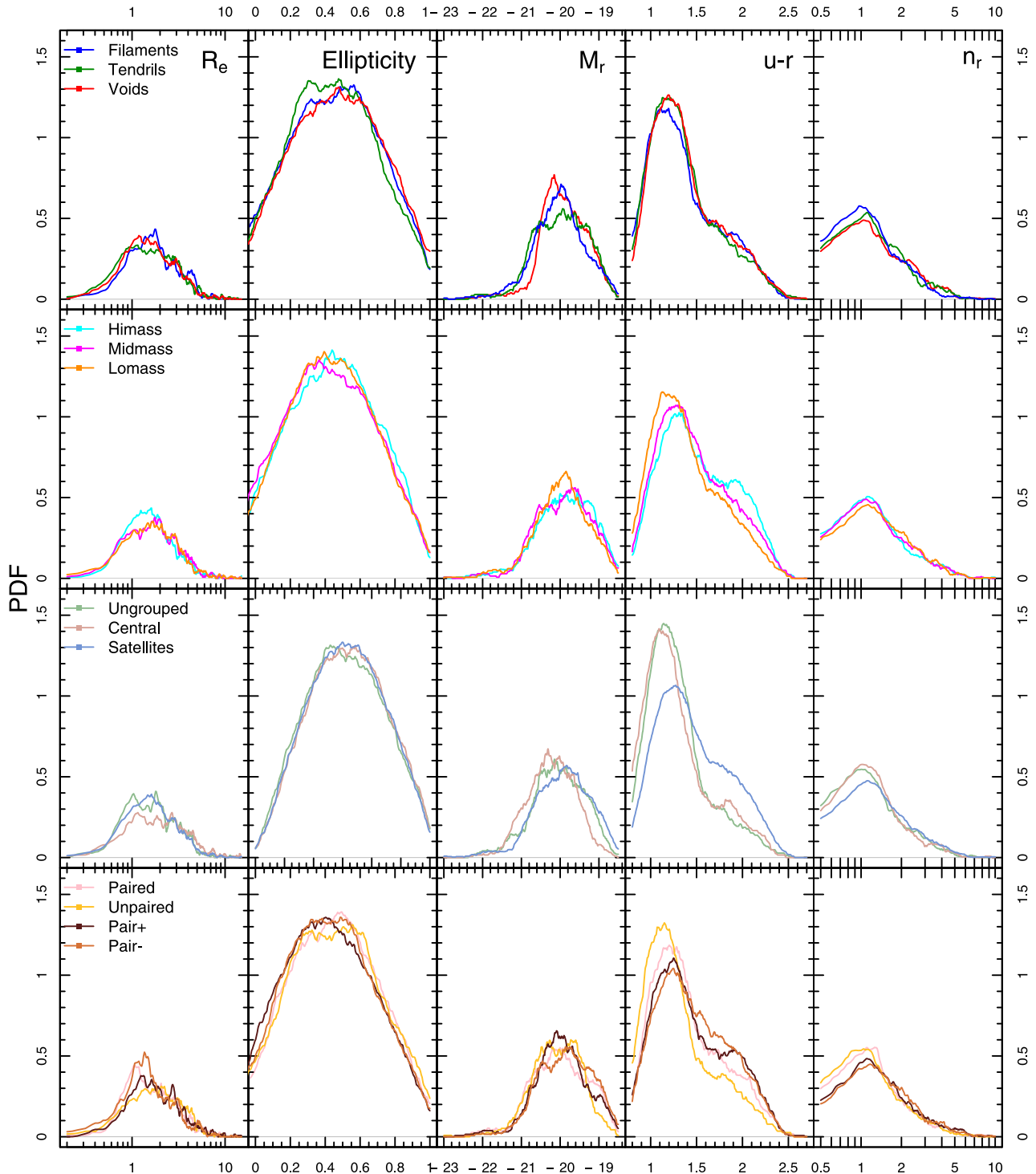
2013). Recent results show that galaxies in clusters have a tendency to be slightly more metal rich (Cooper et al. 2008), but that this relationship is largely driven by galaxies in very high density regions and local environment as opposed to cluster membership (Ellison et al. 2009). On the other hand, Hughes et al. (2013) find that in a sample of 260 nearby late-type galaxies, the stellar mass–metallicity relation is insensitive to environment.

We examine the mass–metallicity relation for star-forming galaxies in filaments, tendrils, and voids using gas metallicities. While there is no notable difference between filament and tendril galaxies, we do find that void galaxies have subtly lower metallicities in comparison to these other two populations, as can be seen in the right-hand panel of Fig. 8. We suggest therefore that material in filaments and tendrils may be being processed in a similar way, and perhaps less efficiently in void galaxies. However, considering the similarities in their CSEDs as shown in Fig. 7, this effect is not thought to be significant.

#### 4.5 Comparison to group and pair classifications

It is instructive to repeat some of the above analysis on galaxies classified according to their presence within a group or a galaxy–galaxy pair. This allows us to gain some understanding into a ‘hierarchy’ of how environment affects galaxy evolution: from pair–pair interactions, to the mass of the halo or group in which the galaxy resides, to its presence within large-scale structure.

We take our original sample of galaxies and classify them not by large-scale structure, but by presence within a group. If the galaxy is in a group, then it is classified according to the mass of the group (taken from GroupFindingv07). These are dynamical mass estimates of each group calculated using the group’s velocity dispersion and radius. See Robotham et al. (2011) for a discussion on how these properties were measured. We also identify all galaxies in pairs that are within  $100 h^{-1}$  kpc from each other, with velocity separations of  $\leq 1000 \text{ km s}^{-1}$  (Robotham et al. 2014). 50.16 per cent of galaxy pairs in groups exist within groups with three or more members; in

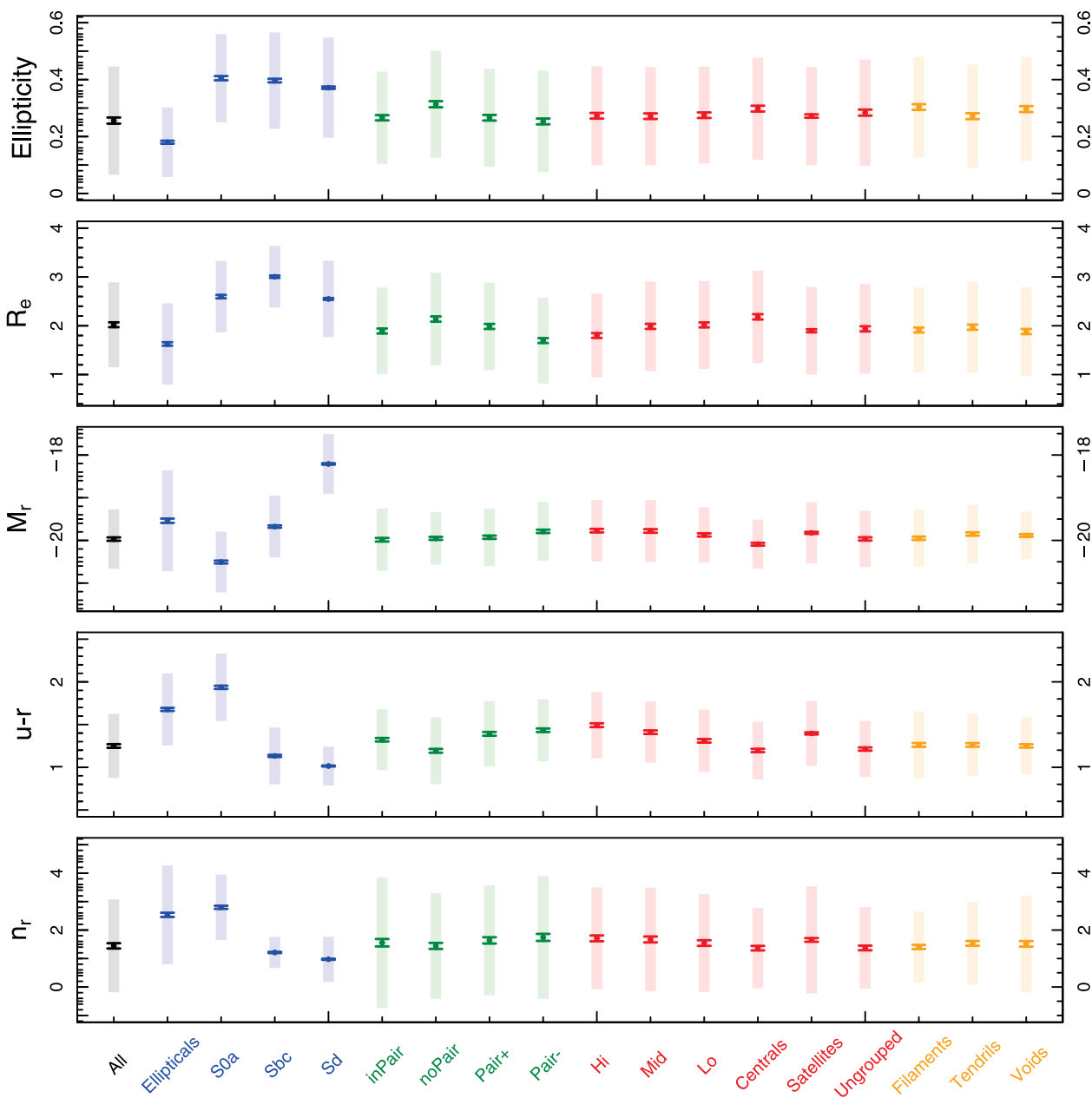


**Figure 9.** The PDFs of effective radius, ellipticity,  $r$ -band absolute magnitude  $M_r$ ,  $u - r$  colour, and Sérsic index  $n_r$  for galaxies split by three different environment types: large-scale structure (top row), halo mass and galaxies not in groups (second row), and paired and unpaired galaxies (bottom row). There is an overall trend for galaxies outside of groups, in group centres, and outside of pairs to show similar characteristics, particularly in  $R_e$ ,  $u - r$  colour, and  $n_r$ .

other words, they are pairs within larger groups. Finally, note that all samples are mass matched to the void galaxy population.

We take the same properties used to generate Fig. 6 and this time plot them for galaxies in groups in high-mass, intermediate-mass, and low-mass haloes (defined as  $M_H \geq 10^{14} h^{-1} M_\odot$ ,  $10^{13} \leq M_H \leq 10^{14} h^{-1} M_\odot$  and  $M_H \leq 10^{13} h^{-1} M_\odot$  respectively),

galaxies not in groups, central and satellite galaxies in groups, galaxies within and outside pairs, and the dominant and sub-dominant galaxy of each pair (all of these populations are mass controlled, as described in Section 4.1). Fig. 9 displays the distribution of these parameters as a function of different environments, with each row representing a different classification type. From top to bottom, the



**Figure 10.** Distributions of the same properties shown in Fig. 6, but for a greater number of populations. The points plotted are medians of that parameter for each population, with shaded regions showing the standard deviation of each parameter, and the error bars representing the standard error of the mean (i.e.  $SD/\sqrt{N-1}$ ). It is for galaxies classified by morphological type that we see the greatest variation in properties; all other populations span the same approximate range (as shown by the vertical lines) but do show differences in their medians and the widths of their distributions.

rows show classifications by large-scale structure, presence in a group, and presence in a pair. Pair+ and Pair– denote the dominant and sub-dominant member of a pair.

Fig. 9 reveals a number of interesting trends: namely that different environments tend to separate out certain galaxy properties better than others. An obvious example of this is that halo mass (or group membership) does not appear to be a strong predictor of galaxy luminosity or ellipticity. Similarly, halo mass alone does not strongly correlate with Sérsic index. There is an overall tendency for galaxies that are not in pairs, and not in groups, to exhibit similar properties: fainter, bluer, higher ellipticity, and a Sérsic index consistent with being a disc galaxy. On the other hand, galaxies that

reside within groups and pairs have a bimodal colour distribution with a higher red peak and higher Sérsic indices consistent with early-type galaxies, but do not tend to be more luminous, though we make this statement whilst acknowledging the caveat that we have controlled our sample for mass.

Our results regarding the properties of pairs are in excellent agreement with Robotham et al. (2013), who conclude that the net effect of close pairs is a suppression of star formation. This is reflected in our results as paired galaxies being far redder than unpaired galaxies [which is also in good agreement with Davies et al. (in preparation)]. These results suggest a scenario where the process of infalling into a higher density structure generates changes in

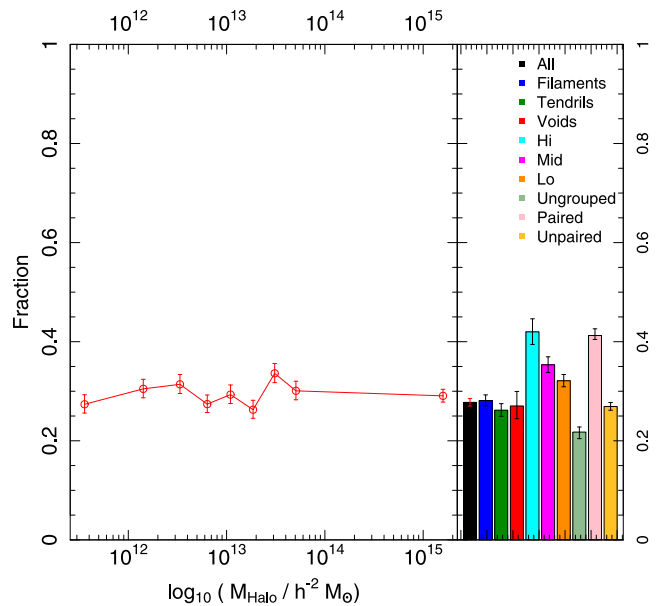
the morphology and colour of a galaxy. This is consistent with the recent results (e.g. Valentinuzzi et al. 2011; Lopes, Ribeiro & Rembold 2014; Robotham et al. 2013; Lacerna et al. 2014) which indicate that local density plays a more important role in galaxy evolution than the mass of the halo in which the galaxy resides. Central galaxies in groups occupy the same parameter space as ungrouped galaxies; this is consistent with the findings of Robotham et al. (2013). Ungrouped galaxies can be interpreted as the central galaxies of undetected groups (i.e. GAMA is not sufficiently deep to observe their satellites). Notably, fig. 10 of Robotham et al. (2013) establishes that central galaxies with  $M_* \approx 1.25 \times 10^{10} h^{-2} M_\odot$  are more likely to be late type than centrals of a higher mass. The distribution of Sérsic indices for central galaxies in our sample of  $9.5 \leq \log M_*/h^{-2} M_\odot \leq 11$  is consistent with this finding, and suggests that central galaxies with even lower masses are even more likely to be late type. It is the satellite galaxies in groups that are most directly affected by the group environment, as shown in their distribution in Fig. 9. Again, this is consistent with the findings of Robotham et al. (2013).

Fig. 10 shows an alternative view of the properties shown in previous sections, and for a wider selection of environments. Alongside the environment types discussed above, for this analysis we also consider visual classification of morphology, i.e. E, S0a, Sbc, and Sd galaxies. These galaxies were visually classified by three pairs of independent observers as being early type or late type, based on the presence of a disc or disc-like feature. The sample contains approximately 20 000 galaxies, within  $0.002 < z < 0.1$ . All environment and morphological samples are mass matched to the void galaxies. The environment types are colour coded according to common ‘types’: morphological types are shown in blue, pairs in green, groups in red, and large-scale structure in orange. Shaded regions show the spread of the data, and the error bars are the standard error about the median.

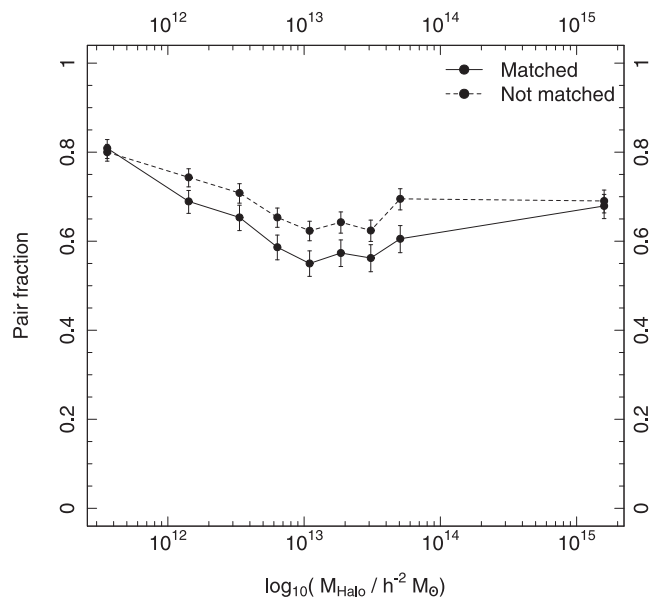
#### 4.5.1 Elliptical fraction

We can similarly look at the fractions of early- and late-type galaxies in these environments, using the visually classified morphological galaxy sample. We identify all galaxies in this sample that belong to a group, and track the fraction of early-type galaxies in groups as a function of halo mass. These results can be seen in Fig. 11, where the left-hand panel shows, in red, the fraction of early-type galaxies as a function of halo mass. We do not see a correlation between early-type fraction and group mass, when considering all galaxies (i.e. without mass normalization).

The right-hand panel of Fig. 11 displays the total fraction of early-type galaxies in different environment types. These results are consistent with the galaxy types identified in Fig. 9, in the sense that galaxies in the field have a lower early-type fraction. Unlike the left-hand panel of the figure, which shows the elliptical fraction as a function of halo mass for all galaxies, the right-hand panel shows that mass controlled galaxies in high-mass haloes have a higher elliptical fraction than those in intermediate- and low-mass haloes. Given that the upward trend in the fraction of early-type galaxies with halo mass is seen only for a narrow subset of mass controlled galaxies, we reason that the presence of massive ellipticals in haloes of all masses drives up the fraction in the left-hand panel. To check if the increase in elliptical fraction in high-mass groups is simply due to a larger presence of pair galaxies in such systems, we show the fraction of galaxies in pairs in our mass normalized sample as a function of halo mass in Fig. 12. We note a

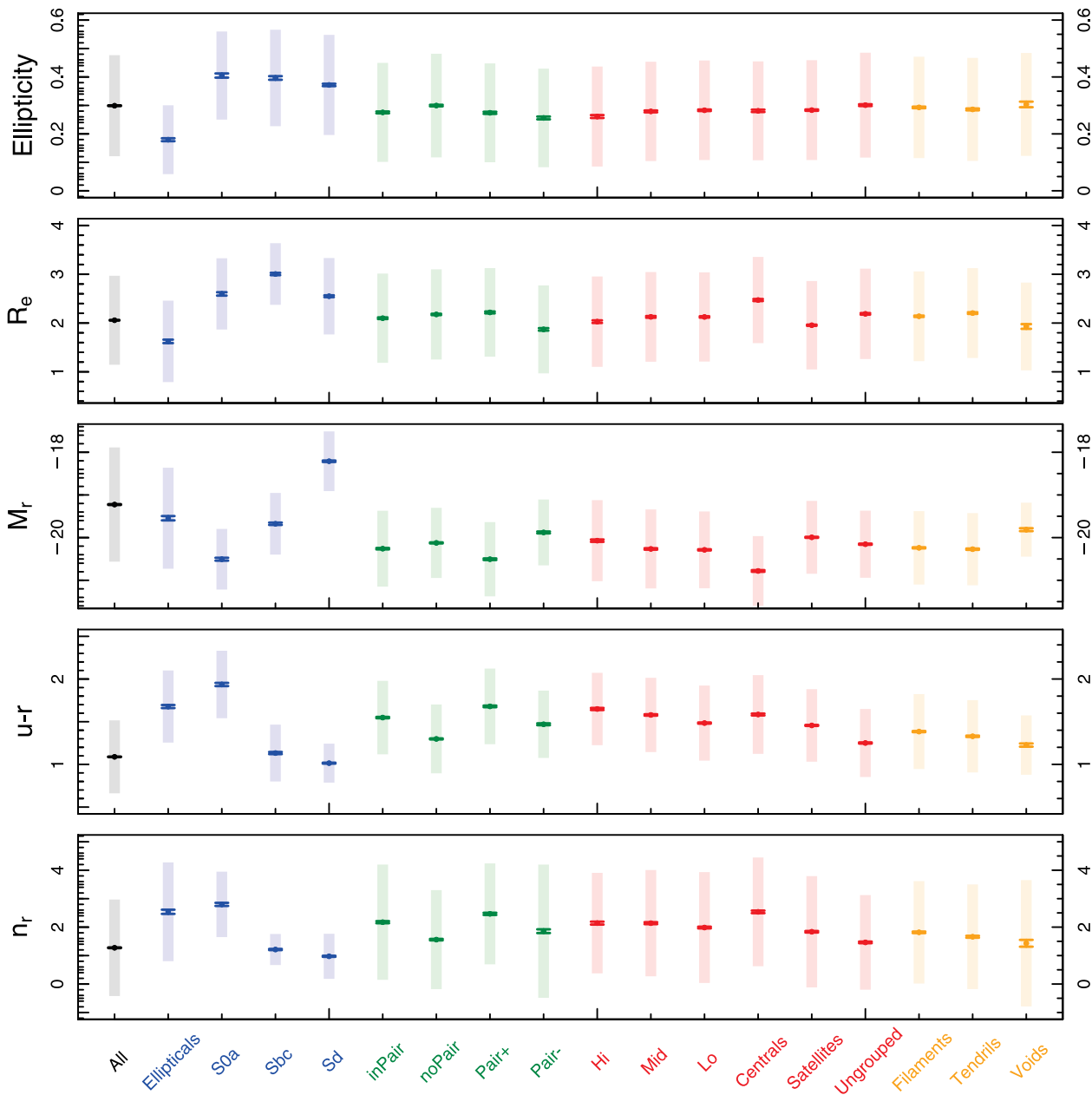


**Figure 11.** Fraction of ellipticals of *all* galaxies in VisualMorphology02 that are in groups as a function of halo mass shown in red. The fraction of ellipticals does not change as a function of group mass. Note that elliptical fractions are calculated in bins of halo mass each containing an equal number of galaxies. The right-hand panel shows the fraction of elliptical galaxies in a variety of environments. The error bars show  $1\sigma$  uncertainties in the population fraction, as calculated using the QBETA function (Cameron 2013).



**Figure 12.** Fraction of galaxies that are considered to be in pairs as a function of halo mass, in bins of equal size. For each bin, we plot the fraction  $N_{\text{pair}}/(N_{\text{pair}} + N_{\text{notpair}})$  for all galaxies in haloes of that mass bin, and include both mass matched and unmatched galaxies. We note a slight tendency for the fraction of galaxies in pairs to fall in higher mass haloes, and that this trend persists even when we remove the mass matching.

small, statistically significant downward trend in pair fraction as a function of halo mass. Fig. 12 indicates that the increased fraction of elliptical galaxies in more massive haloes (for a mass controlled sample) is not related to presence in pairs.



**Figure 13.** As with Fig. 10, but for galaxies whose masses have not been normalized. Most trends are notably more exaggerated in this figure, with the exception of the morphologically classified galaxy population, which is a strong indicator for the dominance of stellar mass and local density in influencing these parameters.

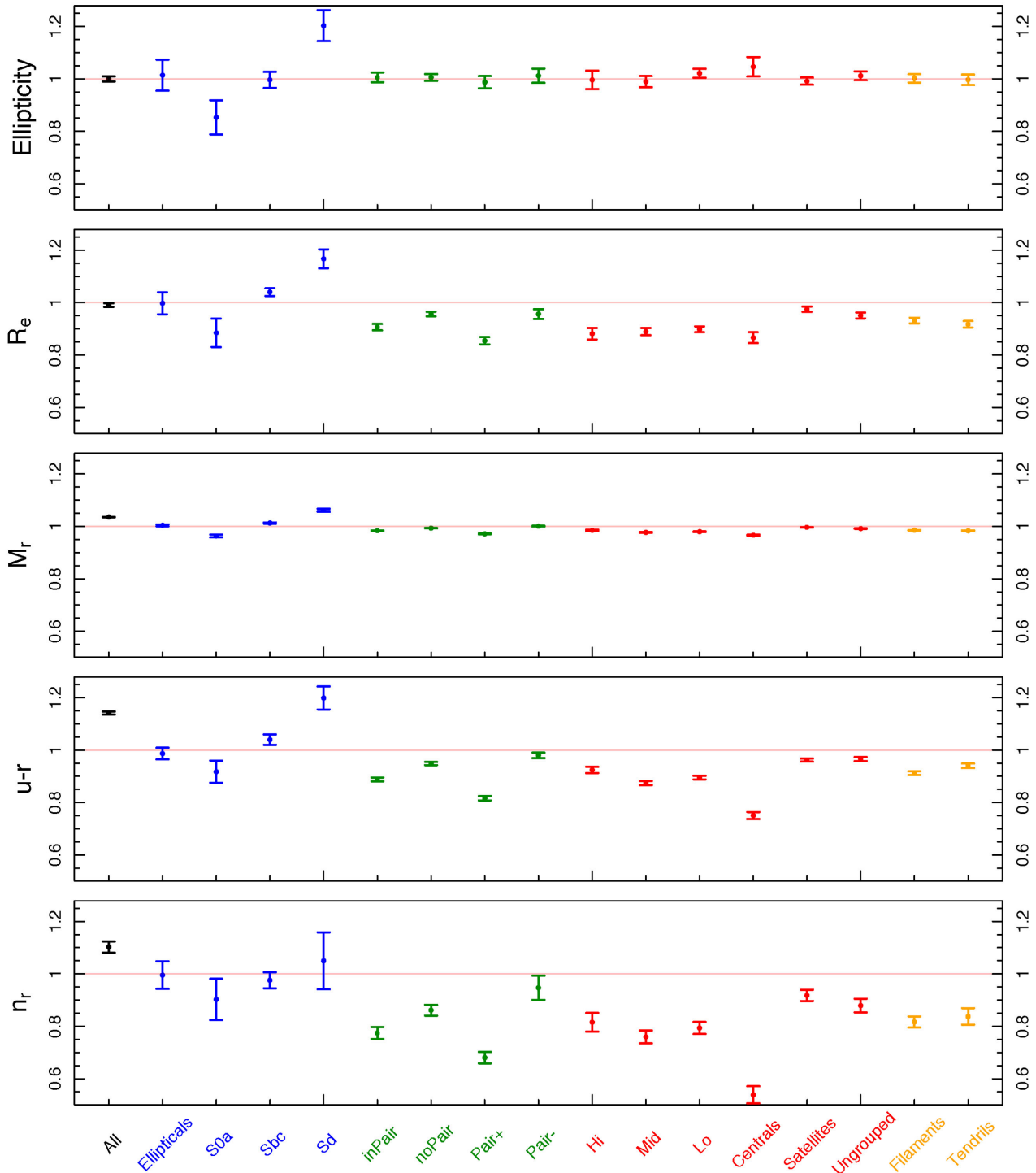
## 5 HOW DOES MASS NORMALIZATION AFFECT OUR RESULTS?

Our analysis and results so far have been restricted to the narrow and noisy mass distribution occupied by our sample of void galaxies. In this section, we not only examine the properties of galaxies without any mass control, but also match them to the smoother Baldry et al. (2012) GSMF.

### 5.1 Removing mass control

In order to better understand the effect of controlling stellar mass in our sample, we replicate the results of Fig. 10 for galaxies without

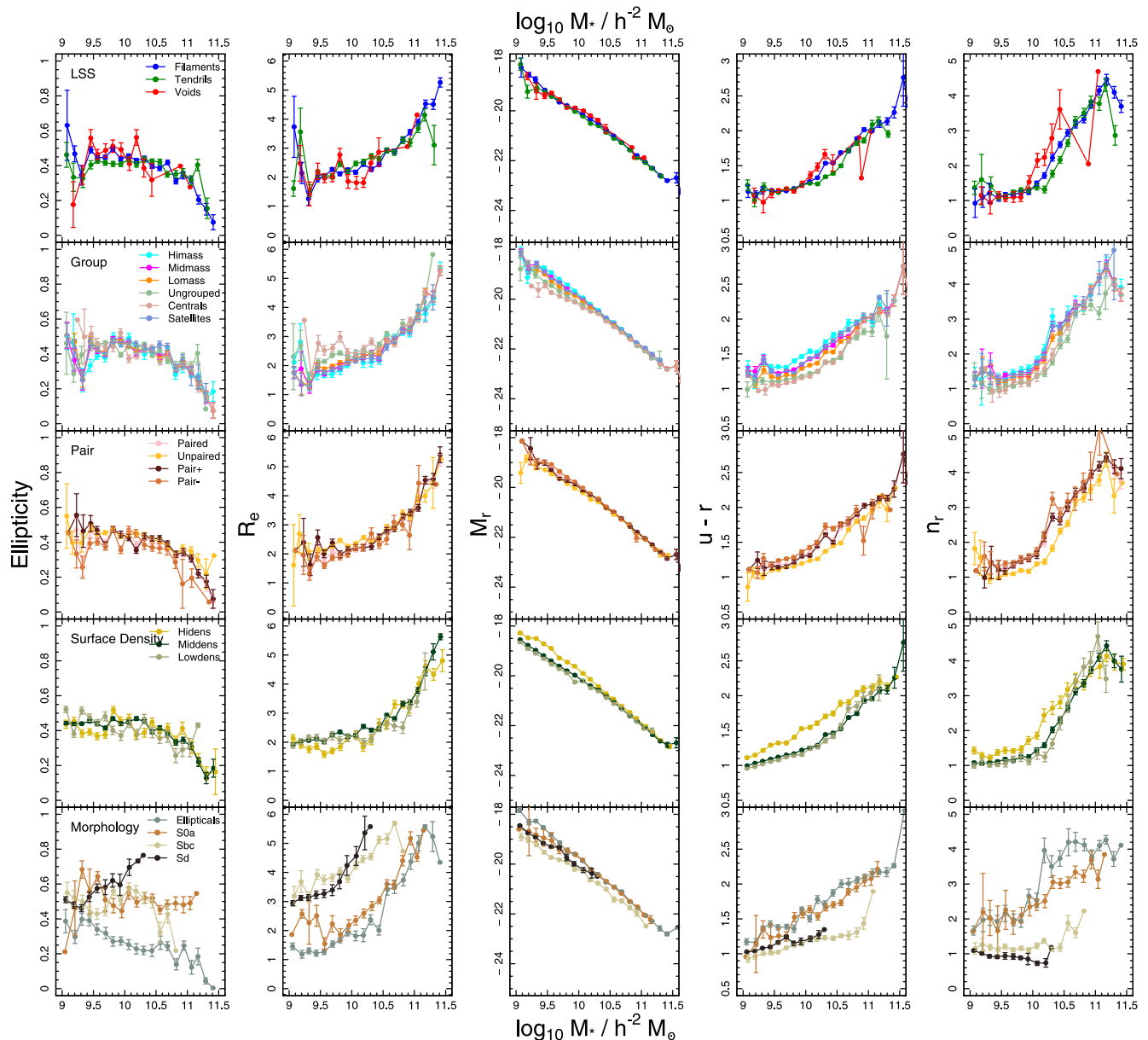
mass normalization. Removing mass normalization has a number of effects, which can be seen in Fig. 13. An immediately obvious result is that the galaxy properties shown in this figure show greater trends with environment (with the exception of those for galaxies classified by morphological type, where we continue to see the same trends). If the reintroduction of stellar mass variations leads to greater trends in the properties of galaxies classified by environment and *not* by morphology, it stands to reason that stellar mass is more influential in governing the parameter space that galaxies inhabit, cf. large-scale environment. A secondary conclusion drawn from Fig. 13 is that morphological classifications of galaxies are strong predictors of their properties, even when controlling for stellar mass.



**Figure 14.** Ratios of the median values of each of two galaxy samples shown in Figs 10 and 13 (i.e. the ratio between the median for the mass normalized sample and the non-mass normalization sample). The errors shown are standard errors about the median. We do not show void galaxies in this figure, as the population is the same for both samples.

We can also compare the medians of the distributions of each property shown in Fig. 13 between the mass normalized and non-mass normalized populations. Such a comparison quantitatively highlights the effects of mass normalization. In Fig. 14, we plot the ratios of the medians of the mass normalized and non-mass normalized galaxies for each population, for each of the properties discussed in previous figures. The void galaxy sample is the same

for both samples, and so is not shown in this figure. Different populations appear to show a different amount of susceptibility to mass normalization, as evidenced by the larger value of the ratio in those properties. Colour and Sérsic index appear to be the most affected. Central galaxies exhibit the largest departure from unity, once again highlighting how the properties of central group galaxies differ with mass, as shown in Robotham et al. (2013).



**Figure 15.** Relationships between stellar mass and ellipticity,  $r$ -band effective radius  $R_e$ , absolute magnitude  $M_r$ ,  $u - r$  colour, and  $r$ -band Sérsic index  $n_r$ , for galaxies classified according to large-scale structure, group membership, pair membership, surface density, and morphology. Each population is binned in stellar mass, and the  $x$ -coordinate of each bin is the average stellar mass of the galaxies in that bin. Errors shown are standard errors about the mean (points with no error bars are single detections). There is an overall tendency for galaxies in all environments to be correlated with mass in a similar way, with only morphological classifications showing distinct trends.

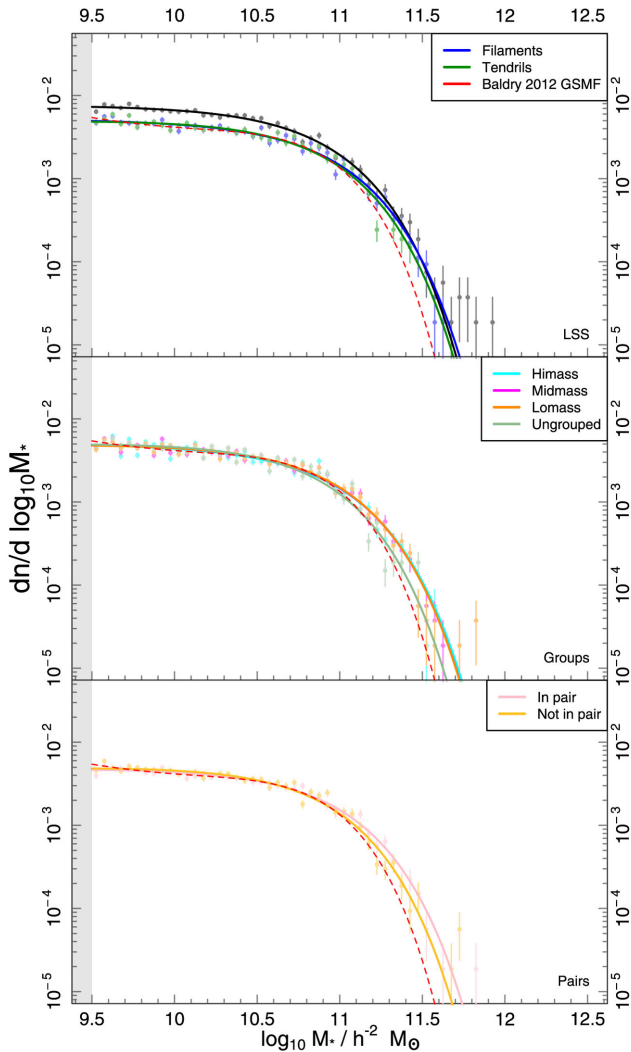
To further explore these results, we study the mass evolution of the parameters examined in Fig. 13 across environments. We include all galaxies that were used in generating the GSMFs in Fig. 3, without any mass matching in any populations. The relationship between stellar mass and these parameters (ellipticity,  $r$ -band effective radius  $r_e$ , absolute magnitude  $M_r$ ,  $u - r$  colour, and  $r$ -band Sérsic index  $n_r$ ) is shown in Fig. 15. We also include this relationship for galaxies classified by their local density (based on the distance to the fifth nearest neighbour of each galaxy). We split this population into three bins: containing the lowest  $1\sigma$  of the data, between  $1\sigma$  and  $3\sigma$ , and above  $3\sigma$ . Galaxies in large-scale structure, groups, and pairs tend to show a similar evolution in their parameters with stellar mass regardless of the environment they reside in. We do

see a tendency for galaxies in more massive haloes, and in pairs, to be systematically more red and have a higher Sérsic index across the whole mass range, but this pattern is not seen for large-scale structure. Galaxies classified by morphology display considerably different trends. We should not be surprised that this is the case for ellipticity,  $n_r$ , and  $R_e$  (although it is notable that  $n_r$  tends to increase with mass for galaxies classified as ellipticals or S0a galaxies).

## 5.2 Baldry et al. (2012) GSMF

The Baldry et al. (2012) GSMF describes the mass distribution of 5210 galaxies from the first three years of the GAMA survey, covering an area of 143 square degrees. The galaxies are selected such





**Figure 16.** GSMFs of galaxies separated by environment, as in Fig. 3, this time compared to the GSMF from Baldry et al. (2012), which is shown as the dashed magenta line in each panel.

that they are magnitude complete ( $r = 19.4$  mag for galaxies in G09 and G15 and  $r = 19.8$  mag for G12) and with  $0.002 < z < 0.06$ . The GSMF is then computed using a density-corrected  $1/V_{\max}$  method [see section 2.5 of Baldry et al. (2012) for details]. We show this GSMF as the dashed magenta line in each panel of Fig. 16, where the mass functions of galaxies in different environments sampled such that they now match this GSMF are also shown. Void galaxies are necessarily removed from this analysis. These stellar mass functions have slightly higher number densities at higher masses; this is caused by small numbers of high-mass ( $\geq 10^{11.5} h^{-2} M_{\odot}$ ) galaxies influencing our Schechter function fits. Across all environments, our sample contains only 17 such high-mass galaxies, so this discrepancy has no discernible influence on our conclusions.

The resulting mass matched sample is similar to the void matched sample used in previous sections of this paper in that it provides a mass-unbiased selection of galaxies. By matching to the Baldry et al. (2012) GSMF, however, we are able to include a larger number of galaxies at higher mass, most importantly, galaxies whose mass is greater than  $M_{*}$ . It is therefore a high-mass alternative to the void matched sample used earlier in this paper. A version of Fig. 9 made with this higher mass matched sample is shown in Fig. 17. Similarly,

Fig. 18 is equivalent to Figs 10 and 13. Large-scale structure (i.e. filaments and tendrils) continue to have similar characteristics at these higher masses. For groups and pairs, the inclusion of higher mass galaxies has a number of discernible effects in the distribution of properties. While group mass continues to be a poor predictor of  $M_r$  and  $n_r$ , centrals, satellites, and ungrouped galaxies show a greater variation in their luminosities compared to galaxies in groups. All populations show an increase in the bimodality of their colours, as a result of the inclusion of higher mass galaxies. Central galaxies are now less likely to have Sérsic indices consistent with having a disc, which is consistent with the findings of Robotham et al. (2013), who show that higher mass central galaxies are more likely to be elliptical. Dominant and sub-dominant pair galaxies show a large difference in their  $M_r$  distributions compared to Fig. 9, and we see fewer blue dominant pair galaxies. These results are also consistent with Robotham et al. (2013), who show that more massive dominant pair galaxies are more likely to be early type than their lower mass dominant pair counterparts.

## 6 SUMMARY AND CONCLUSION

We have used structural and photometric data products from the GAMA survey to seek out trends in galaxy properties as a function of non-local environment. We focus in particular on parameters directly affected by changes in stellar populations: colour, brightness, morphology, and total energy output, as well as some derived parameters. Fig. 3 highlights the fact that galaxies in different environments have strongly varying stellar mass functions. We control for this aspect by normalizing our samples so that their stellar mass functions match those of void galaxies, which have the most extreme mass distribution. This ensures that our comparisons are free from any stellar mass bias. By looking at the total CSED of galaxies in different environments in Fig. 7, we can see that void galaxies have slightly lower emission in IR bands, but these fits are poorly constrained. Similarly, metallicity does not appear to be strongly affected by large-scale structure (Fig. 8). Fig. 6 establishes that when controlling for the mass distribution, the properties of galaxies in different large-scale environments are largely the same.

We broaden our investigation and look at how the properties examined in Fig. 6 change for galaxies in group and pair environments. Our results are shown in Figs 9 and 10, and suggest a tendency for galaxies outside of structures (i.e. galaxies not in groups, and not in pairs) to inhabit similar parameter spaces. These unpaired and ungrouped galaxies are blue, faint, and late type, but we do not see this for galaxies in voids. Curiously, group mass does not appear to correlate strongly with certain parameters: most notably Sérsic index, absolute magnitude, and ellipticity. Ungrouped galaxies are strongly unimodal in their colour distribution, suggesting a change in stellar populations driven by infall into groups. We see distributions for central and satellite galaxies in groups, as well as dominant and sub-dominant galaxies in pairs, that are consistent with other GAMA results from Robotham et al. (2013). The most visible trends are for galaxies classified by pair membership, in that galaxies in pairs show signs of being much more red (i.e. having suppressed star formation) and have a higher Sérsic index. These trends are seen again in Fig. 11, which shows the fraction of galaxies that are early type to be much higher in pairs and higher mass groups (when one controls for stellar mass).

Aware that mass matching to the void galaxy sample restricts our results to a narrow mass range, we generate a second set of mass controlled galaxies, this time matched to the GAMA GSMF from Baldry et al. (2012). While galaxy properties continue to be

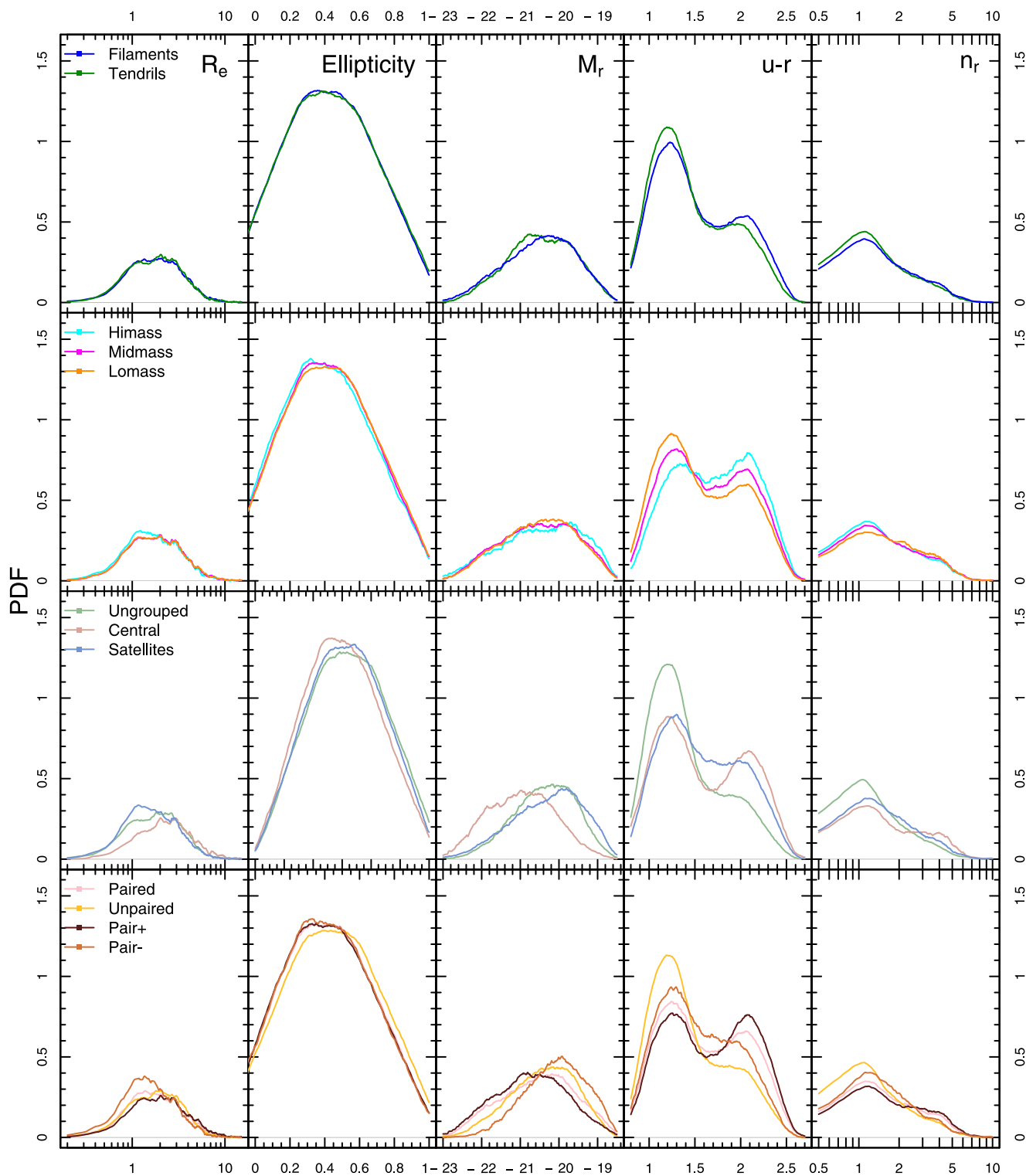
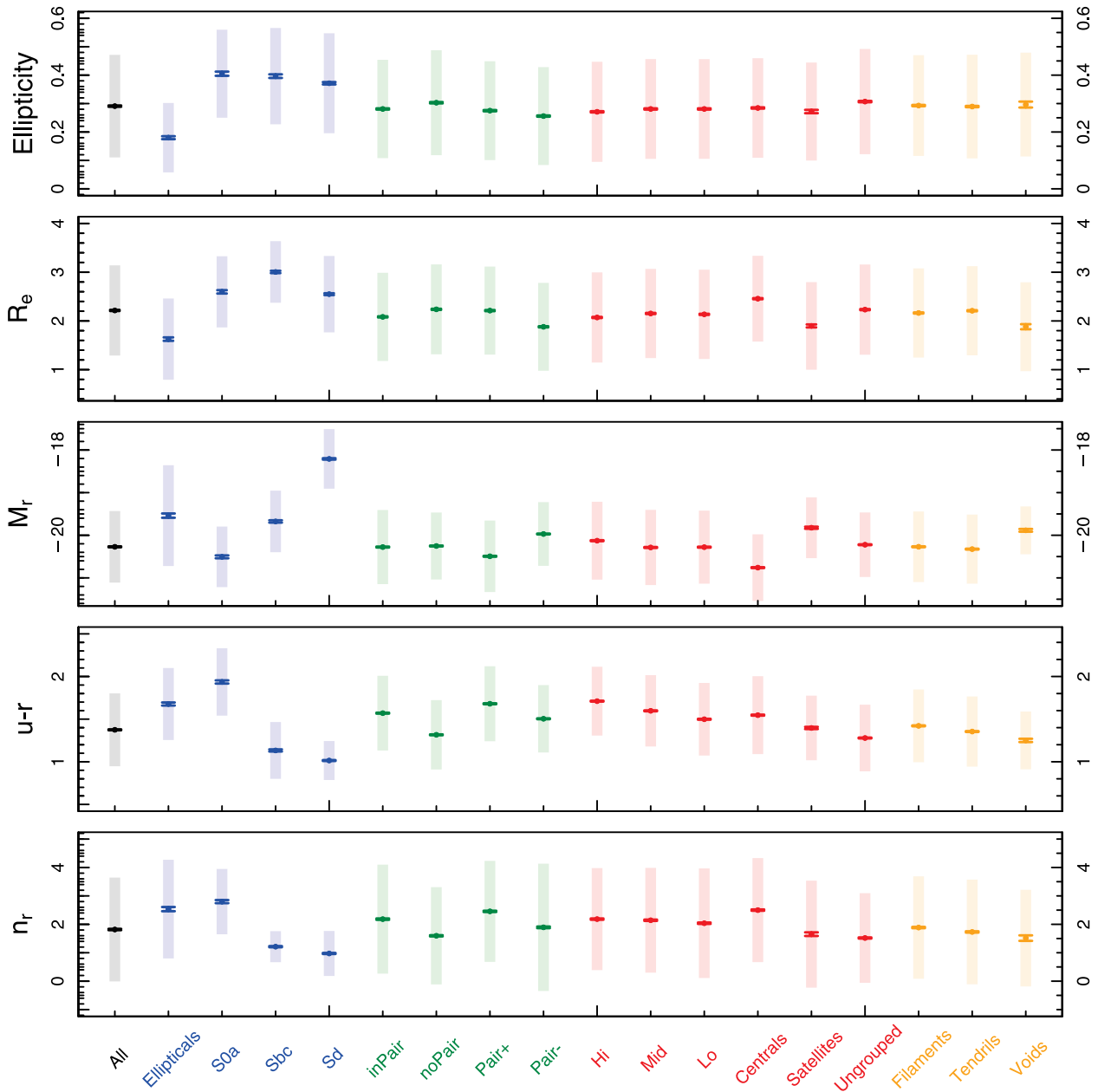


Figure 17. As with Fig. 9, but for galaxies matched to the Baldry et al. (2012) GSMF.

unaffected by large-scale structure for this higher mass matched sample, the distributions of certain galaxy types reflect the inclusion of higher masses. Central galaxies and dominant pair galaxies are now more likely to be late type, and all populations show a greater bimodality in their colour distributions; these results are consistent with the findings of Robotham et al. (2013). We further explore the

effects of controlling for mass by removing it entirely for Fig. 15, where it is shown that galaxies in environments have a tendency to be correlated in similar ways as they go to higher stellar masses. The most massive galaxies in the Universe look the same regardless of where they are. Furthermore, removing mass normalization also enhances trends in galaxy properties with structure as in Fig. 13,



**Figure 18.** As with Figs 10 and 13, but for galaxies matched to the Baldry et al. (2012) GSMF.

indicating strongly that stellar mass (or what drives stellar mass) is the dominant force in galaxy evolution. We see the most significant effect when looking at pair classifications, and it is consistent with findings in Robotham et al. (2013, 2014). A macroscopic view of our results suggests that the properties of galaxies reviewed in this work correlate most strongly with stellar mass.

The results presented in this work serve as a broad overview of how large-scale structure and environment directly impact on galaxy evolution, and serve as a broad overview of the trends of galaxies in different environments. These results motivate further study, in particular to detect mass flows within filaments by analysing the properties of spiral galaxies. This field stands to gain a much deeper understanding of the environmental mechanisms that influence galaxy evolution as more detailed surveys of gas in more distant galaxies become available with the advent of surveys such

as ASKAP DINGO, followed by the SKA. The GLSSC presents a unique opportunity to study these processes within a well-defined sample of galaxies in extremely underdense environments.

## ACKNOWLEDGEMENTS

The authors acknowledge the reviewer for their detailed and thoughtful comments on this work. MA is funded by an appointment to the NASA Postdoctoral Program at Ames Research Centre, administered by Oak Ridge Associated Universities through a contract with NASA, and acknowledges past funding from the University of Western Australia and the University of St Andrews.

GAMA is a joint European-Australasian project based around a spectroscopic campaign using the Anglo-Australian Telescope. The GAMA input catalogue is based on data taken from the Sloan

Digital Sky Survey and the UKIRT Infrared Deep Sky Survey. Complementary imaging of the GAMA regions is being obtained by a number of independent survey programmes including *GALEX* MIS, VST KiDS, VISTA VIKING, *WISE*, *Herschel*-ATLAS, GMRT, and ASKAP providing UV to radio coverage. GAMA is funded by the STFC (UK), the ARC (Australia), the AAO, and the participating institutions. The GAMA website is <http://www.gama-survey.org/>. The VISTA VIKING data used in this paper are based on observations made with ESO Telescopes at the La Silla Paranal Observatory under programme ID 179.A-2004.

## REFERENCES

- Alpaslan M. et al., 2014a, *MNRAS*, 438, 177  
 Alpaslan M. et al., 2014b, *MNRAS*, 440, L106  
 Avila-Reese V., Colín P., Gottlöber S., Firmani C., Maulbetsch C., 2005, *ApJ*, 634, 51  
 Baldry I. K., Balogh M. L., Bower R. G., Glazebrook K., Nichol R. C., Bamford S. P., Budavari T., 2006, *MNRAS*, 373, 469  
 Baldry I. K. et al., 2012, *MNRAS*, 421, 621  
 Baldry I. K. et al., 2014, *MNRAS*, 441, 2440  
 Balogh M., 2007, in Metcalfe N., Shanks T., eds, *ASP Conf. Ser. Vol. 379, Cosmic Frontiers. Astron. Soc. Pac., San Francisco*, p. 109  
 Bamford S. P. et al., 2009, *MNRAS*, 393, 1324  
 Benítez-Llambay A., Navarro J. F., Abadi M. G., Gottlöber S., Yepes G., Hoffman Y., Steinmetz M., 2013, *ApJ*, 763, L41  
 Bertin E., 2011, in Evans I. N., Accomazzi A., Mink D. J., Rots A. H., eds, *ASP Conf. Ser. Vol. 442, Astronomical Data Analysis Software and Systems XX. Astron. Soc. Pac., San Francisco*, p. 435  
 Bertin E., Arnouts S., 1996, *A&AS*, 117, 393  
 Bertin E., Mellier Y., Radovich M., Missonnier G., Didelon P., Morin B., 2002, *ASP Conf. Proc. Vol. 281*, p. 228  
 Beygu B., Kreckel K., van de Weygaert R., van der Hulst J. M., van Gorkom J. H., 2013, *AJ*, 145, 120  
 Blanton M. R., Eisenstein D., Hogg D. W., Schlegel D. J., Brinkmann J., 2005, *ApJ*, 629, 143  
 Bourne N. et al., 2012, *MNRAS*, 421, 3027  
 Bower R. G., Benson A. J., Malbon R., Helly J. C., Frenk C. S., Baugh C. M., Cole S., Lacey C. G., 2006, *MNRAS*, 370, 645  
 Brough S. et al., 2013, *MNRAS*, 435, 2903  
 Bruzual G., Charlot S., 2003, *MNRAS*, 344, 1000  
 Butcher H., Oemler A. J., 1984, *ApJ*, 285, 426  
 Calzetti D., Armus L., Bohlin R. C., Kinney A. L., Koornneef J., Storchi Bergmann T., 2000, *ApJ*, 533, 682  
 Cameron E., 2013, *Publ. Astron. Soc. Aust.*, 28, 128  
 Cautun M., van de Weygaert R., Jones B. J. T., 2012, *MNRAS*, 429, 1286  
 Chabrier G., 2003, *PASP*, 115, 763  
 Cluver M. E. et al., 2014, *ApJ*, 782, 90  
 Colberg J. M., 2007, *MNRAS*, 375, 337  
 Cooper M. C., Tremonti C. A., Newman J. A., Zabludoff A. I., 2008, *MNRAS*, 390, 245  
 Croton D. J. et al., 2005, *MNRAS*, 356, 1155  
 da Cunha E., Charlot S., Dunne L., Smith D., Rowlands K., 2011, in Tuffs R. J., Popescu C. C., eds, *Proc. IAU Symp. 284, The Spectral Energy Distribution of Galaxies. Cambridge Univ. Press, Cambridge*  
 De Propris R. et al., 2003, *MNRAS*, 342, 725  
 Doroshkevich A., Tucker D. L., Allam S., Way M. J., 2004, *A&A*, 418, 7  
 Dressler A., 1980, *ApJ*, 236, 351  
 Dressler A. et al., 1997, *ApJ*, 490, 577  
 Driver S. P., Popescu C. C., Tuffs R. J., Liske J., Graham A. W., Allen P. D., De Propris R., 2007, *MNRAS*, 379, 1022  
 Driver S. P., Popescu C. C., Tuffs R. J., Graham A. W., Liske J., Baldry I., 2008, *ApJ*, 678, L101  
 Driver S. P. et al., 2009, *Astron. Geophys.*, 50, 12  
 Driver S. P. et al., 2011, *MNRAS*, 413, 971  
 Driver S. P. et al., 2013a, *MNRAS*, 427, 3244  
 Driver S. P., Robotham A. S. G., Bland-Hawthorn J., Brown M., Hopkins A., Liske J., Phillipps S., Wilkins S., 2013b, *MNRAS*, 430, 2622  
 Duarte M., Mamon G. A., 2014, *MNRAS*, 440, 1763  
 Eardley E. et al., 2015, *MNRAS*, 448, 366  
 Ellison S. L., Simard L., Cowan N. B., Baldry I. K., Patton D. R., McConnachie A. W., 2009, *MNRAS*, 396, 1257  
 Fakhouri O., Ma C.-P., 2009, *MNRAS*, 394, 1825  
 Forero-Romero J. E., Hoffman Y., Gottlöber S., Klypin A., Yepes G., 2009, *MNRAS*, 396, 1815  
 Foster C. et al., 2012, *A&A*, 547, A79  
 Gomez P. L. et al., 2003, *ApJ*, 584, 210  
 Gunawardhana M. L. P. et al., 2013, *MNRAS*, 433, 2764  
 Hahn O., Porciani C., Carollo C. M., Dekel A., 2007, *MNRAS*, 375, 489  
 Hill D. T. et al., 2011, *MNRAS*, 412, 765  
 Hughes T. M., Cortese L., Boselli A., Gavazzi G., Davies J. I., 2013, *A&A*, 550, A115  
 Kelvin L. S. et al., 2012, *MNRAS*, 421, 1007  
 Kelvin L. S. et al., 2014, *MNRAS*, 444, 1647  
 Kreckel K., Platen E., Aragón-Calvo M. A., van Gorkom J. H., van de Weygaert R., van der Hulst J. M., Beygu B., 2012, *AJ*, 144, 16  
 Lacerna I., Rodríguez-Puebla A., Avila-Reese V., Hernández-Toledo H. M., 2014, *ApJ*, 788, 29  
 Lara-Lopez M. A. et al., 2013, *MNRAS*, 434, 451  
 Lewis I. et al., 2002, *MNRAS*, 334, 673  
 Lopes P. A. A., Ribeiro A. L. B., Rembold S. B., 2014, *MNRASL*, 437, 2430  
 Loveday J. et al., 2012, *MNRAS*, 420, 1239  
 McNaught-Roberts T. et al., 2014, *MNRAS*, 445, 2125  
 Masaki S., Lin Y.-T., Yoshida N., 2013, *MNRAS*, 436, 2286  
 Merson A. I. et al., 2013, *MNRAS*, 429, 556  
 Meyer M., 2009, in Heald G., Serra P., eds, *Proc. Panoramic Radio Astronomy: Wide-Field 1-2 GHz Research on Galaxy Evolution. Available at <http://pos.sissa.it/cgi-bin/reader/conf.cgi?confid=89>*  
 Murphy D. N. A., Eke V. R., Frenk C. S., 2011, *MNRAS*, 413, 2288  
 Norberg P. et al., 2002, *MNRAS*, 332, 827  
 Obreschkow D., Power C., Bruderer M., Bonvin C., 2013, *ApJ*, 762, 115  
 Oesch P. et al., 2010, *ApJL*, 714, L47  
 Peng C., Ho L., Impey C., Rix H.-W., 2011, *Astrophysics Source Code Library, record ascl:1104.010*  
 Peng Y.-j. et al., 2010, *ApJ*, 721, 193  
 Pettini M., Pagel B. E. J., 2004, *MNRAS*, 348, L59  
 Pimblett K. A., 2005, *MNRAS*, 358, 256  
 Popescu C. C., Tuffs R. J., Dopita M. A., Fischera J., Kylafis N. D., Madore B. F., 2011, *A&A*, 527, A109  
 Porter S. C., Raychaudhury S., Pimblett K. A., Drinkwater M. J., 2008, *MNRAS*, 388, 1152  
 Quinn P. J., Hernquist L., Fullagar D. P., 1993, *ApJ*, 403, 74  
 R Core Team 2014, *R: A Language and Environment for Statistical Computing. R Foundation for Statistical Computing, Vienna, Austria*  
 Robotham A., Wallace C., Phillipps S., De Propris R., 2006, *ApJ*, 652, 1077  
 Robotham A. et al., 2010a, *Publ. Astron. Soc. Aust.*, 27, 76  
 Robotham A., Phillipps S., De Propris R., 2010b, *MNRAS*, 403, 1812  
 Robotham A. S. G. et al., 2011, *MNRAS*, 416, 2640  
 Robotham A. S. G. et al., 2013, *MNRAS*, 431, 167  
 Robotham A. S. G. et al., 2014, *MNRAS*, 444, 3986  
 Schlegel D. J., Finkbeiner D. P., Davis M., 1998, *ApJ*, 500, 525  
 Smith A. G., Hopkins A. M., Hunstead R. W., Pimblett K. A., 2012, *MNRAS*, 422, 25  
 Somerville R. S., Gilmore R. C., Primack J. R., Domínguez A., 2012, *MNRAS*, 423, 1992  
 Springel V. et al., 2005, *Nature*, 435, 629  
 Taylor M., 2005, in Shopbell P., Britton M., Ebert R., eds, *ASP Conf. Ser. Vol. 347, Astronomical Data Analysis Software and Systems XIV. Astron. Soc. Pac., San Francisco*, p. 29  
 Taylor E. N. et al., 2011, *MNRAS*, 418, 1587  
 Taylor E. N. et al., 2014, *MNRAS*, 446, 2144  
 Toomre A., Toomre J., 1972, *ApJ*, 178, 623

Tremonti C. A. et al., 2004, *ApJ*, 613, 898  
 Tuffs R. J., Popescu C. C., Vlk H. J., Kylafrs N. D., Dopita M. A., 2004, *A&A*, 419, 821  
 Valentinuzzi T. et al., 2011, *A&A*, 536, A34  
 Wijesinghe D. B. et al., 2012, *MNRAS*, 423, 3679  
 Wolstenhulme R., Bonvin C., Obreschkow D., 2015, *ApJ*, 804, 132  
 Zehavi I. et al., 2005, *ApJ*, 630, 1  
 Zehavi I. et al., 2011, *ApJ*, 736, 59

<sup>1</sup>NASA Ames Research Centre, N232, Moffett Field, Mountain View, CA 94035, USA

<sup>2</sup>SUPA, School of Physics and Astronomy, University of St Andrews, North Haugh, St Andrews, Fife, KY16 9SS, UK

<sup>3</sup>International Centre for Radio Astronomy Research, 7 Fairway, The University of Western Australia, Crawley, Perth, WA 6009, Australia

<sup>4</sup>Max Planck Institute fuer Kernphysik, Saupfercheckweg 1, D-69117 Heidelberg, Germany

<sup>5</sup>University of the Western Cape, Robert Sobukwe Road, Bellville, Cape Town 7535, South Africa

<sup>6</sup>Institut für Astro- und Teilchenphysik, Universität Innsbruck, Technikerstraße 25, A-6020 Innsbruck, Austria

<sup>7</sup>Department of Physics and Astronomy, Macquarie University, NSW 2109, Australia

<sup>8</sup>Australian Astronomical Observatory, PO Box 915, North Ryde, NSW 1670, Australia

<sup>9</sup>School of Physics, the University of Melbourne, Parkville, VIC 3010, Australia

<sup>10</sup>School of Physics and Astronomy, The University of Nottingham, University Park, Nottingham NG7 2RD, UK

<sup>11</sup>Sydney Institute for Astronomy, School of Physics A28, University of Sydney, NSW 2006, Australia

<sup>12</sup>School of Physics, Monash University, Clayton, VIC 3800, Australia

<sup>13</sup>Research School of Astronomy and Astrophysics, The Australian National University, Canberra, ACT 2611, Australia

<sup>14</sup>Institute for Astronomy, University of Edinburgh, Royal Observatory, Blackford Hill, Edinburgh EH9 3HJ, UK

<sup>15</sup>ESO, Karl-Swarzschild-Str. 2, D-85748 Garching bei München, Germany

<sup>16</sup>Instituto de Astronomía, Universidad Nacional Autónoma de México, A.P. 70-264, 04510 México, D.F., Mexico

<sup>17</sup>Astronomy Centre, University of Sussex, Falmer, Brighton BN1 9QH, UK

<sup>18</sup>Observatories of the Carnegie Institution for Science, 813 Santa Barbara Street, Pasadena, CA 91101, USA

<sup>19</sup>Indian Institute of Science Education and Research Mohali – IISERM, Knowledge City, Sector 81, SAS Nagar, Manauli, PO 140306, India

<sup>20</sup>Institute for Computational Cosmology, Department of Physics, Durham University, South Road, Durham DH1 3LE, UK

<sup>21</sup>Institute of Cosmology and Gravitation, University of Portsmouth, Burnaby Road, Portsmouth PO1 3FX, UK

<sup>22</sup>Department of Physics and Mathematics, University of Hull, Cottingham Road, Kingston-upon-Hull, HU6 7RX, UK

<sup>23</sup>Jeremiah Horrocks Institute, University of Central Lancashire, PR1 2HE Preston, UK

<sup>24</sup>The Astronomical Institute of the Romanian Academy, Str. Cutitul de Argint 5, Bucharest 040557, Romania

This paper has been typeset from a  $\text{\TeX}/\text{\LaTeX}$  file prepared by the author.