

Central Lancashire Online Knowledge (CLoK)

Title	Evidence of substrate roughness surface induced magnetic anisotropy in Ni ₈₀ Fe ₂₀ flexible thin films
Type	Article
URL	https://clock.uclan.ac.uk/id/eprint/26046/
DOI	https://doi.org/10.1016/j.jmmm.2019.01.097
Date	2019
Citation	Beluskya, M, Lepadatu, Serban, Naylorc, J and Vopsona, MM (2019) Evidence of substrate roughness surface induced magnetic anisotropy in Ni ₈₀ Fe ₂₀ flexible thin films. Journal of Magnetism and Magnetic Materials, 478. pp. 77-83. ISSN 0304-8853
Creators	Beluskya, M, Lepadatu, Serban, Naylorc, J and Vopsona, MM

It is advisable to refer to the publisher's version if you intend to cite from the work.
<https://doi.org/10.1016/j.jmmm.2019.01.097>

For information about Research at UCLan please go to <http://www.uclan.ac.uk/research/>

All outputs in CLoK are protected by Intellectual Property Rights law, including Copyright law. Copyright, IPR and Moral Rights for the works on this site are retained by the individual authors and/or other copyright owners. Terms and conditions for use of this material are defined in the <http://clock.uclan.ac.uk/policies/>

Evidence of substrate roughness surface induced magnetic anisotropy in $\text{Ni}_{80}\text{Fe}_{20}$ flexible thin films

M. Belusky¹, S. Lepadatu², J. Naylor³, M.M. Vopson¹

¹ University of Portsmouth, SEES, Faculty of Science, Portsmouth PO1 3QL, UK

² University of Central Lancashire, Jeremiah Horrocks Institute for Mathematics, Physics and Astronomy, Preston PR1 2HE, UK

³ Kurt J Lesker Ltd, 15/16 Burgess Road, Hastings, East Sussex, TN35 4NR, UK

Abstract

Experimental and computational evidence of a surface roughness induced magnetic anisotropy in NiFe thin films coated onto substrates of various surface roughnesses is reported. Magnetic coercive fields of 15 nm NiFe thin films coated on substrates with approximately 7 nm average roughness were remarkably 233% larger than identical thin films coated onto smooth substrates with < 1 nm average roughness. The NiFe films coated onto rough substrates developed hard and easy axes, normally non-existent in NiFe Permalloy. A linear correlation of the incline angles of the hard axis hysteresis loops to the average roughness values of the individual substrates was observed, with 99% correlation level. Using a modified micromagnetics theory that incorporates the effects of surface roughness, it is shown the observed magnetic anisotropy arises due to the spatial anisotropy of the surface roughness, resulting in an effective in-plane uniaxial magnetic anisotropy with energy density up to 15 kJ/m^3 .

Keywords: Surface roughness, Flexible magnetic film, Magnetic anisotropy, NiFe, Plasma sputtering, Micromagnetics of surface roughness

1. Introduction

Thin films have been influential to human culture since the ancient past, when Egyptians used gold beating techniques to cover decorative items such as royal crowns [1]. Owing to scientific developments and discoveries of new materials, the significance of films has shifted from art to technology. In present times, most of engineering disciplines incorporate the use of thin films in various applications including thin film photovoltaics for efficient solar power conversion [2–7], thin film lithium batteries for consumer portable electronics [8,9], semiconductor thin films for micro- and nano-electronics [10], thin film optical coatings [11], thin films for high resolution displays [12] and thin films for tribological and protective coatings applications [13], to name a few.

However, one of the most successful application of thin film technologies is in digital data storage, where thin films are utilized for magnetic data storage in hard disc drive devices [14], or in solid-state data storage as memory cells made up of thin film transistors and capacitors [15]. In fact, magnetic thin films are essential not only for magnetic data storage but also for other technologies involving magnetic actuation [16], thin film inductors [17], magnetic sensing and security devices [18–20].

To achieve desired functionalities, magnetic thin films must be fabricated with precise and controllable properties such as coercive field (H_c), saturation magnetisation (M_s) and the magnetization reversal profile of the hysteresis loop. Various commonly used control methods of these parameters are doping [21], the use of suitable substrates [22] and seed layers [23] and thermal annealing [24] during and post deposition. A highly influential control mechanism of magnetism in thin films is also the actual process of thin film coating, together with the choice of deposition parameters. In the case of magnetic thin films fabricated via plasma sputtering, it has been shown that the deposition rates [25,26], substrate

temperature, bias voltage, plasma power, base pressure and process gas pressure have a significant effect on the final magnetic thin film's properties. The list of controllable parameters of magnetic thin films is further complicated when one attempts to deposit flexible magnetic thin films. Mechanical flexibility of a material is a key property that opens up new possibilities for existing and new inventions alike. Flexible thin films are already firmly established in the form of flexible solar cells [27], flexible displays [28] and flexible medical or gas monitoring sensors [29–31]. Recently there have been a number of studies of magnetic flexible thin films and their properties [32,33], in which the flexibility was achieved by depositing magnetic thin films onto flexible substrates. Magnetic properties, such as anisotropy or coercive field, often exhibit unusual characteristics in thin films compared to that of a bulk material [34]. These can arise, besides other means, from shape effects, residual stress created during the film growth or interactions of atoms at the surface. The use of flexible substrates further enhances these interfacial effects. A dependence of coercive field value on film thickness, for various ferromagnetic materials grown on a solid substrate, has been extensively described in many studies [35–37]. A low surface roughness has been linked to a small coercive field [38]. Similar to this, recent research involving magnetic thin films coated onto flexible substrates has found that both film thickness and substrate roughness play a significant role in their properties [39]. NiFe films grown on flexible substrates of different roughness values implied that rougher surfaces promote higher coercive fields of the thin film [40]. The proposed mechanism driving this effect was explained theoretically by Lepadatu using a modified Landau–Lifshitz–Gilbert (LLG) micromagnetics approach [41] and involves a surface induced magnetic anisotropy in magnetic thin films by the surface roughness of the substrate. In this paper we report additional studies of flexible NiFe thin films and we offer experimental and theoretical proof that a surface induced anisotropy is indeed responsible for the observed results.

2. Experiment

LabLine SPUTTER 5 magnetron plasma sputtering from K.J.Lesker [42] has been used to coat the $\text{Ni}_{80}\text{Fe}_{20}$ thin films onto Silicon (Si) wafer (100) solid substrate chosen as reference, and two flexible substrates: a Kapton (50 μm) and Polyvinylidene fluoride (PVDF) (110 μm), respectively. Kapton is a Silicon based polyimide with good temperature resistance up to 400 $^{\circ}\text{C}$ and popular in many applications requiring flexibility and high temperature resistance. PVDF is a flexible piezoelectric material very useful for development of functional composites including multiferroic composites. The vacuum chamber base pressure for each sample was 1.7×10^{-7} Torr and the temperature of the substrate was monitored and kept constant at 27 $^{\circ}\text{C}$ during the deposition processes. An RF plasma cleaning procedure was applied to all substrates using 50W RF power, argon gas process pressure of 10×10^{-3} Torr and 2 minutes plasma cleaning duration per substrate. All substrates were then coated with 5 nm seed layer of Chromium (Cr) for improved adhesion. The Cr seed layers were all coated using the following conditions: Argon gas process pressure set to 3×10^{-3} Torr, DC power 50W and the growth rate was measured by quartz crystal to be around 2 $\text{\AA}/\text{sec}$. Our Kurt J. Lesker plasma sputtering tool is designed to accommodate in its vacuum chamber up to four substrates that can be coated individually without venting the chamber. A carousel holding the substrates automatically rotates each substrate to the appropriate position above the magnetron target. The system can accommodate five magnetron targets (four DC including a high magnetic field magnetron and one RF), which are located at around 10 cm distance below the substrates carousel.

In our initial studies reported in [40], we coated NiFe films having the following structure: Substrate / Cr (5 nm) / NiFe (t nm) where Substrate is Si, Kapton and PVDF, respectively and the thickness variable was $t = 100$ nm, 60 nm and 15 nm, respectively. Room temperature Magneto-Optic Kerr Effect (MOKE) was used to measure magnetic hysteresis loops of all samples. Maximum field of 650 Oe was applied to drive the samples to saturation. MOKE signal fluctuation in our particular setup is under 0.1%, achieved by deploying an electro-optic

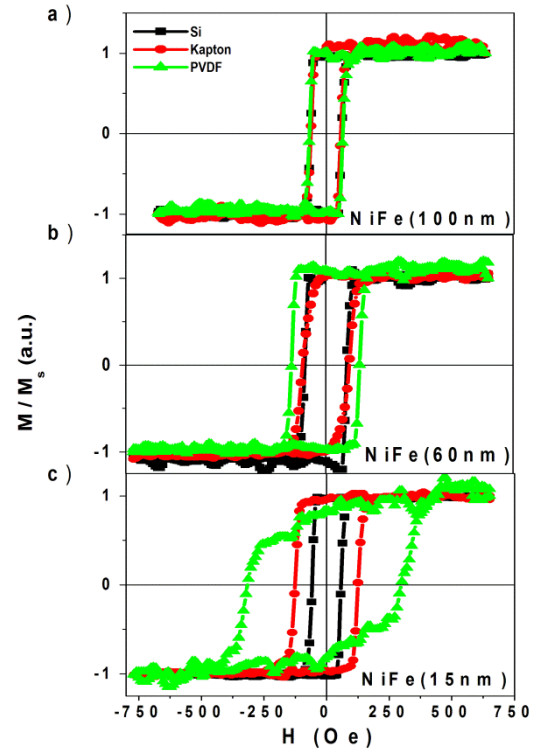


Figure 1. Comparison of magnetic hysteresis loops for NiFe a) $t = 100$ nm; b) $t = 60$ nm; c) $t = 15$ nm; for Si, Kapton and PVDF substrates.

noise reduction modulator known as “noise eater”, which allowed us to obtain hysteresis loops in a single measurement, without averaging, in less than a minute per hysteresis loop.

Figures 1.a) to 1.c) show a comparison study of magnetic hysteresis loops for 100, 60 and 15 nm NiFe films, deposited on the three aforementioned substrates. Figure 1.a) shows that 100 nm NiFe thin films display identical magnetization reversal profile and coercive fields of around 67 Oe, regardless of the type of substrate used. As the thickness of the NiFe films is reduced to 60 nm, the films coated onto Kapton and Si substrates appear to display identical behaviour, while the film coated onto PVDF substrate shows a clear increase in the coercive field to 135 Oe (see figure 1.b). Upon further decreasing the thickness of NiFe down to 15 nm, a clear trend is observed in which both NiFe films coated onto Kapton and PVDF show a significant increase in their coercive fields to 126 Oe and 306 Oe, respectively, while the coercive field of NiFe on Si remains broadly unchanged. This corresponds to 88% and 356 %, respectively enhancement of the coercive field of NiFe thin films when compared to those

deposited onto Si substrates. These initial results were connected to the substrate roughness values [40], in which it was suggested that surface roughness may be responsible for the coercive field enhancement due to a surface induced magnetic anisotropy, as shown theoretically by Lepadatu [41]. This is further supported by the thickness data that shows a total cancelation of the effect for thicker (100 nm) films in which the nano-scale substrate roughness effects are negligible, and a gradual emergence when the thickness is reduced and the surface roughness begins to dominate. A maximum effect appears to be achieved when the film thickness is of the order of magnitude of the surface roughness.

Hence, to clarify this aspect, we focus our studies on the thinner NiFe films where the surface roughness effect appears to dominate. If a surface roughness induced magnetic anisotropy is indeed responsible for the observed results, this should be identifiable in the magnetic hysteresis data via the emergence of hard axis (HA) and easy axis (EA) magnetization reversal profiles. To prove this experimentally we fabricated a new set of NiFe 15 nm thin films using the same deposition conditions as described above. However, in order to optimize the deposition process, we have varied the DC sputtering power, which resulted in a variation of the thin film growth rate from 1Å/s at 25W power to 3.8Å/s at 100W, as shown in Table 1.

Table 1. Deposition conditions and code names for the 15 nm Ni₈₀Fe₂₀ thin films.

DC sputtering Power (W)	Sample code names (Substrate = Silicon, Kapton, PVDF)	Grow rate (Å/s)
100	Substrate_100	3.8
75	Substrate_75	2.9
50	Substrate_50	1.9
25	Substrate_25	1.0

The samples structure is: Substrate / Cr (5 nm) / NiFe (15 nm), where Substrate is Si, Kapton and PVDF, respectively. Table 1 shows the samples code names and their deposition conditions used as variables. Surface morphology and substrates roughness were evaluated using a Park NX10 Atomic Force Microscope (AFM). Each measured area was 5 x 5 μm using a non-contact scanning mode and XEI software was used to process the data and to extract the average roughness values.

3. Results and discussions

All three substrates used in these studies have a very different surface roughness with average roughness values, R_a , for Si of around 2 nm, Kapton around 5 nm, and PVDF of around 8 nm, as also previously reported [40]. However, these are the values before substrate plasma cleaning procedure is deployed and we observed a surface roughness modification of the substrates after this process. Hence, we retested our substrates immediately after the plasma cleaning procedure in order to get a more accurate value of their surface roughness in the final samples. Figure 2 shows the 3D topography of our substrates after the plasma cleaning procedure, measured with an AFM in non-contact scanning mode. After plasma treatment, average roughness of silicon substrate decreased to $R_a = 0.6$ nm, flexible Kapton reduced to $R_a = 2.2$ nm

and PVDF roughness became 6.8 nm (see figure 2). A closer examination of figure 2 clearly indicates a distinct ‘wave-like’ character of PVDF substrate roughness, where the material

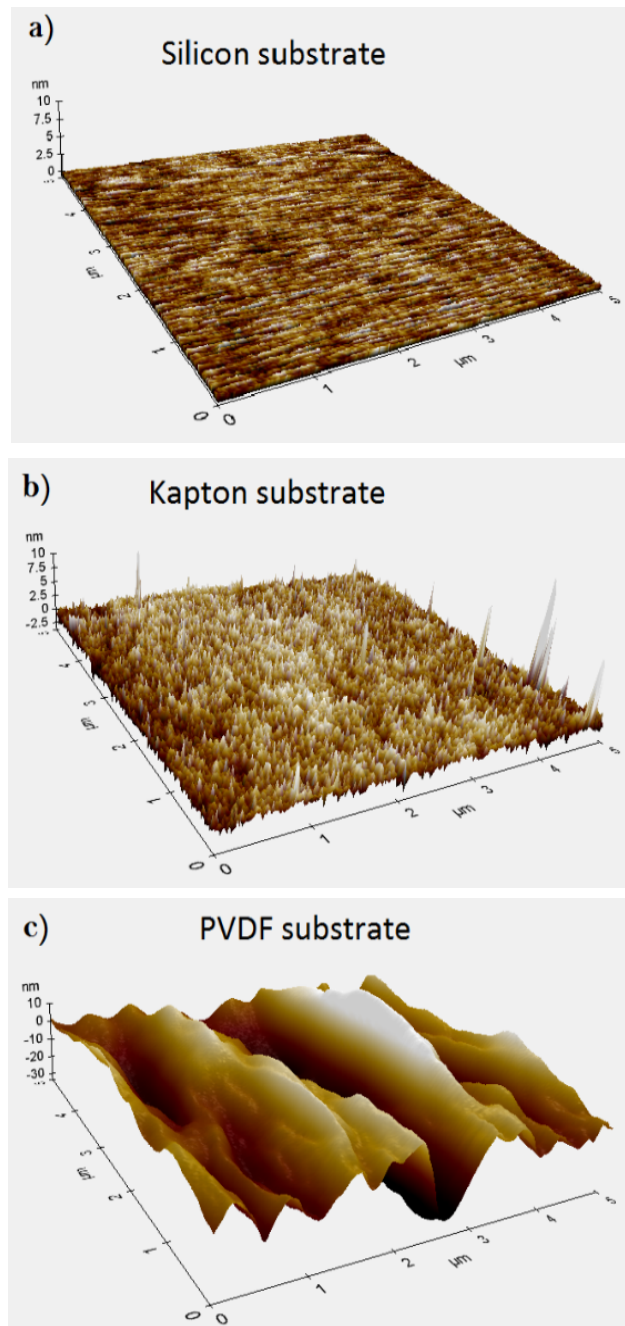


Figure 2. AFM images for all three substrates after plasma cleaning. a) Silicon; b) Kapton; c) PVDF.

surface shows a number of deep ridges not uniformly levelled and not seen in the other Kapton and Si substrates.

It is important to mention that these values are very much susceptible to the plasma cleaning process in terms of plasma power and most importantly the duration of the Ar plasma exposure. This process also affects materials in different ways depending on their structure. Solid substrates such as silicon wafer tolerate ion bombardment to a greater degree and the result is surface cleaning rather than etching. In the case of polymers, shorter cleaning times may enhance the surface properties whilst longer exposures promote damage by high-energy ions. This is not surprising as plasma cleaning of polymer type materials result in etching process, polymer chains breaking [43] significantly increasing their surface free energy [44]. Longer exposure times often lead to drastic modification of the samples and increase in surface roughness, especially in PVDF, which has a low melting temperature of around 120 °C. After the plasma treatment of the substrates, 5 nm seed layer of Cr was coated onto each substrate, followed by deposition of 15 nm of NiFe thin films at four different dc sputtering powers, as described in the previous section (see table 1), giving a total of 12 samples. Figure 3 shows the magnetic hysteresis loops obtained via MOKE measurements for all samples. Individual graphs consist of 4 loops, each relating to the sputtering power used during deposition. By rotating the sample axis 90 degrees relative to the applied magnetic field vector (see fig. 4), we were able to identify and test magnetic hysteresis response for easy axis (EA) and hard axis (HA), respectively. Interestingly, the samples sputtered onto Si substrates show no magnetic anisotropy and identical HA/EA magnetic coercive field values regardless on the sputtering power (see figures 3.a) and d)).

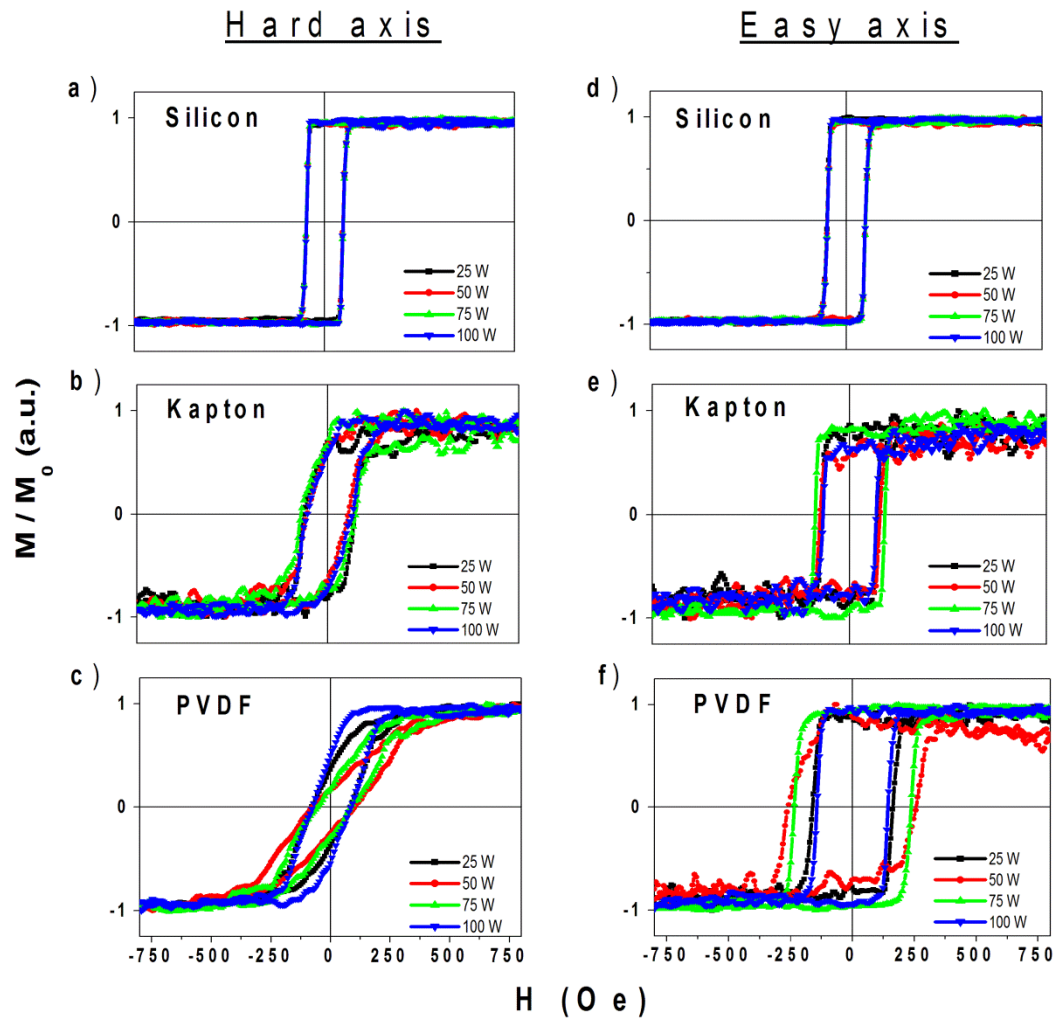


Figure 3. Hysteresis loops for 15 nm NiFe on Si, Kapton and PVDF, coated at 25W, 50W, 75W and 100W dc sputtering power. Figures a) – c) represent the HA response and figures d) –f) represent the EA hysteresis loops.

The magnetic reversal profile of NiFe (15nm) coated onto Kapton and PVDF, clearly shows a distinctive response with square hysteresis loops measured in the EA orientation and tilted loops in the HA direction. In the case of Kapton, while the magnetic coercive field increases relative to that on Si substrates, it appears that the HA loops inclinations, as well as the magnetic coercive fields are not influenced by the sputtering power (see figures 3.b) and e)).

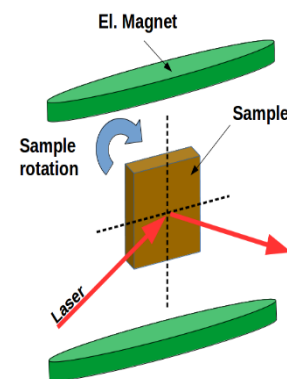


Figure 4. Sample measurement geometry for MOKE testing

The emergence of magnetic anisotropy is even more obvious for NiFe on PVDF substrates where the inclinations of the HA hysteresis loops are more pronounced and the largest coercive field values of EA hysteresis loops are 233% larger than those of identical samples coated onto Si substrates. This is exactly the expected behaviour if the substrate roughness is indeed the driving mechanism for the remarkable magnetic coercive field

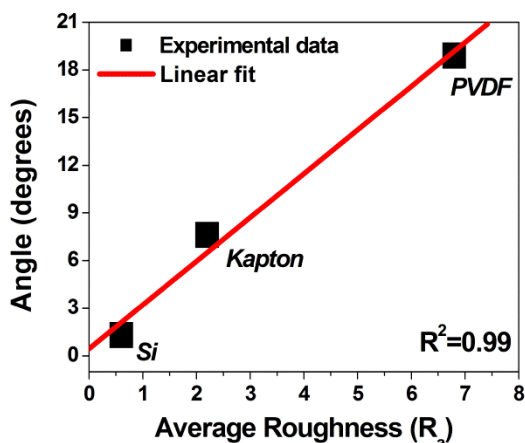


Figure 5. Roughness values of individual substrates related to the average incline angle of their corresponding HA hysteresis loops.

enhancement, due to an induced surface magnetic anisotropy. NiFe permalloy is well known soft magnetic material with very small / negligible magnetocrystalline anisotropy [45], and the underlying mechanisms are still a matter of research today [45,46]. In our case, however, the distinct anisotropy appears only in flexible substrates with large surface roughness, even

though all samples underwent identical sputtering conditions. The higher the substrate roughness, the larger the induced surface anisotropy appears to be, while for smooth Si substrates the effect vanishes completely. It is therefore a powerful argument to assume that the type of substrate, or rather its roughness, is responsible for the observed magnetic

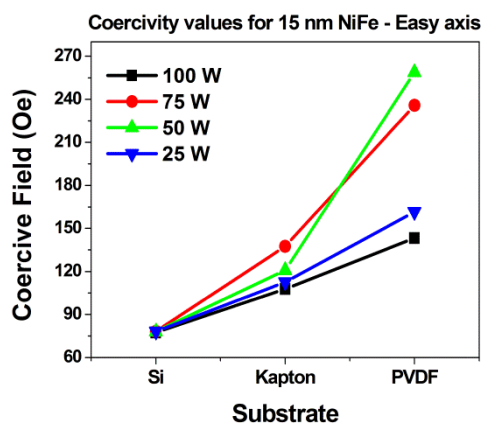


Figure 6. EA coercivity values measured for NiFe coated on Si, Kapton and PVDF substrates at different dc sputtering power. Each sputtering power produces a different H_c value, but clearly the larger the roughness, the larger the H_c .

changes and surface induced anisotropy. To further enforce this assumption, the incline angles of the HA hysteresis loops were determined and correlated to the roughness values of the individual substrates. The incline angle of a given HA hysteresis loop was taken as the

angle deviation from the vertical magnetization axis to the tangential line linking positive and negative magnetization saturation points on the HA hysteresis loops. For each substrate, we determined the inclination angle corresponding to each sputtering power and we calculated its average value. By plotting the average incline angle of the HA versus the substrate roughness we obtained a strong linear correlation, with a correlation factor of 99% (see figure 5 and figures 3.a) to c)), which is a significant indication that the surface induced magnetic anisotropy is indeed correlated to the surface roughness.

While the HA hysteresis curves display a clear correlation to the substrate roughness, their coercive fields are mostly unchanged. This is very different in the case of EA hysteresis loops (see figure 3.d)-f)), where the substrate roughness appears to have a dramatic effect on the EA magnetic coercive fields, H_c , as detailed in figure 6. The average H_c values increase by 53% for Kapton and 156% for PVDF relative to the H_c values of NiFe on Si. Examination of data in figure 6 reveals that roughness is indeed the main contributor to the increase in EA coercive field. However, for all samples the EA coercive fields are also affected by the dc sputtering power as shown in figure 6. The optimal dc sputtering power for our particular deposition system, under the sputtering conditions indicated above, appears to be in the range 50W-75W, where the largest increases in the H_c are observed. The effect of deposition power, as well as many other variables involved in sputtering process, is known to greatly influence the final thin film properties. For example, Tang et al. have performed similar experiments in order to study the effects of sputtering process pressure on magnetic properties of NiFe films. They found that coercive fields significantly decrease after lowering the Ar gas pressure and deduced that higher accelerating voltages, which are needed to keep the power values fixed after the drop in the process pressure, was the reason for higher deposition rates and fewer defects [47]. In our experiment these effects are ruled out, as the argon pressure was maintained constant at 3×10^{-3} Torr, and the power was also fixed to one of the predetermined values during the coating process. Grain size effects have been shown to

promote significant changes in the coercive fields of magnetic thin films, with coercive fields increasing proportional to the grain sizes [25,48]. In our case, this mechanism is also ruled out as our samples show an increase in the coercive field in thinner films, corresponding to smaller grain sizes. Moreover, a faster growth rate is associated with larger grains and higher coercive fields [25]. In this study, by fabricating samples at variable sputtering power / growth rates (see table 1), we were able to once again rule out the grain size effect as a possible explanation of our results since samples coated at highest sputtering power (100W) and fastest growth rates (3.8Å/s) displayed smaller coercive fields than samples coated at lower sputtering powers / growth rates (see figure 6). In the next section we provide theoretical support to our conclusions via micromagnetic modelling of our results.

4. Theoretical approach

To analyse the experimental results and the origin of the observed magnetic anisotropy, micromagnetics computations have been used, where surface roughness is incorporated using an effective field model proposed previously [41]. Within this formulation roughness is treated as a perturbation of the magnetostatic energy on a smooth structure, resulting in a configurational anisotropy, which can be extracted as a separate energy density term. Thus if V is the smooth magnetic body without physical roughness, micromagnetics simulations on the body V are performed by including the effective field $\mu_0\mathbf{H} = -\partial\varepsilon/\partial\mathbf{M}$, where ε is the roughness energy density shown in equation 1.

$$\varepsilon(\mathbf{r}_0) = \varepsilon_x(\mathbf{r}_0)m_x^2 + \varepsilon_y(\mathbf{r}_0)m_y^2 + \varepsilon_z(\mathbf{r}_0)m_z^2 \quad (\mathbf{r}_0 \in V) \quad (1)$$

Here $\mathbf{m} = \mathbf{M}/|\mathbf{M}|$ is the magnetisation unit direction vector, and the three orthogonal roughness energy density terms are given in equation 2,

$$\varepsilon_i(\mathbf{r}_0) = \frac{\mu_0 M_S^2}{2} \iiint_{\mathbf{r} \in V} N_{ii}(\mathbf{r} - \mathbf{r}_0) G(\mathbf{r}, \mathbf{r}_0) d\mathbf{r} \quad (\mathbf{r}_0 \in V), \quad i = x, y, z$$

(2)

where

$$G(\mathbf{r}, \mathbf{r}_0) = \begin{cases} \frac{|V|}{|V_R|} - 1 & \mathbf{r} \wedge \mathbf{r}_0 \in V_R \\ -1 & \mathbf{r} \vee \mathbf{r}_0 \in V - V_R \end{cases} \quad (3)$$

In equations 2 and 3, $V_R \subset V$ is the magnetic body with physical roughness and volume $|V_R| < |V|$, M_S is the saturation magnetisation, and N_{ii} ($i = x, y, z$) are the diagonal components of the demagnetizing tensor [49].

For isotropic surface roughness the resulting configurational anisotropy has an easy axis perpendicular to the plane [41]. On the other hand, if the surface roughness profiles are anisotropic, it is expected symmetry axes will be observed in the plane of the sample. This is most readily observed for the NiFe film on the PVDF substrate of figure 2, where a strongly anisotropic roughness profile is obtained from AFM scans,

forming an oriented wavy structure in the plane. By incorporating the roughness profile in the effective field model, the in-plane roughness energy density was computed as a function of magnetisation angle θ , shown in figure 7. This is described very well by the uniaxial anisotropy formula $K \sin^2(\theta)$, where $K \cong 15.5 \text{ kJ/m}^3$, with the easy axis aligned along the wavy surface roughness profile, in agreement with the results shown in figure 3. The strength

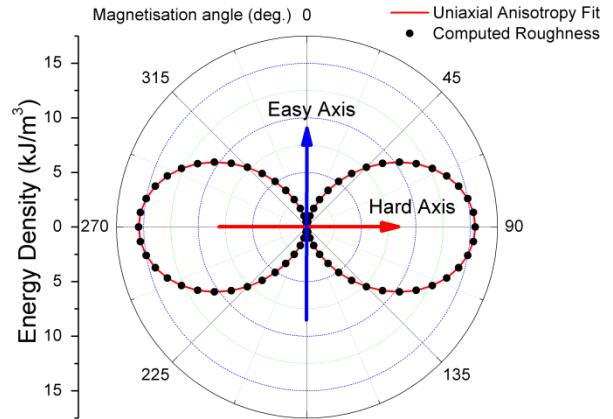


Figure 7. Computed in-plane roughness energy density for the PVDF \ NiFe sample with 6.8 nm roughness, where the oriented physical surface roughness obtained from AFM scans was imported into the simulations. The results are fitted using the uniaxial anisotropy formula with constant 15.5 kJ/m^3 .

of this contribution is comparable to that of materials with magneto-crystalline anisotropy, e.g. 6 kJ/m^3 for high quality single-crystal Ni films [50]. Since NiFe has no magneto-crystalline anisotropy, the observed uniaxial anisotropy in figure 3 is attributed to the configurational anisotropy resulting from the anisotropic surface roughness profile. Moreover, the strength of this configurational anisotropy is directly proportional to the roughness level, in agreement with the results shown in figures 3 and 6, and verified in a previous work as a function of both film thickness and roughness level [40]. The out-of-plane configurational anisotropy persists in the model, however the strength of this is only 2% of the in-plane anisotropy so it is negligible.

5. Conclusion

NiFe thin films on Si, and flexible NiFe thin films on Kapton and PVDF substrates were successfully fabricated by magnetron plasma sputtering technique and their magnetic properties measured experimentally. NiFe films of variable thickness from 15 nm to 100 nm showed an emergent effect in which their coercive fields gradually increased in thinner films and remained broadly unchanged in 100 nm thin films. The effect was more pronounced for flexible, rougher substrates, indicating that roughness of a substrate influences magnetic coercivity and the anisotropy of the film. We hypothesized that the observed effect was due to a surface induced magnetic anisotropy. This hypothesis was then experimentally confirmed by fabricating 15 nm NiFe thin films deposited on Silicon, Kapton and PVDF. We found that the coercive fields increase in line with the roughness of substrates. In addition, a hard axis and easy axis emerged only in 15 nm thin films deposited onto flexible rough substrates. Identical 15 nm NiFe films on Si substrates showed no magnetic anisotropy and no variation of the coercive fields. It is important to state that our samples were grown under no external magnetic field, they were not annealed or otherwise treated in any way that could explain the

emergence of the magnetic anisotropy. Theoretical simulations using Lepadatu's model of the surface roughness effect also supported our conclusions. The ability to use surface roughness to tune the properties of magnetic thin films is of great importance as it offers more versatility in the fabrication of complex nano-structured sensors and devices based on magnetic thin films, and we hope that this work will stimulate future studies in this area.

Acknowledgments

The authors would like to acknowledge the financial support to this work received from Kurt J. Lesker Ltd and the University of Portsmouth via a PhD studentship funding.

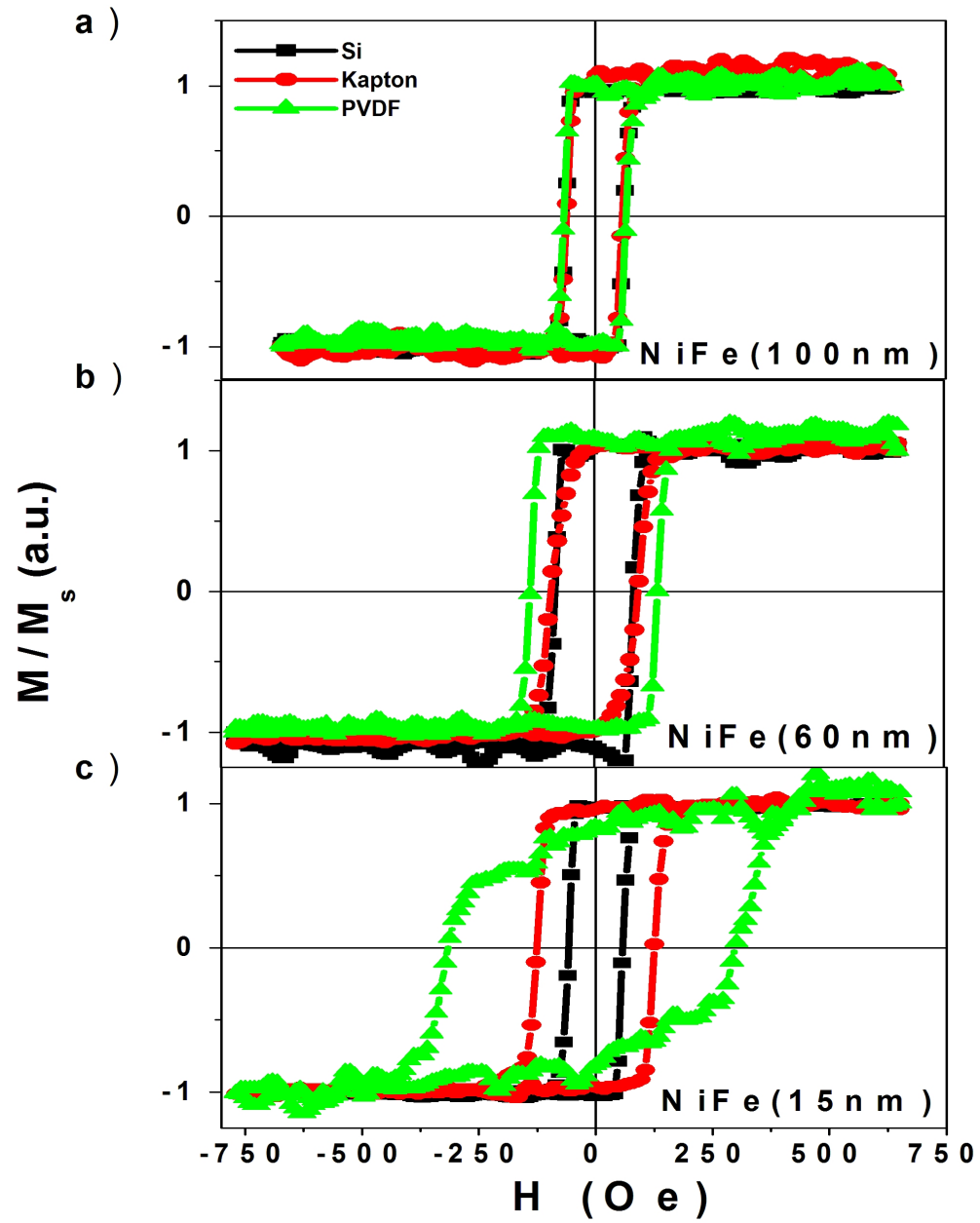
References

- [1] M. Ohring, *Materials Science of Thin Films*, 2nd ed. edition, Academic Press, 2014.
- [2] S. Masudy-Panah, S. Zhuk, H.R. Tan, X. Gong, G.K. Dalapati, Palladium nanostructure incorporated cupric oxide thin film with strong optical absorption, compatible charge collection and low recombination loss for low cost solar cell applications, *Nano Energy*. 46 (2018) 158–167. doi:10.1016/j.nanoen.2018.01.050.
- [3] H. Song, X. Zhan, D. Li, Y. Zhou, B. Yang, K. Zeng, J. Zhong, X. Miao, J. Tang, Rapid thermal evaporation of Bi₂S₃ layer for thin film photovoltaics, *Sol. Energy Mater. Sol. Cells*. 146 (2016) 1–7. doi:10.1016/j.solmat.2015.11.019.
- [4] J. Lindahl, J. Keller, O. Donzel-Gargand, P. Szaniawski, M. Edoff, T. Törndahl, Deposition temperature induced conduction band changes in zinc tin oxide buffer layers for Cu(In,Ga)Se₂ solar cells, *Sol. Energy Mater. Sol. Cells*. 144 (2016) 684–690. doi:10.1016/j.solmat.2015.09.048.
- [5] F.J. Willars-Rodríguez, I.R. Chávez-Urbiola, M.A. Hernández-Landaverde, P. Vorobiev, R. Ramírez-Bon, Y.V. Vorobiev, Effects of tin-doping on cadmium sulfide (CdS:Sn) thin-films grown by light-assisted chemical bath deposition process for solar photovoltaic cell, *Thin Solid Films*. 653 (2018) 341–349. doi:10.1016/j.tsf.2018.03.046.
- [6] M. Smeets, K. Wilken, K. Bittkau, H. Aguas, L. Pereira, E. Fortunato, R. Martins, V. Smirnov, Flexible thin film solar cells on cellulose substrates with improved light management, *Phys. Status Solidi A*. 214 (n.d.) 1700070. doi:10.1002/pssa.201700070.
- [7] P.K. Mohseni, G. Lawson, A. Adronov, R.R. LaPierre, Hybrid GaAs-Nanowire/Carbon-Nanotube Flexible Photovoltaics, *IEEE J. Sel. Top. Quantum Electron*. 17 (2011) 1070–1077. doi:10.1109/JSTQE.2010.2048097.
- [8] L. Li, S. Liu, H. Zhou, Q. Lei, K. Qian, All solid-state thin-film lithium-ion battery with Ti/ZnO/LiPON/LiMn₂O₄/Ti structure fabricated by magnetron sputtering, *Mater. Lett*. 216 (2018) 135–138. doi:10.1016/j.matlet.2017.12.131.

- [9] Y. Matsuda, N. Kuwata, J. Kawamura, Thin-film lithium batteries with 0.3–30 μm thick LiCoO₂ films fabricated by high-rate pulsed laser deposition, *Solid State Ion.* 320 (2018) 38–44. doi:10.1016/j.ssi.2018.02.024.
- [10] Y. Shacham-Diamand, T. Osaka, Y. Okinaka, A. Sugiyama, V. Dubin, 30years of electroless plating for semiconductor and polymer micro-systems, *Microelectron. Eng.* 132 (2015) 35–45. doi:10.1016/j.mee.2014.09.003.
- [11] A. Piegari, F. Flory, eds., *Optical Thin Films and Coatings: From Materials to Applications*, Woodhead Publishing, Cambridge, UK, 2013.
- [12] M. Nakata, Y. Nakajima, H. Tsuji, T. Takei, Y. Fujisaki, T. Yamamoto, High Performance oxide thin-film transistor for large-screen, high-resolution organic light-emitting diode display, in: 2016 IEEE Ind. Appl. Soc. Annu. Meet., 2016: pp. 1–5. doi:10.1109/IAS.2016.7731901.
- [13] D.-S. Oh, K.-H. Kang, H.-J. Kim, J.-K. Kim, M.-S. Won, D.-E. Kim, Tribological characteristics of micro-ball bearing with V-shaped grooves coated with ultra-thin protective layers, *Tribol. Int.* 119 (2018) 481–490. doi:10.1016/j.triboint.2017.11.014.
- [14] Y. Jing, H. Luo, P. Huang, L. Qin, U-type piezoelectric thin-film microactuator for hard disk drives, *IEEE Trans. Magn.* 41 (2005) 4309–4314. doi:10.1109/TMAG.2005.854235.
- [15] S.-W. Jung, B.S. Na, I.-K. You, J.B. Koo, B.-D. Yang, J.-M. Oh, Inkjet-printed organic thin-film transistor and antifuse capacitor for flexible one-time programmable memory applications, *J. Korean Phys. Soc.* 64 (2014) 74–78. doi:10.3938/jkps.64.74.
- [16] J. Shi, J. Zhu, L. Yin, H. Jiang, C. Lu, X. Gao, X. Bao, J. Li, The Study of Fe₈₃Ga₁₇ Films act as Magnetostrictive Actuator on PZT Substrate, *IEEE Trans. Magn.* 53 (2017) 1–4. doi:10.1109/TMAG.2017.2716405.
- [17] H. Wu, H. Yu, High frequency magnetic thin film inductor integrated on flexible organic substrates, in: 2017 IEEE Int. Magn. Conf. INTERMAG, 2017: pp. 1–1. doi:10.1109/INTMAG.2017.8007781.
- [18] D.N. Kossyvakis, S.G. Vassiliadis, C.G. Vossou, E.E. Mangiorou, K.I. Prekas, S.M. Potirakis, A wearable magnetic sensing device for identifying the presence of static magnetic fields, *Measurement.* 109 (2017) 44–50. doi:10.1016/j.measurement.2017.05.044.
- [19] N.N. Mai-Khanh, T. Iizuka, S. Nakajima, K. Asada, High-sensitivity micro-magnetic probe for the applications of safety and security, in: 2017 7th Int. Conf. Integr. Circuits Des. Verification ICDV, 2017: pp. 10–15. doi:10.1109/ICDV.2017.8188628.
- [20] N.H. Toudjien, B. Bendahmane, M.L. Zeggar, F. Mansour, M.S. Aida, SnO₂ thin film synthesis for organic vapors sensing at ambient temperature, *Sens. Bio-Sens. Res.* 11 (2016) 52–57. doi:10.1016/j.sbsr.2016.11.001.
- [21] Y. Zhang, J. Qi, Y. Wang, Y. Tian, J. Zhang, T. Hu, M. Wei, Y. Liu, J. Yang, Tuning magnetic properties of BiFeO₃ thin films by controlling Mn doping concentration, *Ceram. Int.* 44 (2018) 6054–6061. doi:10.1016/j.ceramint.2017.12.230.
- [22] K. Sun, Y. Dai, Y. Yang, Z. Yu, H. Liu, X. Jiang, Z. Lan, Influence of substrate type on the property of nickel–zinc ferrite thin films, *Ceram. Int.* 42 (2016) 3028–3032. doi:10.1016/j.ceramint.2015.10.089.
- [23] J. Sagar, C. Yu, C. Pelter, J. Wood, L. Lari, A. Hirohata, K. O’Grady, Effect of Seed Layers on Polycrystalline Co₂FeSi Thin Films, *IEEE Trans. Magn.* 48 (2012) 4006–4009. doi:10.1109/TMAG.2012.2202890.
- [24] Y. Kumar, J. Tripathi, S. Tripathi, D. Kumar, R. Bisen, K.C. Ugochukwu, A. Sharma, Influence of annealing on the structural and magnetic properties of Fe thin film Sandwiched between Au and Si, *Vacuum.* 153 (2018) 221–224. doi:10.1016/j.vacuum.2018.04.018.
- [25] M. Vopsaroiu, G.V. Fernandez, M.J. Thwaites, J. Anguita, P.J. Grundy, K. O’Grady, Deposition of polycrystalline thin films with controlled grain size, *J. Phys. Appl. Phys.* 38 (2005) 490. doi:10.1088/0022-3727/38/3/022.
- [26] M. Vopsaroiu, M. Georgieva, P.J. Grundy, M.J. Thwaites, K. O’Grady, Growth rate effects in soft CoFe films, in: INTERMAG Asia 2005 Dig. IEEE Int. Magn. Conf. 2005, 2005: pp. 45–46. doi:10.1109/INTMAG.2005.1463451.
- [27] L. Li, S. Zhang, Z. Yang, E.E.S. Berthold, W. Chen, Recent advances of flexible perovskite solar cells, *J. Energy Chem.* 27 (2018) 673–689. doi:10.1016/j.jechem.2018.01.003.
- [28] M. Nakata, G. Motomura, Y. Nakajima, T. Takei, H. Tsuji, H. Fukagawa, T. Shimizu, T. Tsuzuki, Y. Fujisaki, T. Yamamoto, Development of flexible displays using back-channel-etched In–Sn–Zn–O thin-film

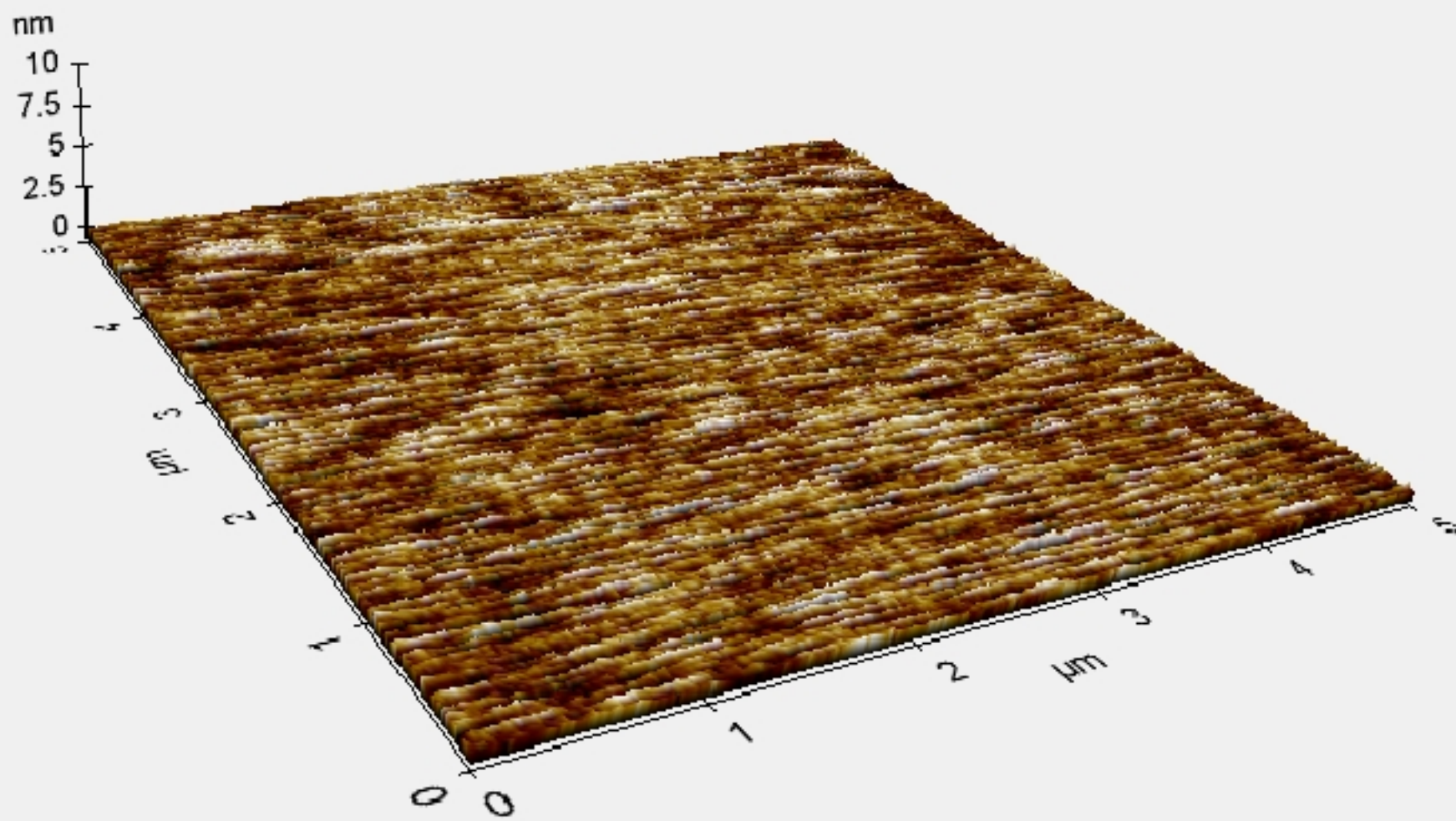
- transistors and air-stable inverted organic light-emitting diodes, *J. Soc. Inf. Disp.* 24 (n.d.) 3–11. doi:10.1002/jsid.408.
- [29] S. Saritas, M. Kundakci, O. Coban, S. Tuzemen, M. Yildirim, Ni: Fe₂O₃, Mg: Fe₂O₃ and Fe₂O₃ thin films gas sensor application, *Phys. B Condens. Matter.* 541 (2018) 14–18. doi:10.1016/j.physb.2018.04.028.
- [30] D. Maji, S. Das, Integrated Flexible Thin Film Sensor Around Angiographic Catheter for Flow Detection, *Procedia Technol.* 27 (2017) 221–223. doi:10.1016/j.protcy.2017.04.093.
- [31] A. Paliwal, A. Sharma, M. Tomar, V. Gupta, Magneto-optical properties of BiFeO₃ thin films using surface plasmon resonance technique, *Phys. B Condens. Matter.* 448 (2014) 120–124. doi:10.1016/j.physb.2014.02.031.
- [32] P. Taptimthong, J. Rittinger, M.C. Wurz, L. Rissing, Flexible Magnetic Writing / Reading System: Polyimide Film as Flexible Substrate, *Procedia Technol.* 15 (2014) 230–237. doi:10.1016/j.protcy.2014.09.076.
- [33] L.Y. Fetisov, I.A. Baraban, Y.K. Fetisov, D.A. Burdin, M.M. Vopson, Nonlinear magnetoelectric effects in flexible composite ferromagnetic – Piezopolymer structures, *J. Magn. Magn. Mater.* 441 (2017) 628–634. doi:10.1016/j.jmmm.2017.06.013.
- [34] J.M.D. Coey, *Magnetism and Magnetic Materials*, Cambridge University Press, Cambridge, 2010.
- [35] S.K. Chen, F.T. Yuan, S.N. Hsiao, H.C. Chang, C.Y. Liou, W.C. Chang, Thickness dependence of longitudinal coercivity in Fe–Pt–Al thin films, *J. Magn. Magn. Mater.* 282 (2004) 198–201. doi:10.1016/j.jmmm.2004.04.045.
- [36] T. Shima, K. Takahashi, Y.K. Takahashi, K. Hono, G.Q. Li, S. Ishio, High coercivity and magnetic domain observation in epitaxially grown particulate FePt thin films, *J. Magn. Magn. Mater.* 266 (2003) 171–177. doi:10.1016/S0304-8853(03)00468-2.
- [37] Y. Cao, C. Zhou, Dependence of coercivity on ferromagnetic layer thickness in FeNiCr/Cr bilayers, *J. Magn. Magn. Mater.* 369 (2014) 5–8. doi:10.1016/j.jmmm.2014.06.012.
- [38] S. Iwatsubo, T. Takahashi, M. Nao, Effect of surface roughness on magnetic properties of Fe films deposited by dual ion beam sputtering, *Thin Solid Films.* 343–344 (1999) 67–70. doi:10.1016/S0040-6090(98)01705-2.
- [39] H. Xie, L. Pan, X. Cheng, Z. Zhu, H. Feng, J. Wang, Q. Liu, Effect of substrate roughness on the magnetic properties of CoFeB films, *J. Magn. Magn. Mater.* 461 (2018) 19–22. doi:10.1016/j.jmmm.2018.04.046.
- [40] M.M. Vopson, J. Naylor, T. Saengow, E.G. Rogers, S. Lepadatu, Y.K. Fetisov, Development of flexible Ni₈₀Fe₂₀ magnetic nano-thin films, *Phys. B Condens. Matter.* 525 (2017) 12–15. doi:10.1016/j.physb.2017.09.005.
- [41] S. Lepadatu, Effective field model of roughness in magnetic nano-structures, *J. Appl. Phys.* 118 (2015) 243908. doi:10.1063/1.4939093.
- [42] Kurt J. Lesker Company | Physical Vapor Deposition Systems | Vacuum Science Is Our Business, (n.d.). <https://www.lesker.com/newweb/ped/physical-vapor-deposition-systems.cfm> (accessed June 25, 2018).
- [43] T.Y. Hin, C. Liu, P.P. Conway, Surface characterisation of plasma treated flexible substrates for waveguide-on-flex application, *Surf. Coat. Technol.* 203 (2009) 3741–3749. doi:10.1016/j.surfcoat.2009.06.015.
- [44] A. Bouhamed, A.M. Kia, S. Naifar, V. Dzhagan, C. Müller, D.R.T. Zahn, S. Choura, O. Kanoun, Tuning the adhesion between polyimide substrate and MWCNTs/epoxy nanocomposite by surface treatment, *Appl. Surf. Sci.* 422 (2017) 420–429. doi:10.1016/j.apsusc.2017.05.177.
- [45] D.C.M. Rodrigues, A.B. Klautau, A. Edström, J. Rusz, L. Nordström, M. Pereiro, B. Hjörvarsson, O. Eriksson, Magnetic anisotropy in Permalloy: hidden quantum mechanical features, *ArXiv170205414 Cond-Mat* (2017). <http://arxiv.org/abs/1702.05414> (accessed June 13, 2018).
- [46] L.F. Yin, D.H. Wei, N. Lei, L.H. Zhou, C.S. Tian, G.S. Dong, X.F. Jin, L.P. Guo, Q.J. Jia, R.Q. Wu, Magnetocrystalline anisotropy in permalloy revisited, *Phys. Rev. Lett.* 97 (2006) 067203. doi:10.1103/PhysRevLett.97.067203.
- [47] X.-L. Tang, H. Su, H.-W. Zhang, Z.-Y. Zhong, Y.-L. Jing, Improving the morphological and magnetic properties of permalloy films by adopting ultra-low-pressure sputtering, *Thin Solid Films.* 550 (2014) 616–620. doi:10.1016/j.tsf.2013.11.005.
- [48] M. Vopsariou, M. Georgieva, P.J. Grundy, G. Vallejo Fernandez, S. Manzoor, M.J. Thwaites, K. O’Grady, Preparation of high moment CoFe films with controlled grain size and coercivity, *J. Appl. Phys.* 97 (2005) 10N303. doi:10.1063/1.1855276.

- [49] A. Newell, W. Williams, D. Dunlop, A generalization of the demagnetizing tensor for nonuniform magnetization, *J. Geophys. Res.* 98 (1993) 9551–9555. doi:10.1029/93JB00694.
- [50] E. Secemski, J.C. Anderson, Magnetic anisotropy in single-crystal nickel films, *J. Phys. Appl. Phys.* 4 (1971) 574. doi:10.1088/0022-3727/4/4/316.



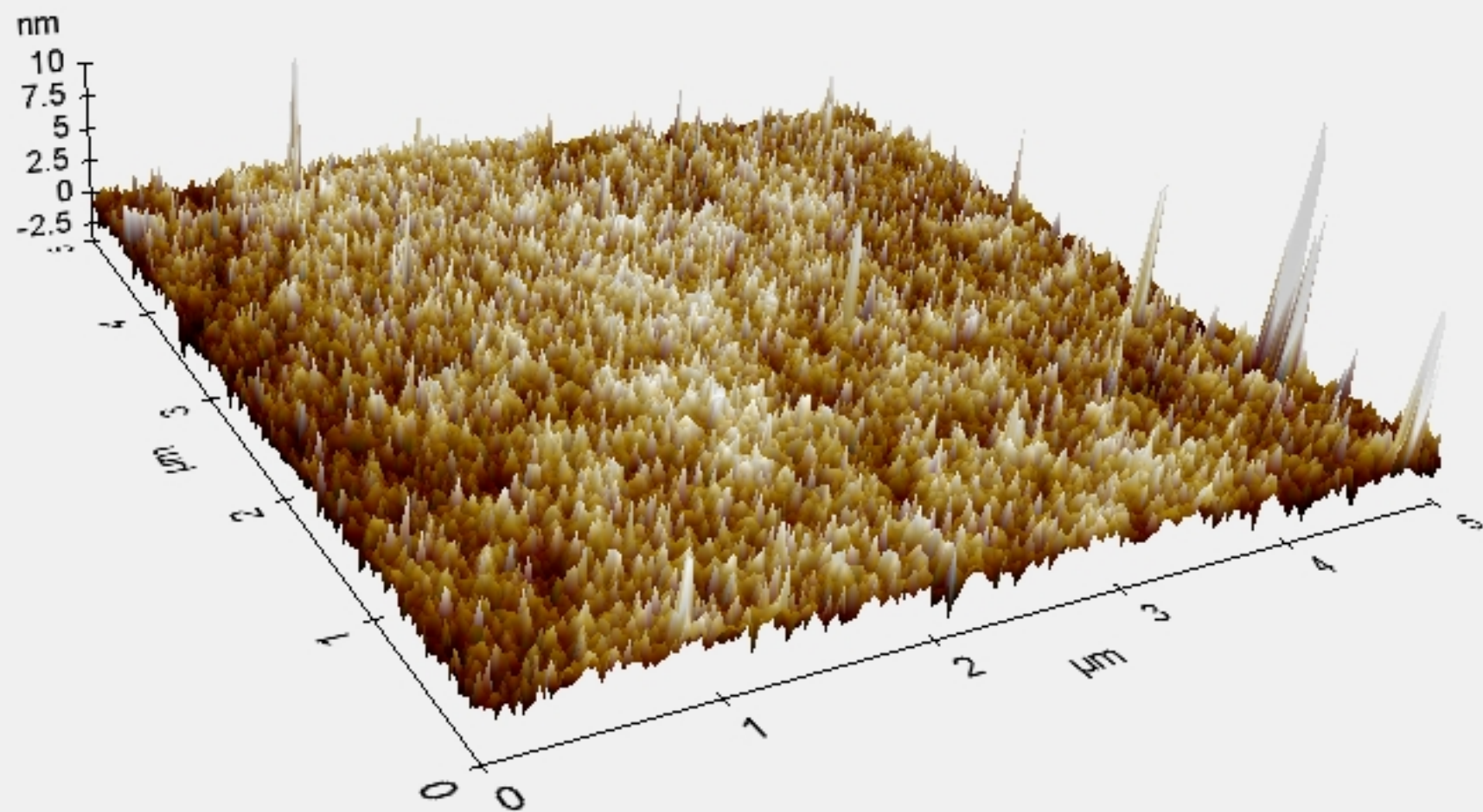
a)

Silicon substrate



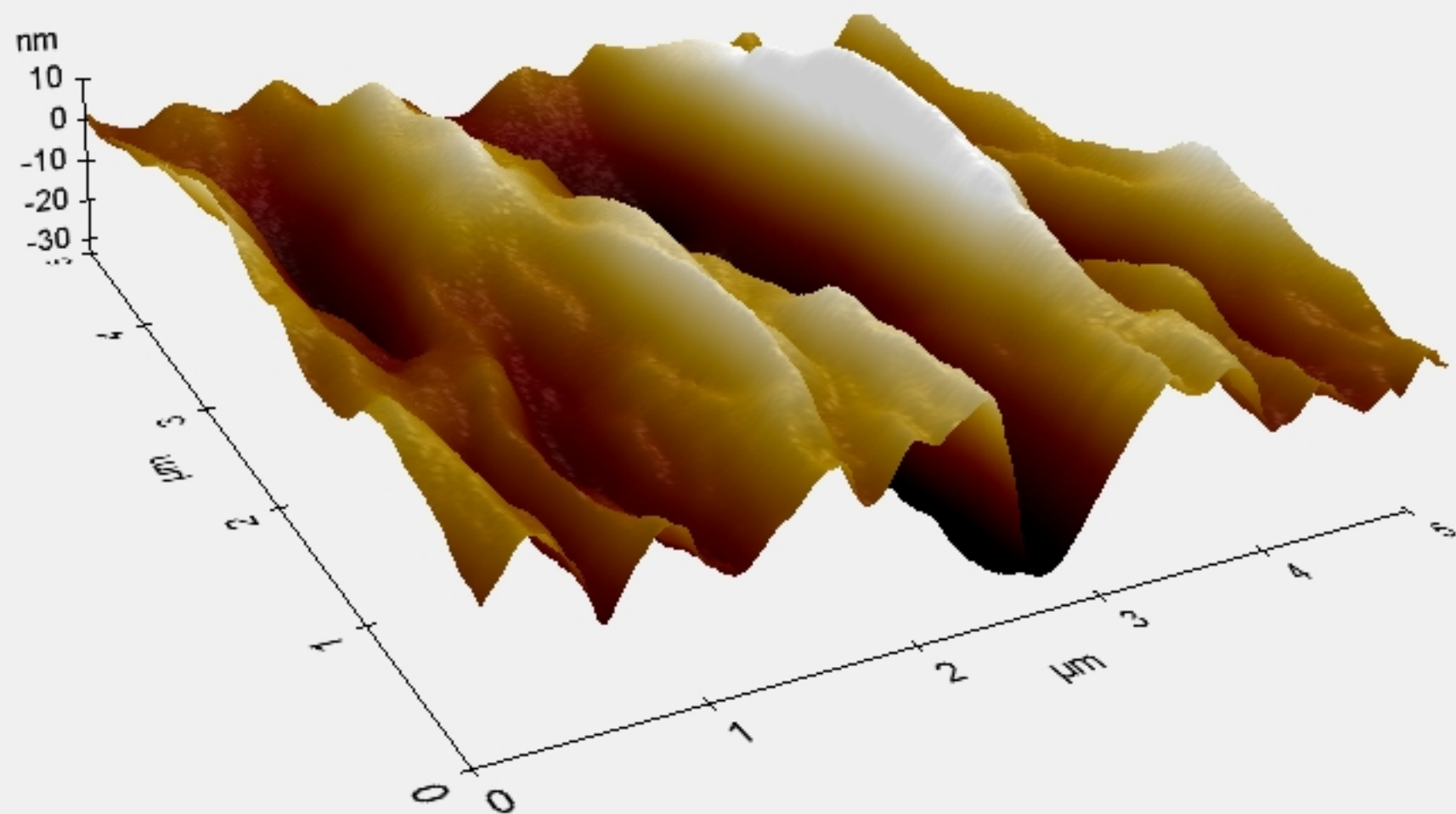
b)

Kapton substrate



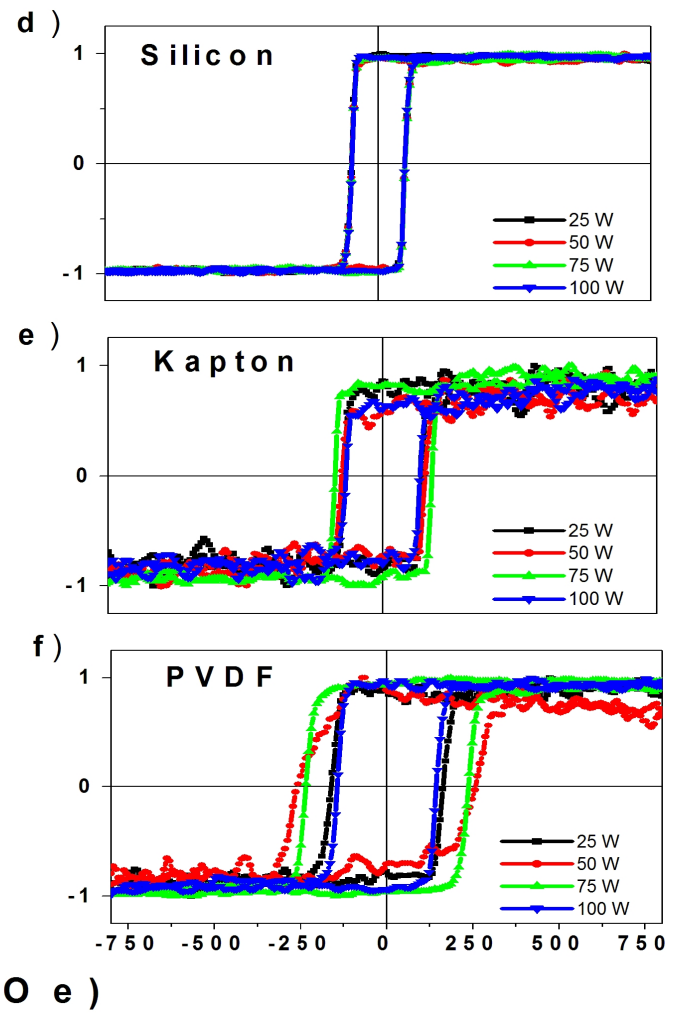
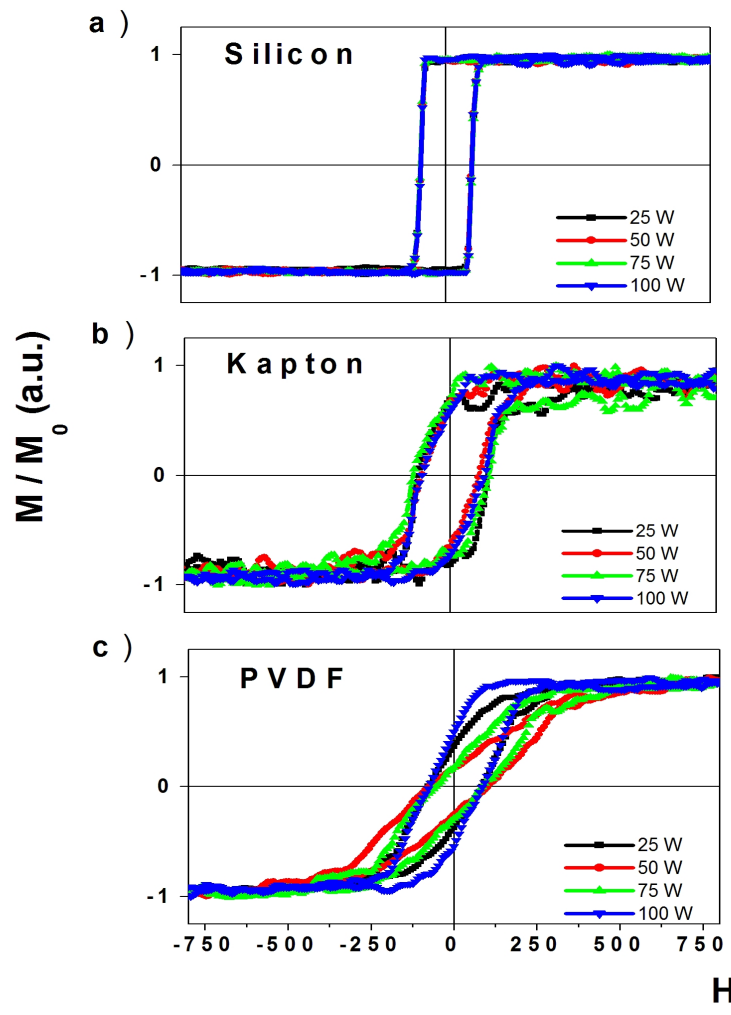
c)

PVDF substrate

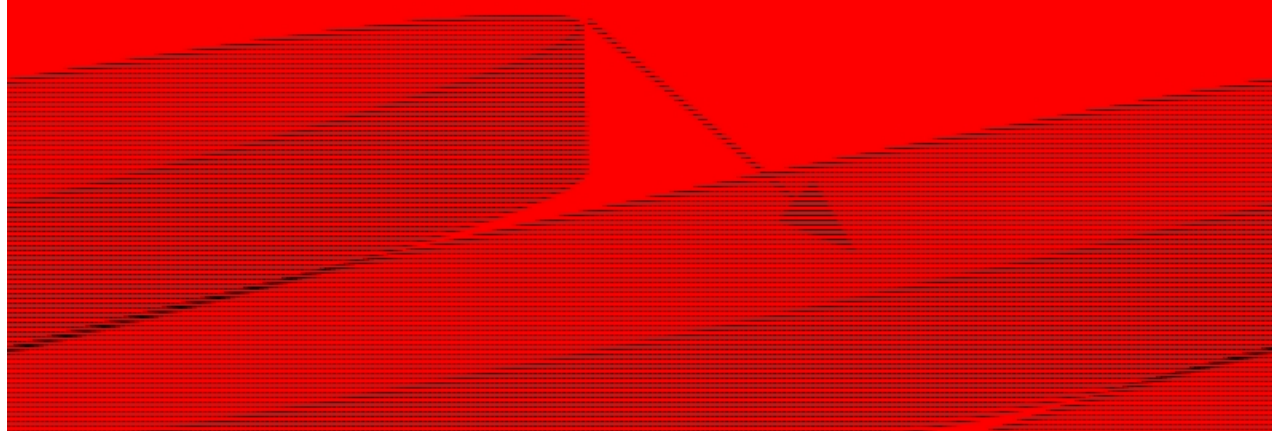


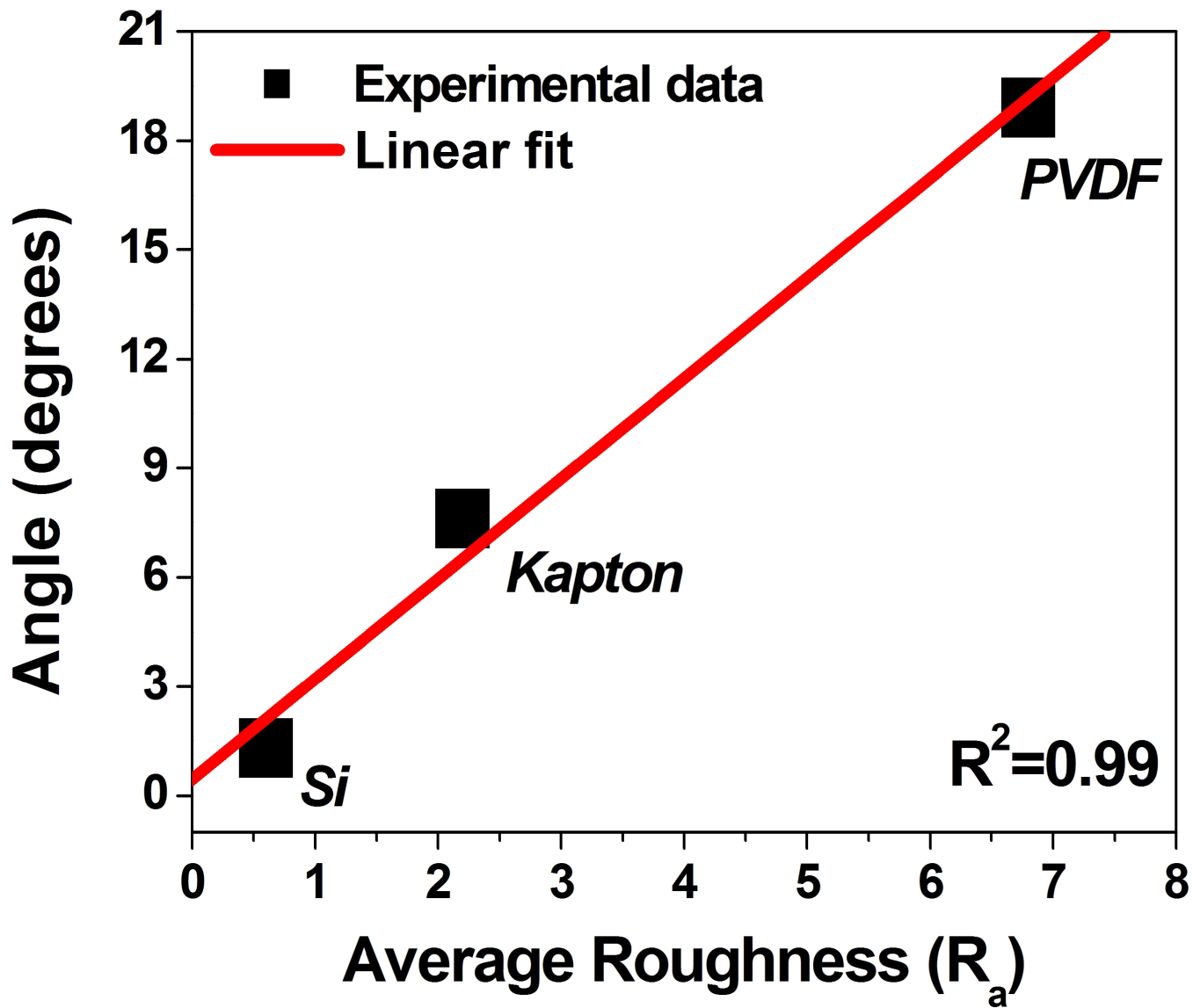
Hard axis

Easy axis

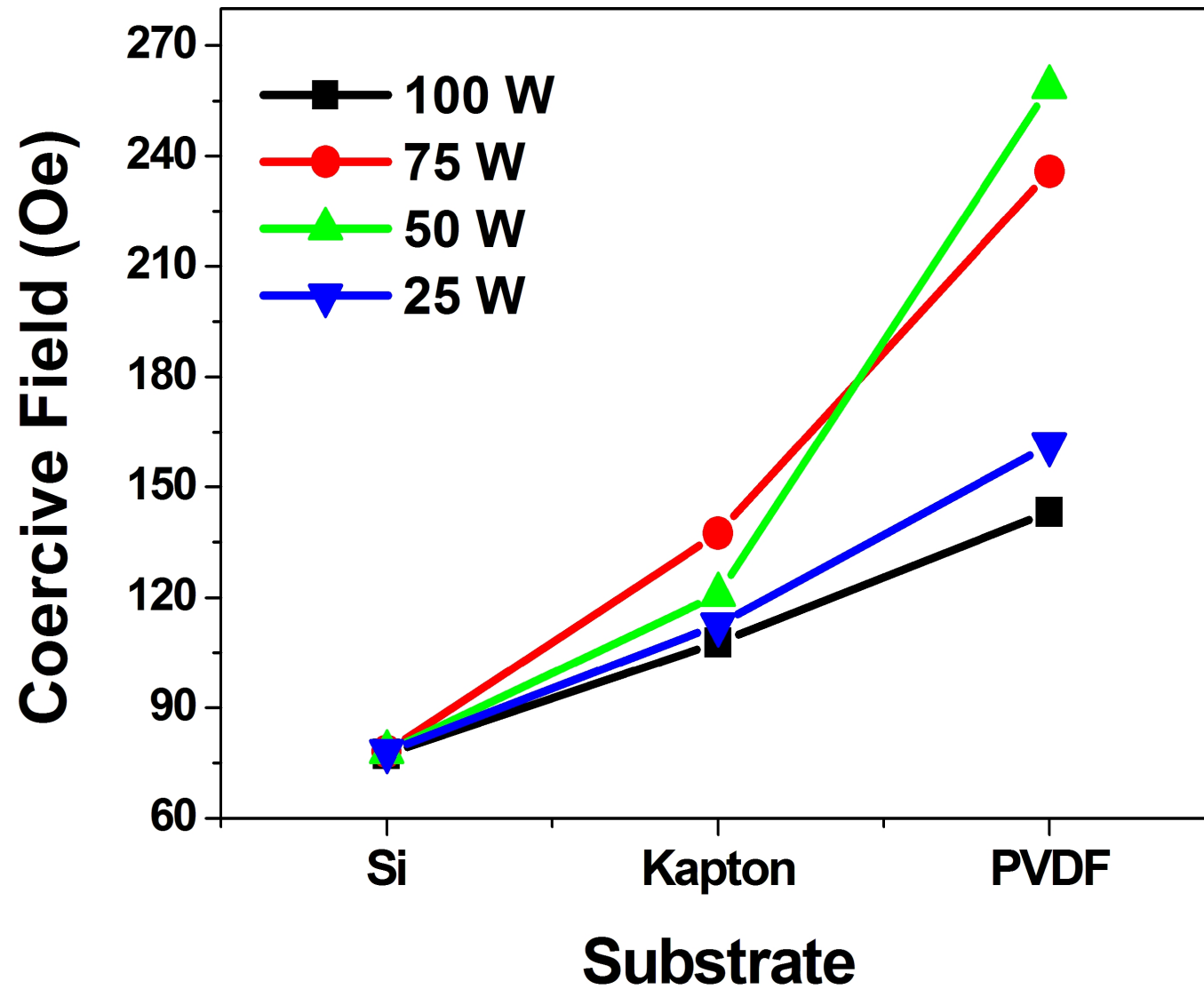


El. Magnet





Coercivity values for 15 nm NiFe - Easy axis



Magnetisation angle (deg.) 0

— Uniaxial Anisotropy Fit

● Computed Roughness

