



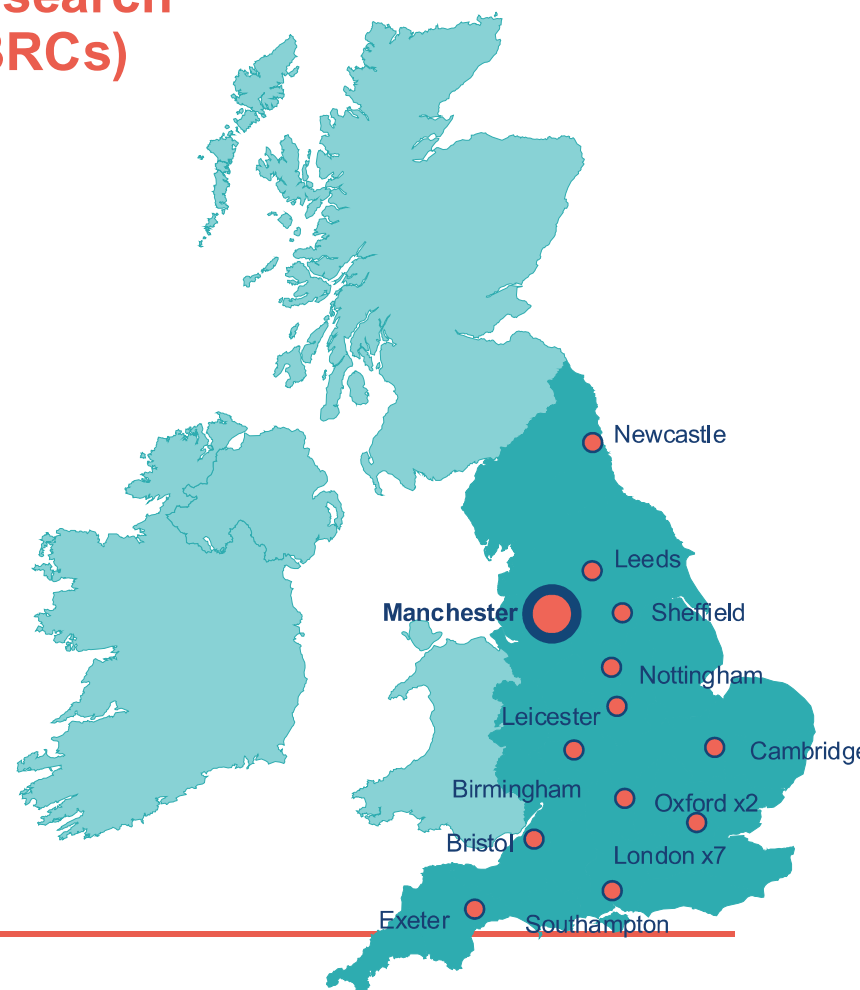
# NIHR | Manchester Biomedical Research Centre

Red Roses Meeting  
Professor Anne Barton, Director  
19<sup>th</sup> Nov 2025



## National Institute of Health and Care Research (NIHR) Biomedical Research Centres (BRCs)

- Collaborations between Universities and NHS Trusts as leading **centres of excellence in experimental medicine**
- NIHR has awarded nearly £790 million to 20 NIHR BRCs across England (2022-28).
- More than doubled the size (£28.5m > **£65m**), largest BRC outside of the South-East of England
- **Wider geography and higher number of Themes** funded
- Strong emphasis on **EDI and Inclusive Research, working with communities with highest need**
- Translating scientific breakthroughs into new treatments, diagnostics and medical technologies





## NIHR Manchester BRCs



**Greater Manchester  
Mental Health**

NHS Foundation Trust



**The Christie**

NHS Foundation Trust



**Blackpool Teaching  
Hospitals**

NHS Foundation Trust



The University of Manchester



**Manchester University**

NHS Foundation Trust



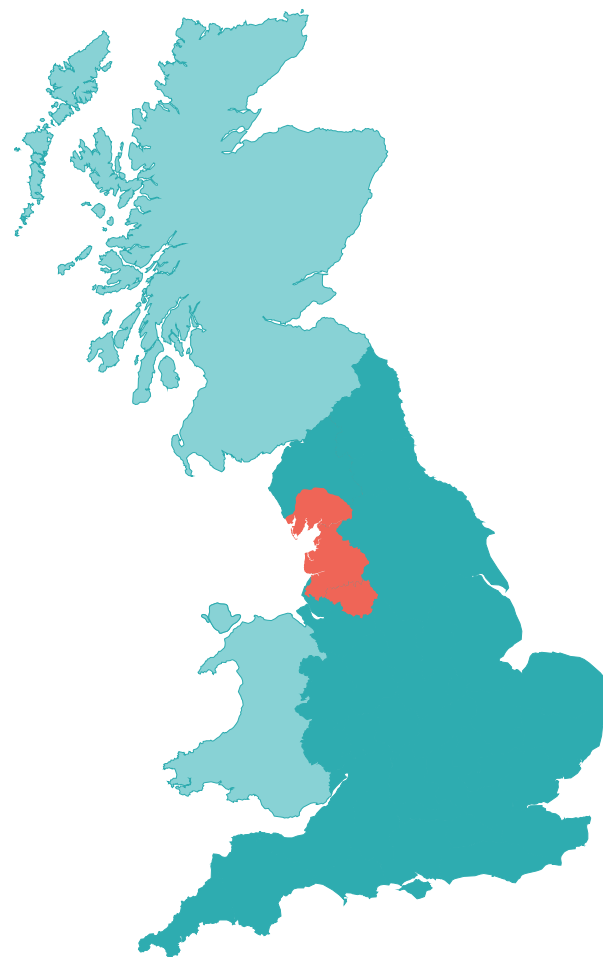
**Northern Care Alliance**

NHS Foundation Trust



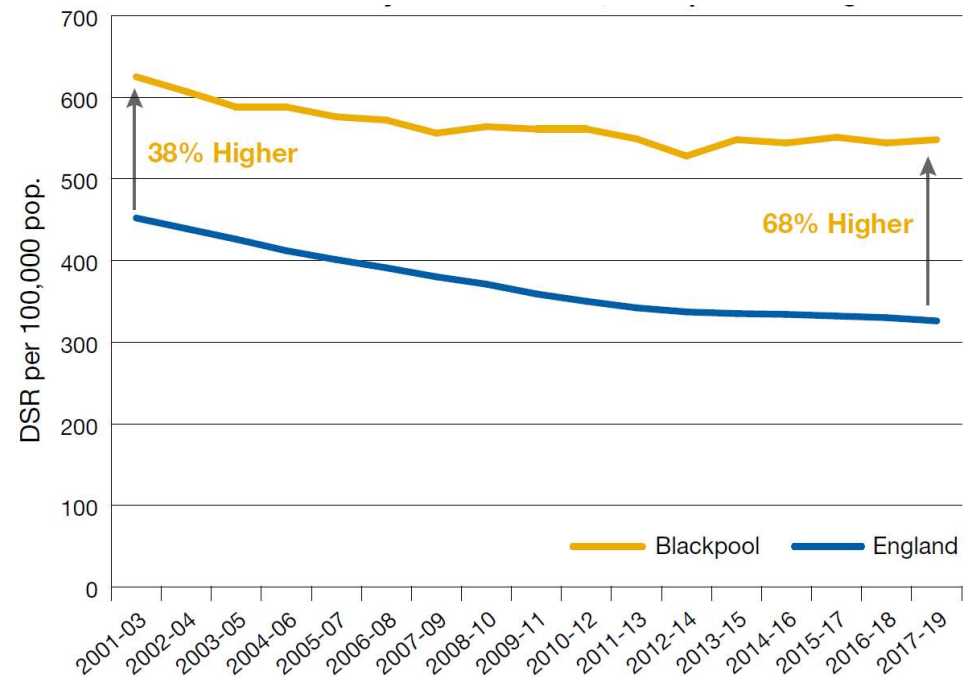
**Lancashire Teaching  
Hospitals**

NHS Foundation Trust



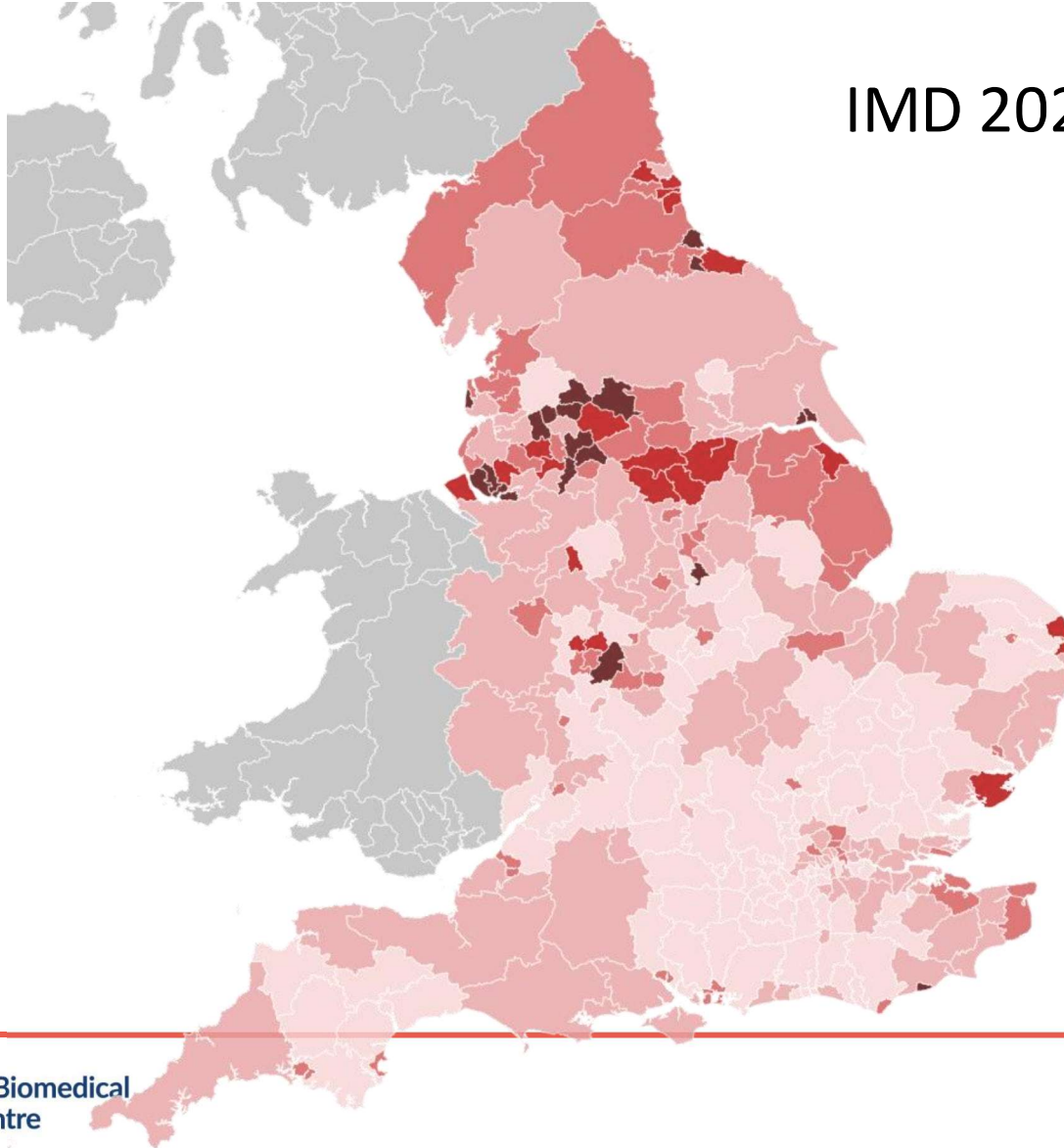
## Widening Gap in Premature Mortality (<75 yrs old) from all causes in Blackpool vs England

- High burden of poor health outcomes
- Historically low research infrastructure investment



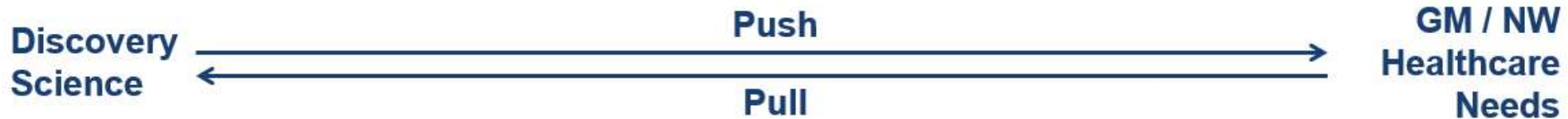
Slide from Gavin Galasko, BTH

IMD 2025

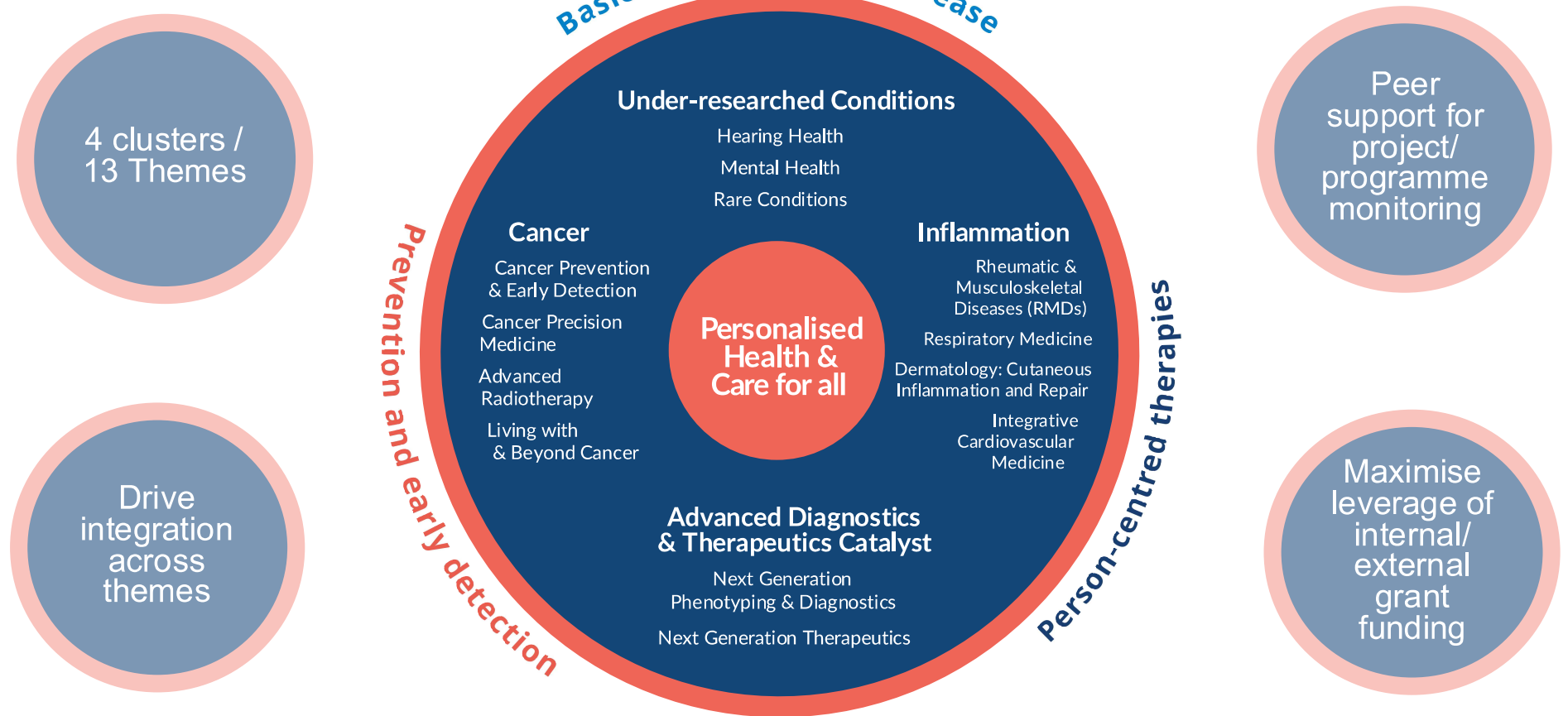


# Personalised Health & Care for all

## Greater Manchester NIHR Infrastructure Oversight Board Health Innovation Manchester



## Manchester BRC Structure



## Vision: to drive personalised health and care for all



### **Embed**

Early translational research in Greater Manchester, Lancashire and South Cumbria.



### **Build**

A unique national powerhouse for innovation by combining the world-leading discovery and translational capabilities with a committed, diverse and inclusive workforce.



### **Accelerate**

At scale, the impact of our research to achieve measurable improvements in health and wellbeing across all sections of society.



## Research Inclusion

*Inclusive translational research takes deliberate action to meet the health research needs of different people, to address barriers to inclusion and to promote environments where everyone feels included, respected and valued.”*

(Definition co-created with researchers, the Black Asian & Minority Ethnic Research Advisory Group & Vocal)



## Progress in Lancashire Teaching Hospitals NHS Foundation Trust (LTHTr)

### **Collaborative studies:**

- MFT Capital funds (£16k) allocated to LTHTr
- STARR study (chronic cough); RADicA (Rapid Access Diagnostics for Asthma).
- CRIBS - Chronic Radiation Induced Bowel Toxicity Study
- TARGET National (Tumour Characterisation to Guide Experimental Targeted Therapy)

### **Building research capacity:**

CORSlcA (Core Outcome measures in Squamous Intra-epithelial precursor lesions of the Anus) – Co-supervision of Fellow Dr David Finch

### **Active participation in**

- NW CRF Alliance, UK CRF consortium
- NIHR BioResource
- Members of Boards and Teams – PPIE, Governance
- Cancer PED theme co-leadership.

## Progress in Blackpool Teaching Hospitals NHS Foundation Trust

### Activity

- Team – BRC funded nurse, Medical Statistician, Data Manager, External Liaison Officer
- PhD studentships x 3
- Projects ongoing in Integrative Cardiovascular Medicine and Cancer PED
- Local Grants awarded to integrate new PIs in cardiology / cardiac surgery, cancer, respiratory

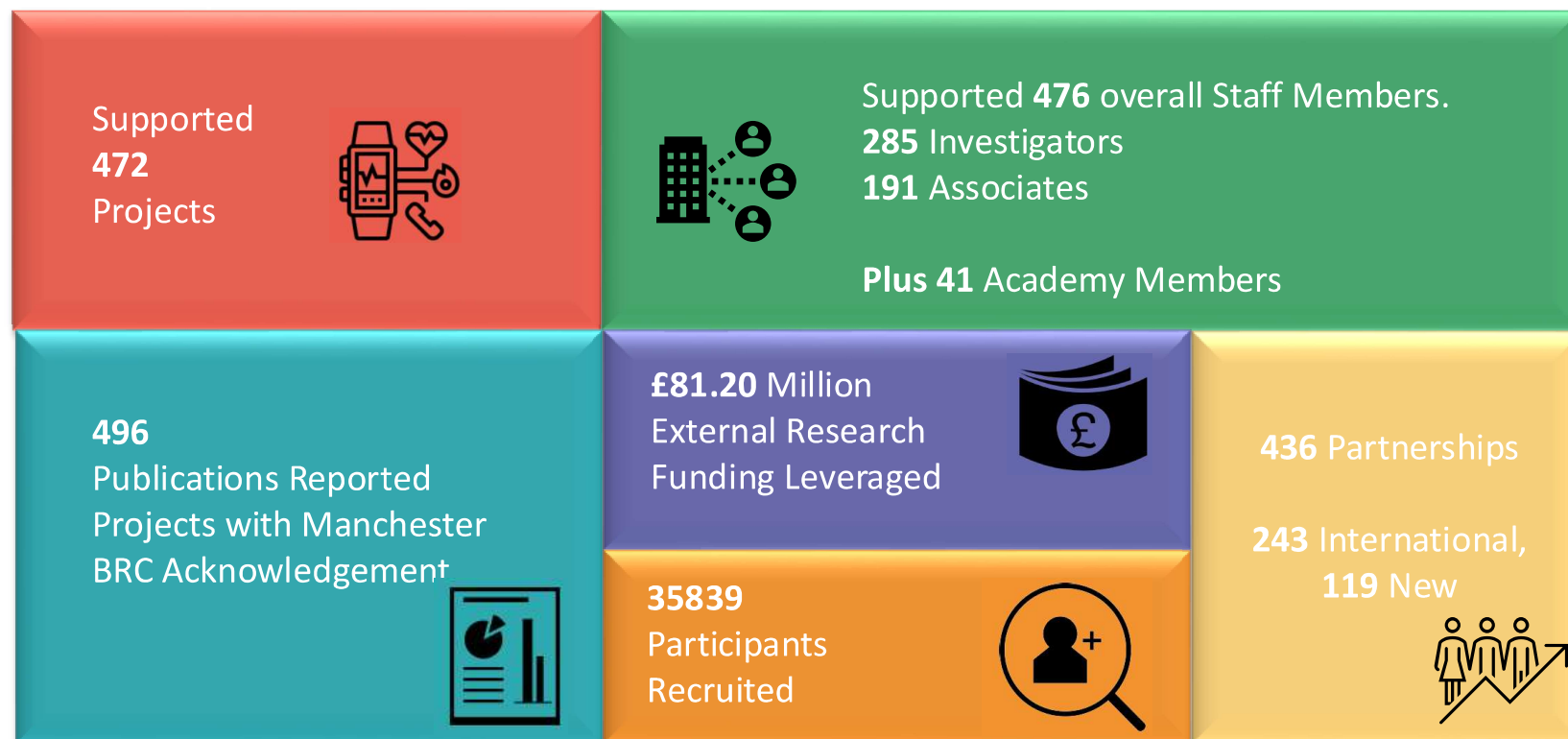
### Embedded into national infrastructure

- Cardiovascular Translational Research Collaborative
- Health Informatics Collaborative
- IMID BioResource

### New income leveraged:

- British Heart Foundation
- Innovate UK
- Coproduction with the Health Determinants Research Collaboration (HDRC, £5million) hosted by Blackpool Council to extend our reach across the communities we serve focusing on levelling up.

# Summary of Manchester BRC Metrics 2024/25



# BRC: Top Achievements 2024-25

## Innovation

- Urine-based test for human papilloma virus for cervical cancer screening; cost-effective, 6-fold lower carbon footprint, more acceptable to LGBTQ+ and minority ethnic groups.
- Point-of-care test for genotyping CYP2C19; recommended by NICE for clopidogrel prescription following Stroke.

## Investment in People

- At all stages of training:
- 20 placements for healthcare professionals.
  - 25 new PhD studentships Apr24-Mar25.
  - 20 externally-funded Fellowships.
  - 6 new consultants with protected research time via MBRC CRIS scheme.

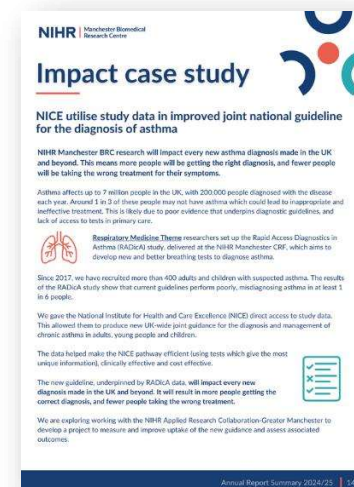
## Impact

- NICE guidelines for asthma,
- BMJ guidelines for therapeutic drug monitoring
- Global guidelines for Candidiasis
- Proof-of concept for repurposing baricitinib for Myositis.
- Low-dose morphine for idiopathic pulmonary fibrosis-related cough.
- First in Europe CAR-T studies in myositis and SLE.

# Annual Report Summary 2024/25

Developed by the Manchester BRC Communications Team to demonstrate our top achievements and key impacts, for our partners and stakeholders.

- Lay language.
- Available as PDF as full HTML text on website for accessibility.
- Introduction video including key statistics.
- Shared across different channels, including:
  - Website ([Our Impact](#) page, [Annual Report Summary 24/25](#) page) – > 200 views
  - Social media (LinkedIn, X, YouTube) –excellent engagement rate
  - Partner communications (social media, newsletters, intranet)



---

## NIHR feedback

- Green RAG rating
  - On track
- Meeting objectives
- Minor queries only – responses returned



## Commercialisation

- Making commercialisation a core element within the BRC's strategy
- Enhance IP education and capacity building
  - On-line training available
  - Could your discoveries be commercialised?
  - Liaise with IP experts
- Enhance industry collaborations and co-funded projects





# Current opportunities



# Core Funding Opportunities

## Strategic Funding

- Identify new research opportunities
- Explore Innovative intersections between traditional disciplines
- Integrate knowledge from multiple fields
- Encourage diverse research methodologies

## Capacity Building

- CRIS scheme for capacity building opportunities
- Healthcare Professional Placement opportunities for career development
- Training Seminars for skill enhancement

## Innovation

- Funding available for entrepreneurial projects
- Funding and support available for commercialisation

Strategic Projects Manager:  
Lynsey Priest  
[Lynsey.Priest@mft.nhs.uk](mailto:Lynsey.Priest@mft.nhs.uk)

# Healthcare Professional Placement Scheme

- Nurses, Midwives, Allied Health Professionals, and other healthcare professionals.
- Short, flexible 12-week placements (or equivalent days);
- Backfill funding for employers.
- Provides opportunity to:
  - Gain first-hand experience of how clinical research is undertaken in the NHS.
  - Collaborate with senior clinical academics in delivering a short research project.
  - Enhance knowledge of experimental medicine, in a clinical research context.
  - Explore opportunities for further engagement in clinical research.
- **Further information:** website [www.manchesterbrc.nihr.ac.uk/training/](http://www.manchesterbrc.nihr.ac.uk/training/)  
Lisa Murray, BRC Education & Training Manager at [lisa.murray@mft.nhs.uk](mailto:lisa.murray@mft.nhs.uk)



**Apply by Tuesday 16 December 2025**

Calling Nurses, Midwives, Allied Health Professionals (AHPs), and other healthcare professionals working in the NHS who would like to develop hands-on clinical research skills.

# Health inequalities call

- Funding for £5- 50K per project over 12 months
- Projects that aim to reduce health inequality
  - Evidence of PPI/E
  - Use of inclusive research methods to inform/deliver work
  - Consideration of staff EDI
- Lynsey Priest, Strategic Projects Manager: [lynsey.priest@mft.nhs.uk](mailto:lynsey.priest@mft.nhs.uk)



**Catalysing Inclusive Research to Tackle Health Inequities**

**Apply by Friday 6 February 2026**

Research inclusion is an area of focus for the National Institute of Health and Care Research (NIHR) and a key priority for the NIHR Manchester Biomedical Research Centre (BRC).

The NIHR defines research inclusion as the intentional integration of equality, diversity, and inclusion (EDI) across all aspects of research to reduce health and care inequalities and ensure research benefits everyone in society.

# Preparing for BRC3

- Stage 1 call expected late 2026
  - No dates available yet from NIHR
  - No information on call content
- Research theme questionnaire (RTQ) submissions invited
  - New and existing themes / partner Trusts
  - Judged on scientific merit
  - Deadline 16<sup>th</sup> January
  - UoM strategic team will analyse metrics for proposed theme members
  - Review panel convened for March 2026
- Scientific advisory board meeting being planned for June 2026 – to offer advice on proposed themes/structure

## Thank you

Manchester BRC's **vision** is to drive **personalised health** and **care for all**

- Build translational research capacity across Greater Manchester, Lancashire and South Cumbria
- Leverage new income (academic/industry) and inward investment
- Specific action to better understand health inequities and using this to bring our research to people in place

<https://www.manchesterbrc.nihr.ac.uk>



Follow us  
[@ManchesterBRC](#)



[Link in with us:](#)  
NIHR Manchester  
Biomedical Research  
Centre



Watch  
our [YouTube](#)

[ManchesterBRC@mft.nhs.uk](mailto:ManchesterBRC@mft.nhs.uk) – sign up for access to newsletters/opportunities